

# DISCHARGE COIL

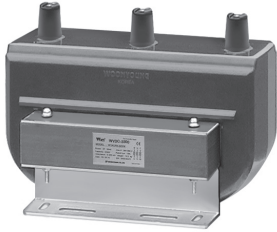
고압 진상콘덴서용 방전코일

CE RoHS

## ● Epoxy Mold Type

고압 진상콘덴서용 방전코일은 콘덴서를 회로로부터 개방 하였을 때 콘덴서에 남아 있는 잔류전하로 인해 빠른시간 자동제어 재투입 시 발생하는 과도전압 제어와 사람등의 접촉에 대한 안전확보를 위해 단시간에 방전시킬 목적으로 사용하기 위한 콘덴서용 방전코일입니다.

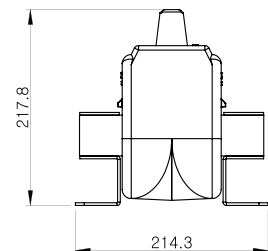
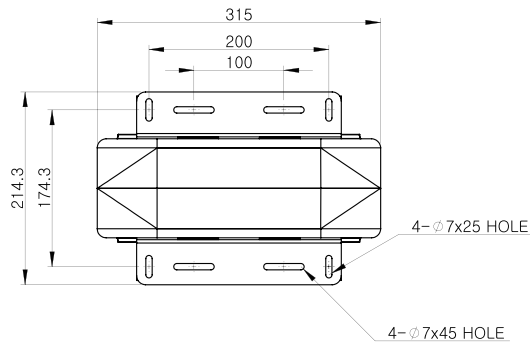
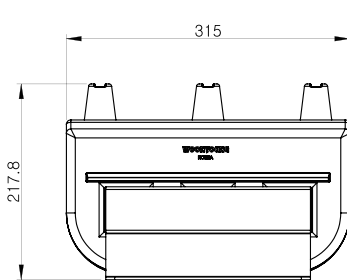
The discharge coil for the high voltage static capacitor is the discharge coil for the capacitor used for the purpose of the short-term discharge to control the overvoltage generated from the fast automatic control re-input due to the residual charge remaining in the condenser when opening the condenser from the circuit and to secure the safety on the human contact.



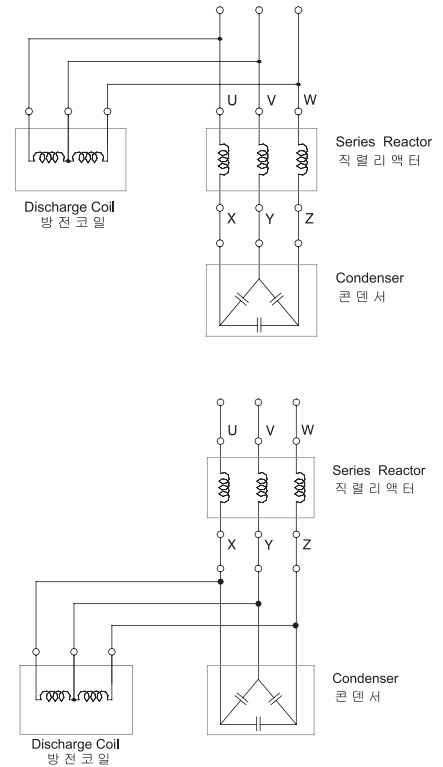
## ● Specifications

MODEL	WYDC-3300	WYDC-6600
Rated voltage	3,3kV	6,6kV
Maximum voltage	3,45kV	7,2kV
Installation location	Indoor use (Epoxy Mold Type)	
Frequency	50/60Hz	
Over voltage Rating	1,1 times/less than 12h 1,2 times/less than 5min 1,3 times/less than 1min	
Operating temperature	-20 ~ +50℃	
Discharger condition	With in 5 Sec. , less than 50V	
Insulation Resistance	DC500V Megger >500MΩ	
Dielectric withstand	3300V : 10kV	6600V : 16kV

## ● Dimension



## ● Connection Diagram



노이즈컷트랜스

REACTOR 리액터

트랜스포머 TRANS.

동동용필터 A H F

수용용필터 P H F

마이크로서지필터 M S F

사인웨이브필터 S W F

정상고조파필터 Z H F