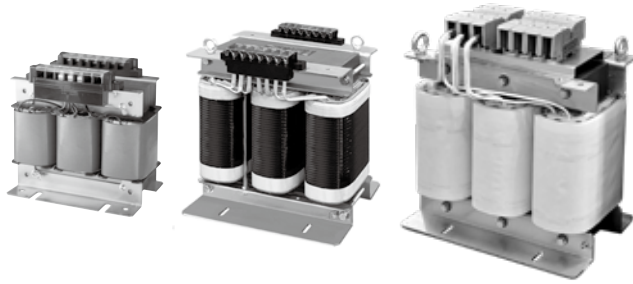


TRANSFORMER

WY3P-AU Series (삼상단권)



삼상 단권형으로 입력 AC 380V, 440V 출력 AC 220V로 복권형에 비해 1, 2차 구분없이 1개의 권선에서 Tap을 인출한 방식으로 결선은 Y 결선으로 되어있으며 단자대(Terminal Block)등으로 제작 되었습니다.

This transformer inputs is AC 380V, 440V and output is AC220V as three phase auto transformer Y connection system. it became tapped input and output from same single winding. it has terminal block for easy wiring work.

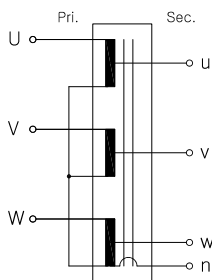
•200VA~10KVA Insulation Class B
•15KVA~300KVA Insulation Class H

Specifications

MODEL NO.	TYPE	SPECIFICATIONS		VA	DIMENSIONS (mm)										WEIGHT (kg)
		PRI.(V)	SEC.(V)		W	H	D	b	d	e	Ø2	M		Type	
• 3P380V · 440V Line → 220V Line Single winding Series(단권형)															
WY3P-200AU	W3PT	N	N-220-380-440	200	135	132	86	102	65	10	5.5 x 10	M4	M4	A	2.60
WY3P-300AU				300	140	130	100	103	60	10	5.5 x 15	M4	M4		5.76
WY3P-500AU				500	140	130	105	104	66	10	5.5 x 10	M4	M4		7.20
WY3P-1KAU				1K	190	180	105	130	90	10	5 x 15	M4	M4		8.00
WY3P-2KAU				2K	195	180	126	130	99	10	5 x 15	M4	M4		13.00
WY3P-3KAU				3K	240	210	145	120	115	10	10 x 30	M4	M4		19.20
WY3P-5KAU				5K	275	250	175	120	130	10	10 x 20	M4	M4		32.00
WY3P-7.5KAU				7.5K	275	250	175	120	130	10	10 x 20	M4	M4		36.00
WY3P-10KAU				10K	330	290	190	180	160	10	10 x 20	M4	M4		46.00
WY3P-15KAU				W3PT	N	N-220-380-440	15K	330	290	215	180	185	10		10 x 20
WY3P-20KAU	20K	375	319.5				236	180	208	16	10 x 20	M4	M4	77.00	
WY3P-30KAU	30K	390	330				230	180	205	16	12 x 25	M6	M6	92.00	
WY3P-40KAU	40K	430	390				260	205	195	20	13 x 40	M8	M8	101.50	
WY3P-50KAU	50K	450	450				330	225	210	20	10 x 40	M8	M8	110.00	
WY3P-75KAU	75K	460	549				276	240	210	-	13 x 27	M8	M10	137.00	
WY3P-100KAU	100K	483	548				296	240	226	-	13 x 27	M8	M10	192.00	
WY3P-150KAU	150K	545	543				306	340	236	-	13	M8	M8	272.00	
WY3P-200KAU	200K	650	700				400	420	220	-	16	-	-	336.00	
WY3P-300KAU	300K	710	800				500	500	270	-	16	-	-	530.00	

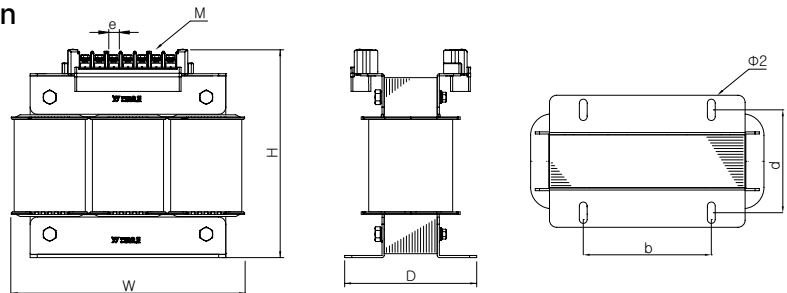
※ 3KVA 이상 "I" Bolt 부착 (Attach an "I" bolt for 3KVA or larger)

Circuit Diagram

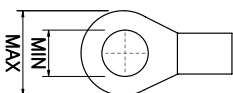


Dimension

• A Type

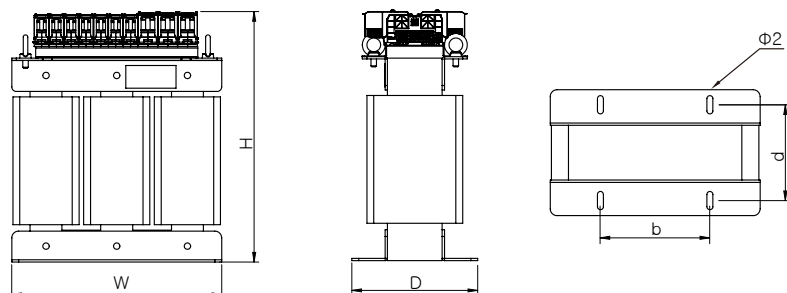


Terminal



100VA ~ 10kVA	Max 9, Min 4
15 ~ 30kVA	Max 15, Min 6
40 ~ 50kVA	Max 19, Min 8
75 ~ 100kVA	M8 Max 28, Min 8
	M10 Max 39, Min 10
150kVA	Max 19, Min 8

• B Type



트랜스포머
REACTOR
무정전압 레이어
전력조정기
스위칭파워
노이즈 필터
하모닉 필터
서지보호기
보호계전기
누전경보기
영상변류기
판넬메타
계기용변성기
선트팬