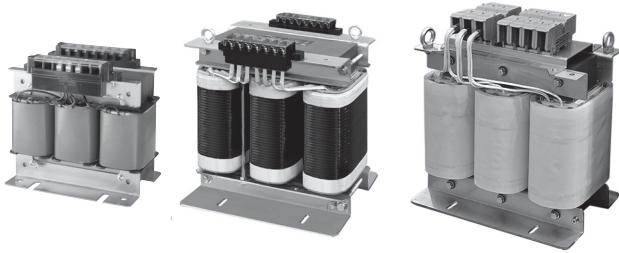


# TRANSFORMER

## WY3P-AU Series (삼상단권)





\* 위 제품은 1차, 2차 단일 TAP 기준 제작시  
이미지입니다. 다수 TAP 적용시 형상이 변경될수  
있습니다.(터미널 블록 고정식 단자대 적용)

삼상 단권형으로 입력 AC 380V, 440V 출력 AC 220V로 복권형에 비해  
1, 2차 구분없이 1개의 권선에서 Tap을 인출한 방식으로 결선은 Y 결선으  
로 되어있으며 단자대(Terminal Block)등으로 제작 되었습니다.

This transformer inputs is AC 380V, 440V and output is  
AC220V as three phase auto transformer Y connection  
system. it became tapped input and output from same single  
winding. it has terminal block for easy wiring work.

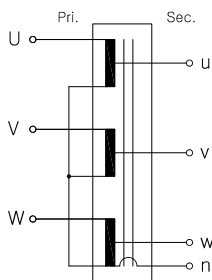
### Specifications

·200VA~10KVA Insulation Class B  
·15KVA~300KVA Insulation Class H

MODEL NO.	TYPE	SPECIFICATIONS		VA	DIMENSIONS (mm)									WEIGHT (kg)	
		PRI.(V)	SEC.(V)		W	H	D	b	d	e	Ø2	M			Type
												Pri.	Sec.		
• 3P380V · 440V Line → 220V Line Single winding Series(단권형)															
WY3P-200AU	W3PT		N-220-380-440	200	135	132	86	102	65	10	5.5 x 10	M4	M4	A	2.60
WY3P-300AU				300	140	130	100	103	60	10	5.5 x 15	M4	M4		5.76
WY3P-500AU				500	140	130	105	104	66	10	5.5 x 10	M4	M4		7.20
WY3P-1KAU				1K	190	180	105	130	85	10	5 x 15	M4	M4		8.00
WY3P-2KAU				2K	195	180	126	130	99	10	5 x 15	M4	M4		13.00
WY3P-3KAU				3K	240	210	145	120	115	10	10 x 30	M4	M4		19.20
WY3P-5KAU				5K	275	250	175	120	130	10	10 x 20	M4	M4		32.00
WY3P-7.5KAU				7.5K	275	250	175	120	130	10	10 x 20	M4	M4		36.00
WY3P-10KAU				10K	330	290	190	180	160	10	10 x 20	M4	M4		46.00
WY3P-15KAU	W3PT		N-220-380-440	15K	330	290	215	180	185	10	10 x 20	M4	M4	A	59.00
WY3P-20KAU				20K	375	319.5	236	180	208	16	10 x 20	M4	M4		77.00
WY3P-30KAU				30K	390	330	230	180	205	16	12 x 25	M6	M6		92.00
WY3P-40KAU				40K	430	390	260	205	195	20	13 x 40	M8	M8		126.00
WY3P-50KAU				50K	450	450	330	225	210	20	10 x 40	M8	M8		147.00
WY3P-75KAU				75K	460	549	276	240	210	-	13 x 27	M8	M10	B	137.00
WY3P-100KAU				100K	483	548	296	240	226	-	13 x 27	M8	M10		192.00
WY3P-150KAU				150K	545	543	306	340	236	-	13	M8	M8	A	272.00
WY3P-200KAU				200K	650	700	400	420	220	-	16	-	-		336.00
WY3P-300KAU	300K	710	800	500	500	270	-	16	-	-	530.00				

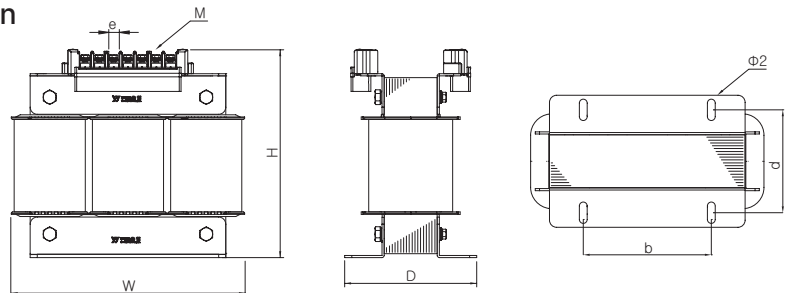
\* 3KVA 이상 "I" Bolt 부착 (Attach an "I" bolt for 3KVA or larger)

### Circuit Diagram

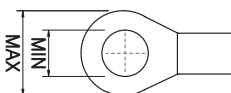


### Dimension

#### · A Type



### Terminal



100VA ~ 10kVA	Max 9, Min 4
15 ~ 30kVA	Max 15, Min 6
40 ~ 50kVA	Max 19, Min 8
75 ~ 100kVA	M8 Max 28, Min 8 M10 Max 39, Min 10
150kVA	Max 19, Min 8

#### · B Type

