

NOISE FILTER

N Series 3Ø 250V 보급형 General Type



● Features

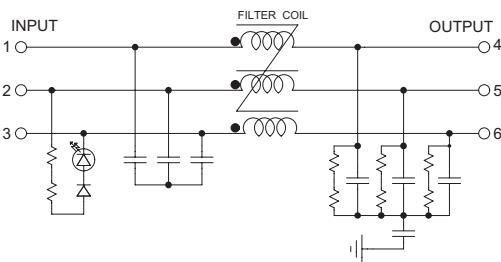
- Wide Band : High Attenuation
- Band Width : 150KHz ~ 30MHz
- RoHS Compliant
- Inverter Output Type : Model Type"C"
(WYNFT40T2C)

● Specifications

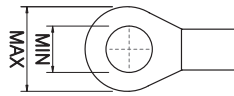
| ITEM | MODEL | SYMBOL | WYNFT40T2A WYNFT40T2C | WYNFT50T2A WYNFT50T2C | WYNFT60T2A WYNFT60T2C | WYNFT80T2A WYNFT80T2C | WYNFT100T2A WYNFT100T2C | WYNFT120T2A WYNFT120T2C | WYNFT150T2A WYNFT150T2C | WYNFT200T2A WYNFT200T2C | WYNFT250T2A WYNFT250T2C | |
|-----------------------|--------------|--------|---|--------------------------|--------------------------|--------------------------|----------------------------|----------------------------|----------------------------|----------------------------|----------------------------|--|
| Rated Voltage | V | | 250 | | | | | | | | | |
| Rated Current | A | | 40A | 50A | 60A | 80A | 100A | 120A | 150A | 200A | 250A | |
| SCCR (T2A-TYPE) | KA | | 50 | | | | | | | | | |
| SCCR (T2C-TYPE) | | | 5 | | | | 10 | | | | | |
| Frequency | Hz | | 50 / 60 | | | | | | | | | |
| Dielectric Withstand | V | | 2500VAC for 1 minute (Line - Case) | | | | | | | | | |
| Insulation Resistance | M Ω | | DC 100M Ω at the 500Vdc | | | | | | | | | |
| Leakage Current | mA | | ≤ 2.5 mA at the 250Vac | | | | | | ≤ 16 mA at the 250Vac | | | |
| Operating Temperature | $^{\circ}$ C | | -25 $^{\circ}$ C ~ +100 $^{\circ}$ C [Refer to Derating Curve TYPE - 2] | | | | | | | | | |
| Operating Humidity | RH | | 35 ~ 85%RH | | | | | | | | | |
| Weight | kg | | 1.2 | | 2.2 | | | | 5.0 | | | |

※ Derating Curve of page 519

● Circuit Diagram

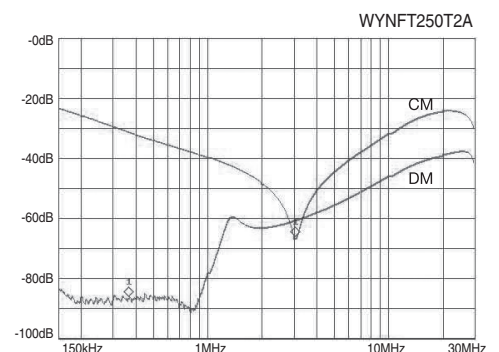
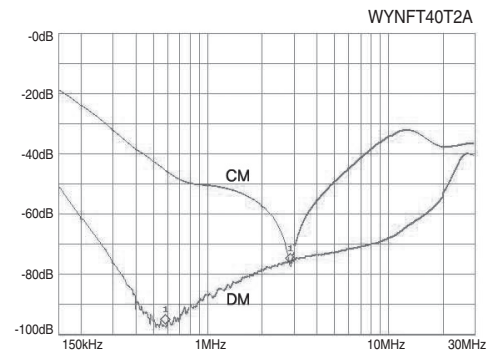


● Terminal

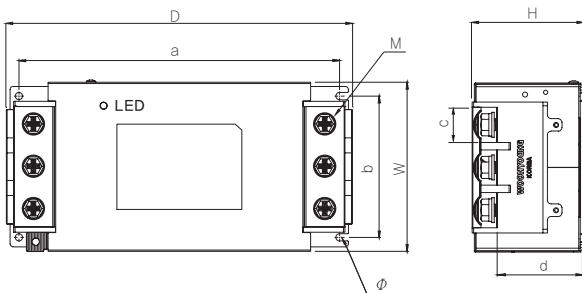


Max 16, Min 6 (40~50A)
Max 23, Min 8 (60~100A)
Max 28, Min 8 (120~250A)

● Characteristics



● Dimension



| MODEL | W | H | D | a | b | c | d | M | Ø |
|-------------------|-------|-------|-------|-------|-----|------|------|---|-----|
| WYNFT40 ~ 50T2A | 91 | 57.2 | 184 | 173.5 | 74 | 17 | 42.3 | 6 | 5 |
| WYNFT60 ~ 100T2A | 115 | 75 | 235.2 | 218 | 96 | 24 | 58 | 8 | 5 |
| WYNFT120 ~ 250T2A | 157.2 | 100.1 | 347.5 | 316 | 130 | 28.5 | 68.6 | 8 | 6.5 |

TRANS = NCT
 REACTOR
 리액터
 무정전압블레이
 TPR
 전압조정기
 스위칭파워
 SPS
 N/F
 노이즈 필터
 H/F
 하모닉 필터
 SPD
 서지보호기
 RELAY
 보호계전기
 ELD = GFR
 누전경보기
 ZCT
 영상변류기
 METER
 판넬메타
 CT = VT
 계기용변성기
 SHUNT = FAN
 셉트팬