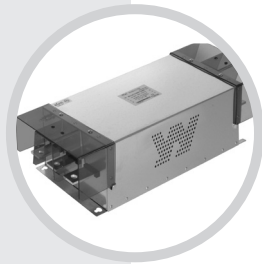
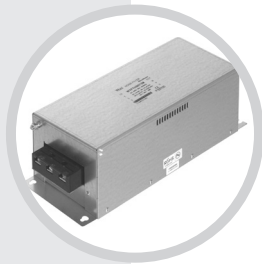


# 노이즈필터

Noise Filter

## 3Ø 고감쇄형(Multi-Stage Type)

- 3Ø 250V 5 ~ 1200A
- 3Ø 500V 5 ~ 1200A



# NOISE FILTER

## N Series 3Ø 250V 고감쇄형 Multi-Stage Type

### UL 인증



### ● Features

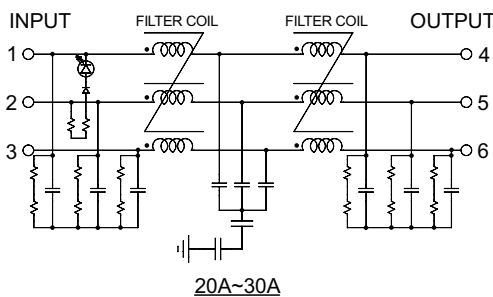
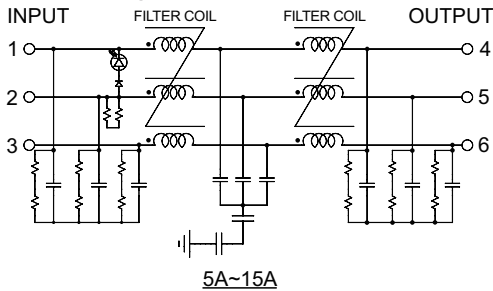
- Wide Band : High Attenuation
- Band Width : 150KHz ~ 30MHz
- RoHS Compliant
- Inverter Output Type : Model Type"C"  
(WYNFT05T2C)

### ● Specifications

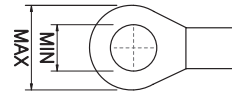
ITEM	MODEL	SYMBOL	WYNFT05T2M	WYNFT10T2M	WYNFT15T2M	WYNFT20T2M	WYNFT30T2M
Rated Voltage	V		250Vac				
Rated Current	A		5A	10A	15A	20A	30A
Frequency	Hz		50 / 60				
Dielectric Withstand	V		1500VAC or 2250VDC for 1 minute(Line-Case)				
Insulation Resistance	M.Ω		DC 100M.Ω at the 500Vdc				
Leakage Current	mA		≤2.5mA at the 250Vac				
Operating Temperature	°C		-25°C ~ +100°C [Refer to Derating Curve TYPE-2]				
Operating Humidity	RH		35 ~ 85%RH				
Weight	kg		1.2			2.2	

※ Derating Curve of page 519

### ● Circuit Diagram

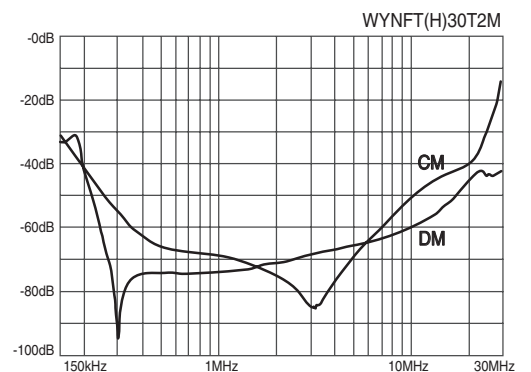
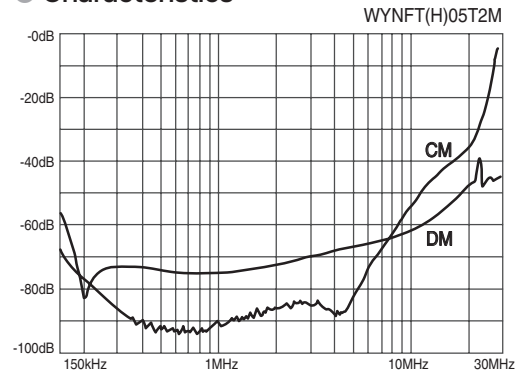


### ● Terminal

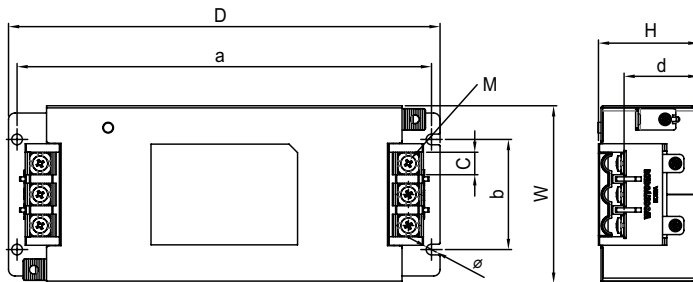


Max 10, Min 4 (5~15A)  
Max 12, Min 5 (20~30A)

### ● Characteristics



### ● Dimension



MODEL	W	H	D	a	b	c	d	M	Ø
WYNFT5 ~ 15T2M	83	47	202	194	51.5	10.5	35	4	5
WYNFT20 ~ 30T2M	95	50.3	242	232	60	13	35.5	5	5

# NOISE FILTER

## N Series 3Ø 250V 고감쇄형 Multi-Stage Type

### UL 인증



### ● Features

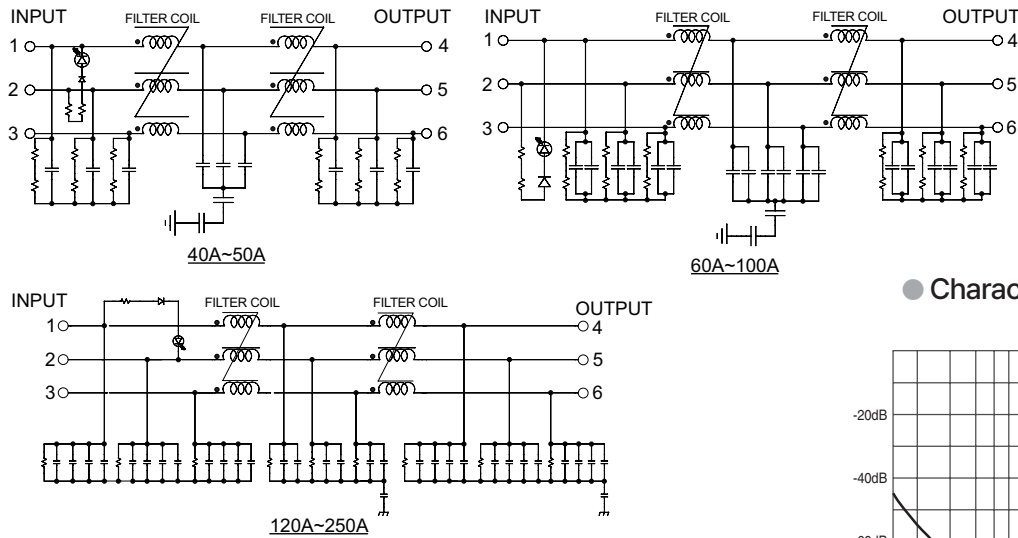
- Wide Band : High Attenuation
- Band Width : 150kHz ~ 30MHz
- RoHS Compliant
- Inverter Output Type : Model Type"C"  
(WYNFT40T2C)

### ● Specifications

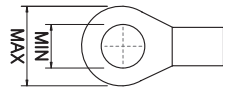
ITEM	MODEL	SYMBOL	WYNFT 40T2M	WYNFT 50T2M	WYNFT 60T2M	WYNFT 80T2M	WYNFT 100T2M	WYNFT 120T2M	WYNFT 150T2M	WYFNT 200T2M	WYNFT 250T2M
Rated Voltage	V		250								
Rated Current	A		40A	50A	60A	80A	100A	120A	150A	200A	250A
Frequency	Hz		50 / 60								
Dielectric Withstand	V		1500VAC or 2250VDC for 1 minute(Line-Case)								
Insulation Resistance	MΩ		DC 100MΩ at the 500Vdc								
Leakage Current	mA		≤2.5mA at the 250Vac						≤16mA at the 250Vac		
Operating Temperature	°C		-25°C ~ +100°C [Refer to Derating Curve TYPE - 2]								
Operating Humidity	RH		35 ~ 85%RH								
Weight	kg		2.2			3.5			4.5		

※ Derating Curve of page 519

### ● Circuit Diagram

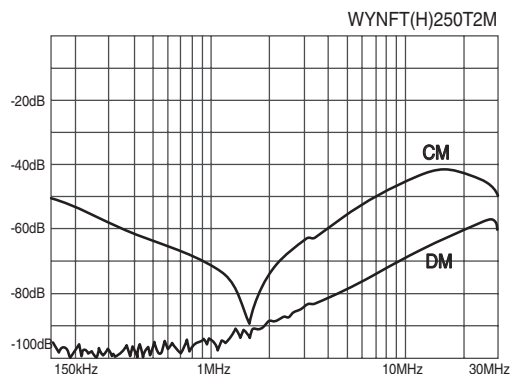
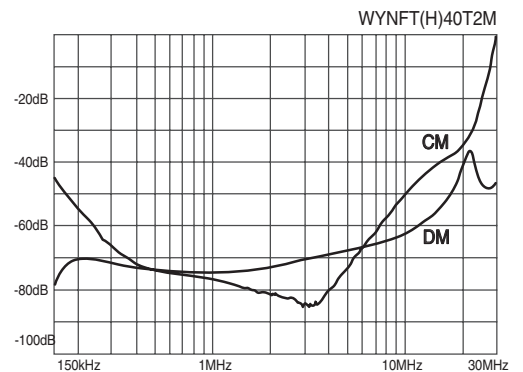


### ● Terminal

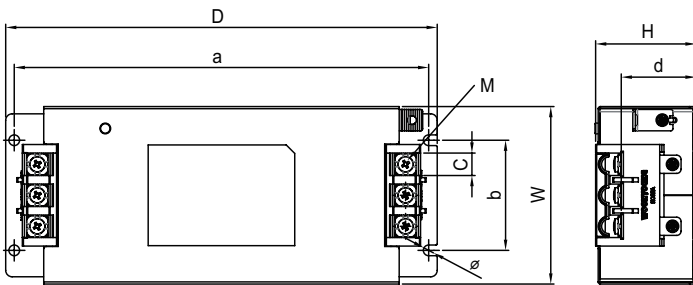


Max 16, Min 6 (40~50A)  
Max 23, Min 8 (60~100A)  
Max 28, Min 8 (120~250A)

### ● Characteristics



### ● Dimension



MODEL	W	H	D	a	b	c	d	M	Ø
WYNFT40 ~ 50T2M	109	61.2	295	284.5	74	17	46	6	5
WYNFT60 ~ 100T2M	137	76.9	380	368	96	24	59.7	8	5
WYNFT120 ~ 250T2M	171.6	151.6	445.4	416	140	28.5	120.1	8	6.5

TRANS = NCT 트랜스포머  
 REACTOR 리액터  
 SSR 무정전압블레이  
 TPR 전력조정기  
 SPS 스위칭파워  
 NF 필터 노이즈 필터  
 HF 하모닉 필터  
 SPD 서지보호기  
 RELAY 보호계전기  
 ELD = GFR 누전경보기  
 ZCT 영상변류기  
 METER 판넬메타  
 CT = VVT 계기용변성기  
 SHUNT = FAN 셉트팬



### ● Features

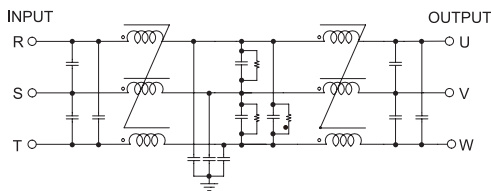
- High Attenuation
- High Voltage Pulse Noise
- 2 Stage Filter
- Band Width : 150KHz ~ 30MHz
- RoHS Compliant
- Inverter Output Type : Model Type"C"  
(WYFT05T2C)

### ● Specifications

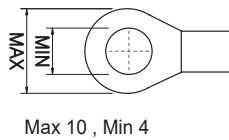
ITEM	MODEL	SYMBOL	WYFT05T2M	WYFT10T2M	WYFT15T2M	WYFT20T2M	WYFT30T2M
Rated Voltage	V		250				
Rated Current	A		5	10	15	20	30
Frequency	Hz		50 / 60				
Dielectric Withstand	V		1500VAC or 2250VDC for 1 minute(Line-Case)				
Insulation Resistance	MΩ		500				
Leakage Current	mA		27				
Operating Temperature	°C		-25°C ~ +100°C [Refer to Derating Curve TYPE-2]				
Operating Humidity	RH		35 ~ 85%RH				
Weight	kg		1.2		1.7		

※ Derating Curve of page 519

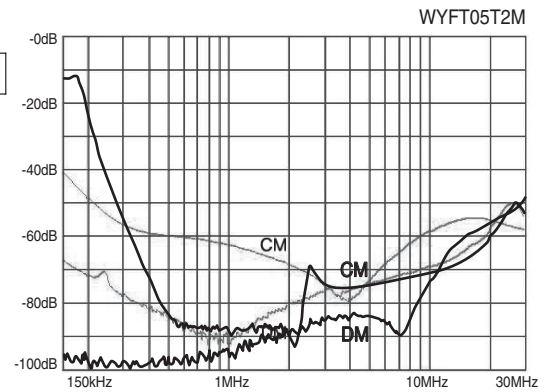
### ● Circuit Diagram



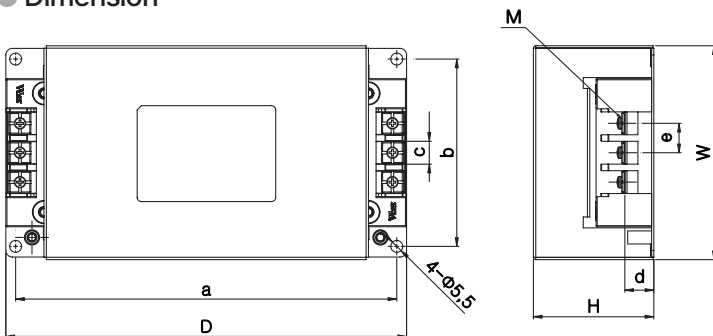
### ● Terminal



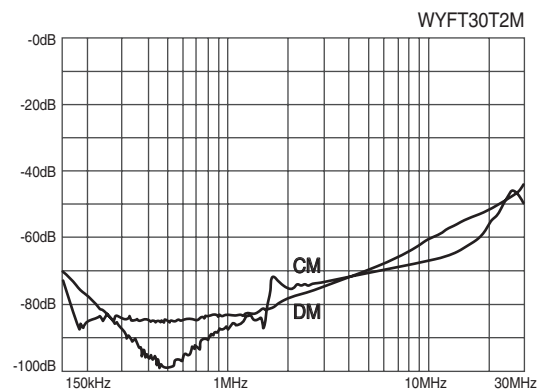
### ● Characteristics



### ● Dimension

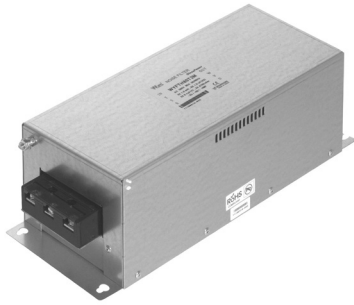


MODEL	W	H	D	a	b	c	d	e
WYFT050 ~ 15T2M	98	55	184	175	86	10.5	13	13.5
WYFT20 ~ 30T2M	116	75	234	219	98	10.5	14	13.5



# NOISE FILTER

## 3Ø 250V 고감쇄형 Multi-Stage Type



### ● Features

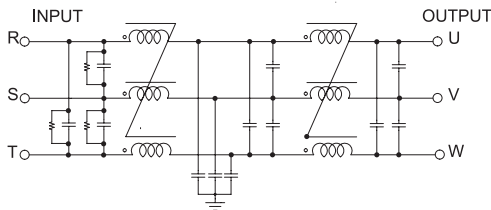
- High Attenuation
- High Voltage Pulse Noise
- 2 Stage Filter
- Band Width : 150KHz ~ 30MHz
- RoHS Compliant
- Inverter Output Type : Model Type"C"  
(WYFT40T2C)

### ● Specifications

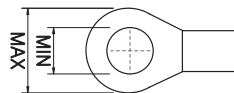
ITEM	MODEL	SYMBOL	WYF T40T2M	WYF T50T2M	WYF T60T2M	WYF T80T2M	WYF T100T2M	WYF T120T2M	WYF T150T2M	WYF T200T2M	WYF T250T2M	
Rated Voltage	V		250									
Rated Current	A		40	50	60	80	100	120	150	200	250	
Frequency	Hz		50 / 60									
Dielectric Withstand	V		1500VAC or 2250VDC for 1 minute(Line-Case)									
Insulation Resistance	MΩ		500									
Leakage Current	mA		27									
Operating Temperature	°C		-25°C ~ +100°C [Refer to Derating Curve TYPE-2]									
Operating Humidity	RH		35 ~ 85%RH									
Weight	kg		3.5			7.0			10.5		12.0	

※ Derating Curve of page 519

### ● Circuit Diagram

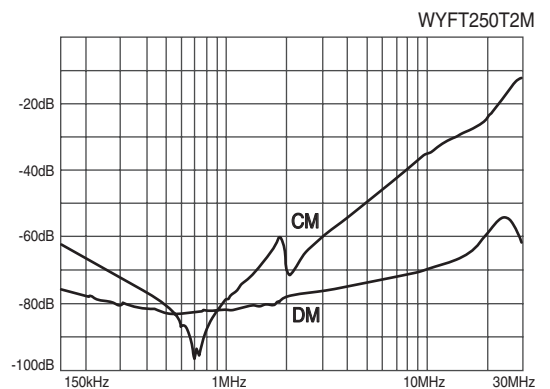
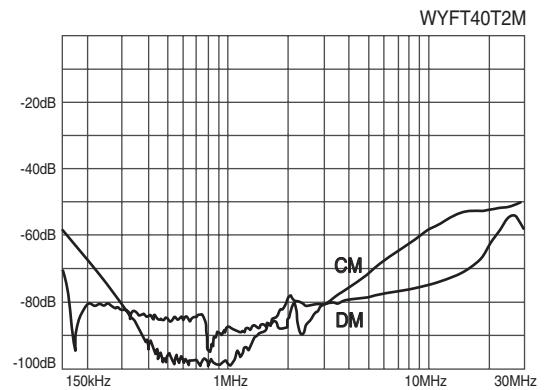


### ● Terminal

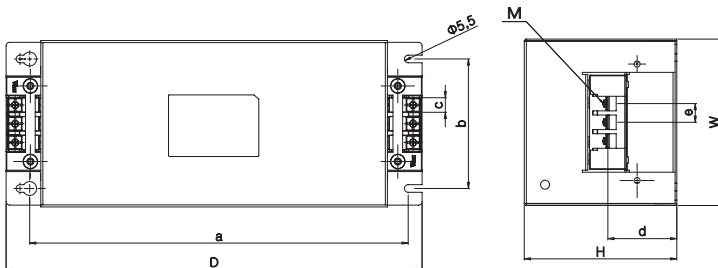


Max 10 , Min 4(40~50A)  
Max 14 , Min 6(60~100A)  
Max 22 , Min 8(120~150A)  
Max 24 , Min 8(200~250A)

### ● Characteristics

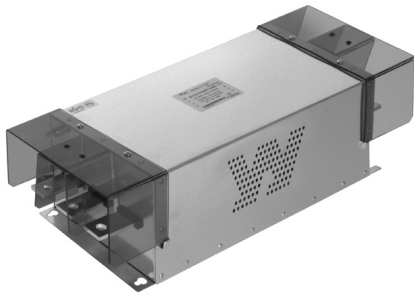


### ● Dimension



MODEL	W	H	D	a	b	c	d	e	M
WYFT40 ~ 50T2M	124	110	306	273	93	10.5	50	13.5	M4
WYFT60 ~ 100T2M	140	130	410	373	113	15	60	27.5	M6
WYFT120 ~ 150T2M	170	163	458	417	143	23	71	35	M8
WYFT200 ~ 250T2M	170	163	467	417	143	25	76	38.5	M8

TRANS = NCT 트랜스포머  
 REACTOR 리액터  
 SSSR 무정전압블레이  
 TPR 전력조정기  
 SMPSS 스위칭파워  
 NF 필터 노이즈 필터  
 HF 하모닉 필터  
 SPD 서지보호기  
 RELAY 보호계전기  
 ELD = GFR 누전경보기  
 ZCT 영상변류기  
 METER 판넬메타  
 CT = VVT 계기용변성기  
 SHUNT = FAN 션트팬



### ● Features

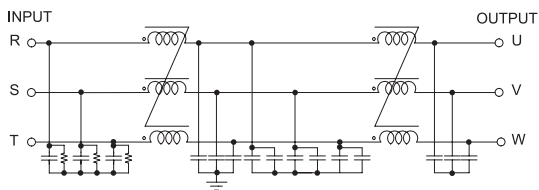
- High Attenuation
- High Voltage Pulse Noise
- 2 Stage Filter
- Band Width : 150KHz ~ 30MHz
- RoHS Compliant
- Inverter Output Type : Model Type "C"  
(WYFT300T2C)

### ● Specifications

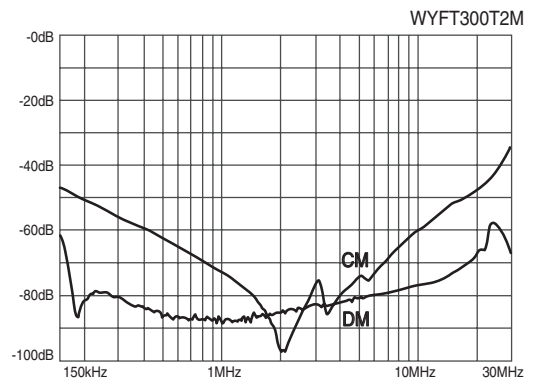
ITEM	MODEL	SYMBOL	WYFT300T2M	WYFT400T2M
Rated Voltage	V		250	
Rated Current	A		300	400
Frequency	Hz		50 / 60	
Dielectric Withstand	V		1500VAC or 2250VDC for 1 minute(Line-Case)	
Insulation Resistance	MΩ		500	
Leakage Current	mA		27	
Operating Temperature	°C		-25°C ~ +100°C [Refer to Derating Curve TYPE-2]	
Operating Humidity	RH		35 ~ 85%RH	
Weight	kg		12.5	15.5

※ Derating Curve of page 519

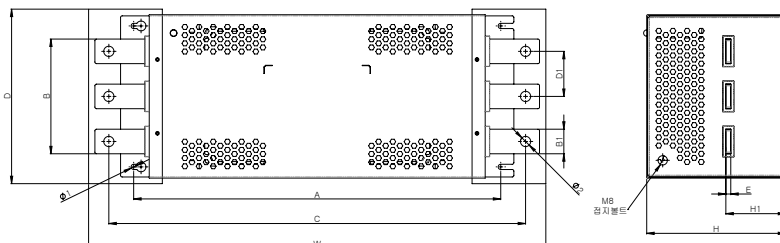
### ● Circuit Diagram



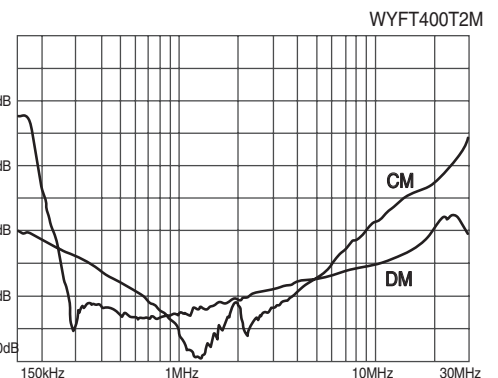
### ● Characteristics



### ● Dimension

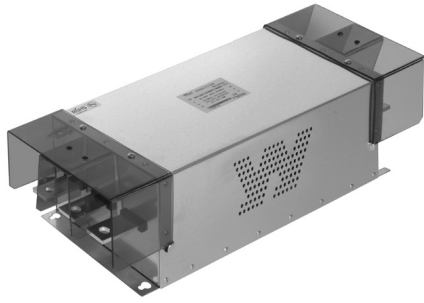


MODEL	W	H	D	A	B	C	B1	D1	H1	E	Ø1	Ø2
300A	528	173	206	448	172	466	30	55	67	6	6.4	12.5
400A	570	173	206	448	172	508	30	55	67	6	6.4	12.5



# NOISE FILTER

3Ø 250V 고감쇄형 Multi-Stage Type



### ● Features

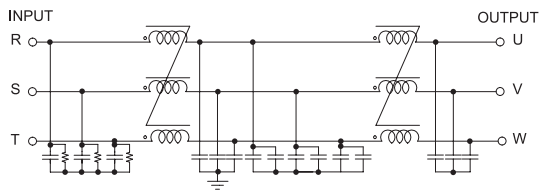
- High Attenuation
- High Voltage Pulse Noise
- 2 Stage Filter
- Band Width : 150KHz ~ 30MHz
- RoHS Compliant
- Inverter Output Type : Model Type"C"  
(WYFT500T2C)

### ● Specifications

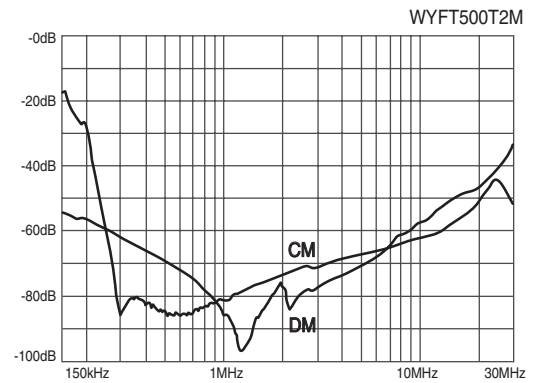
ITEM	MODEL	SYMBOL	WYFT500T2M
Rated Voltage		V	250
Rated Current		A	500
Frequency		Hz	50 / 60
Dielectric Withstand		V	1500VAC or 2250VDC for 1 minute(Line-Case)
Insulation Resistance		MΩ	300
Leakage Current		mA	27
Operating Temperature		°C	-25°C ~ +100°C [Refer to Derating Curve TYPE-2]
Operating Humidity		RH	35 ~ 85%RH
Weight		kg	16

※ Derating Curve of page 519

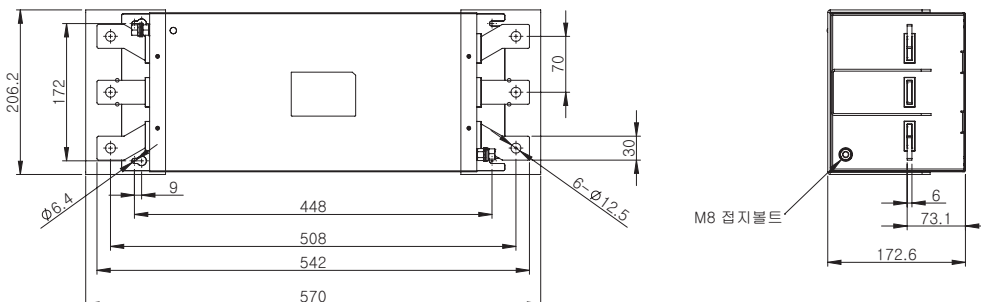
### ● Circuit Diagram



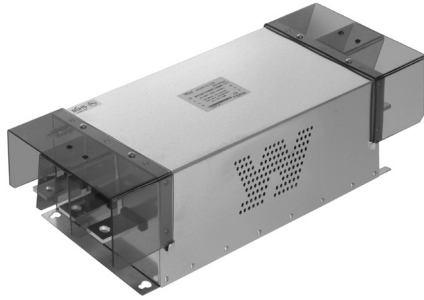
### ● Characteristics



### ● Dimension



트랜스포머  
REACTOR  
리액터  
무정전압릴레이  
SSR  
전력조정기  
TPR  
스위칭파워  
SMP  
노이즈 필터  
NF/F  
하모닉 필터  
H/F  
서지보호기  
SPD  
보호계전기  
RELAY  
누전경보기  
ELD=GF  
R  
영상변류기  
ZCT  
판넬메타  
METER  
계기용변성기  
CT=VT  
SHUNT=FA  
N



### ● Features

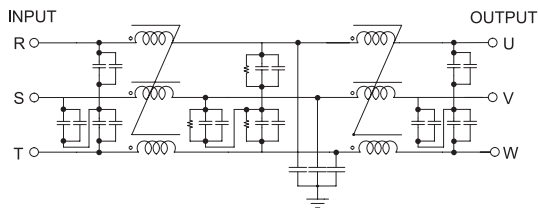
- High Attenuation
- High Voltage Pulse Noise
- 2 Stage Filter
- Band Width : 150KHz ~ 30MHz
- RoHS Compliant
- Inverter Output Type : Model Type "C"  
(WYFT600T2C)

### ● Specifications

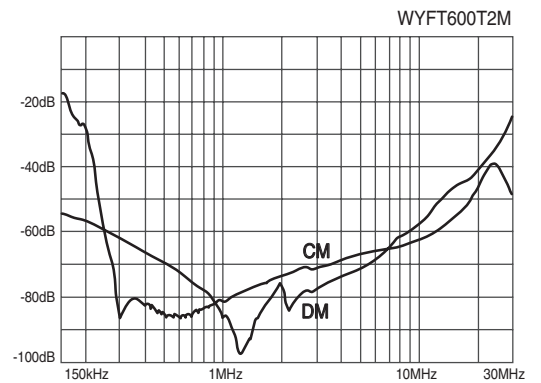
ITEM	MODEL	SYMBOL	WYFT600T2M	WYFT800T2M	WYFT1000T2M	WYFT1200T2M
Rated Voltage	V		250			
Rated Current	A		600	800	1000	1200
Frequency	Hz		50 / 60			
Dielectric Withstand	V		1500VAC or 2250VDC for 1 minute(Line-Case)			
Insulation Resistance	M.Ω		500			
Leakage Current	mA		27			
Operating Temperature	°C		-25°C ~ +100°C [Refer to Derating Curve TYPE - 2]			
Operating Humidity	RH		35 ~ 85%RH			
Weight	kg		23			

※ Derating Curve of page 519

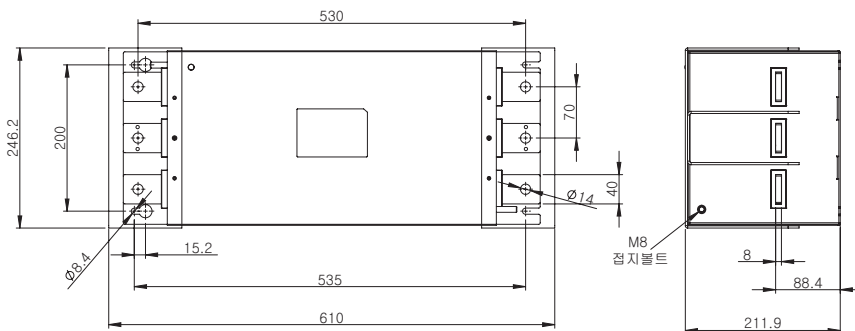
### ● Circuit Diagram



### ● Characteristics



### ● Dimension



# NOISE FILTER

## N Series 3Ø 500V 고감쇄형 Multi-Stage Type

### UL 인증



### ● Features

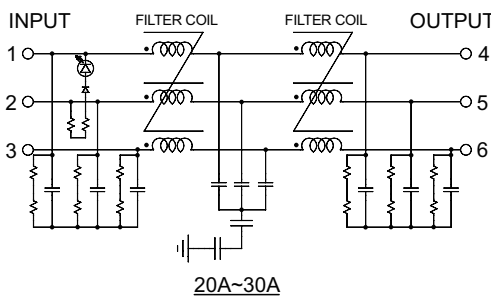
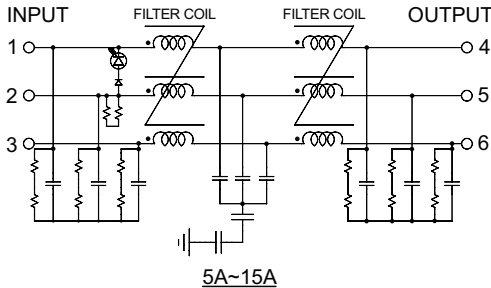
- Wide Band : High Attenuation
- Band Width : 150kHz~30MHz
- RoHS Compliant
- Inverter Output Type : Model Type"C"  
(WYNFTH05T2C)

### ● Specifications

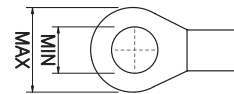
ITEM	MODEL	SYMBOL	WYNFTH05T2M	WYNFTH10T2M	WYNFTH15T2M	WYNFTH20T2M	WYNFTH30T2M
Rated Voltage	V		500Vac				
Rated Current	A		5A	10A	15A	20A	30A
Frequency	Hz		50 / 60				
Dielectric Withstand	V		2500VAC or 2800VDC for 1 minute(Line-Case)				
Insulation Resistance	M.Ω		DC 100M.Ω at the 500Vdc				
Leakage Current	mA		≤5mA at the 500Vac				
Operating Temperature	°C		-25°C ~ +100°C [Refer to Derating Curve TYPE-2]				
Operating Humidity	RH		35 ~ 85%RH				
Weight	kg		1.2			2.2	

※ Derating Curve of page 519

### ● Circuit Diagram

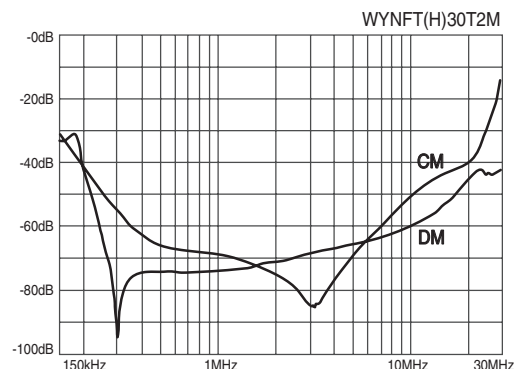
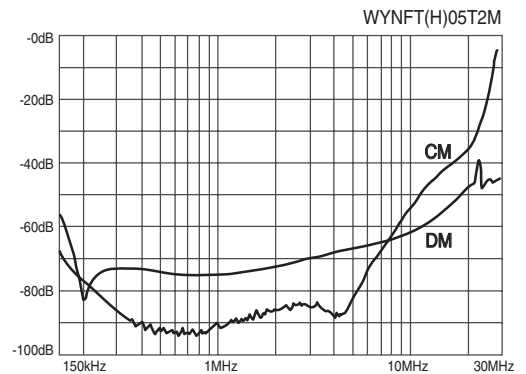


### ● Terminal

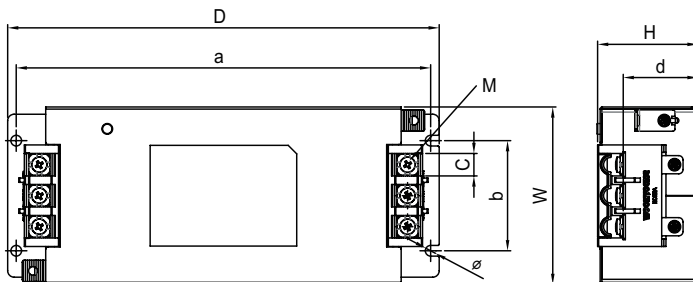


Max 10, Min 4 (5~15A)  
Max 12, Min 5 (20~30A)

### ● Characteristics



### ● Dimension



MODEL	W	H	D	a	b	c	d	M	Ø
WYNFTH5 ~ 15T2M	83	47	202	194	51.5	10.5	35	4	5
WYNFTH20 ~ 30T2M	95	50.3	242	232	60	13	35.5	5	5

트랜스포머  
REACTOR  
리액터  
무정전압블레이  
SSR  
전력조정기  
TPR  
스위칭파워  
SMPs  
노이즈 필터  
N/F  
하모닉 필터  
H/F  
서지보호기  
SPD  
보호계전기  
RELAY  
누전경보기  
ELD=GF  
R  
영상변류기  
ZCT  
판넬메타  
METER  
계기용변성기  
CT=V  
T  
선트랜  
SHUNT=FA  
N

# NOISE FILTER

## N Series 3Ø 500V 고감쇄형 Multi-Stage Type

### UL 인증



### ● Features

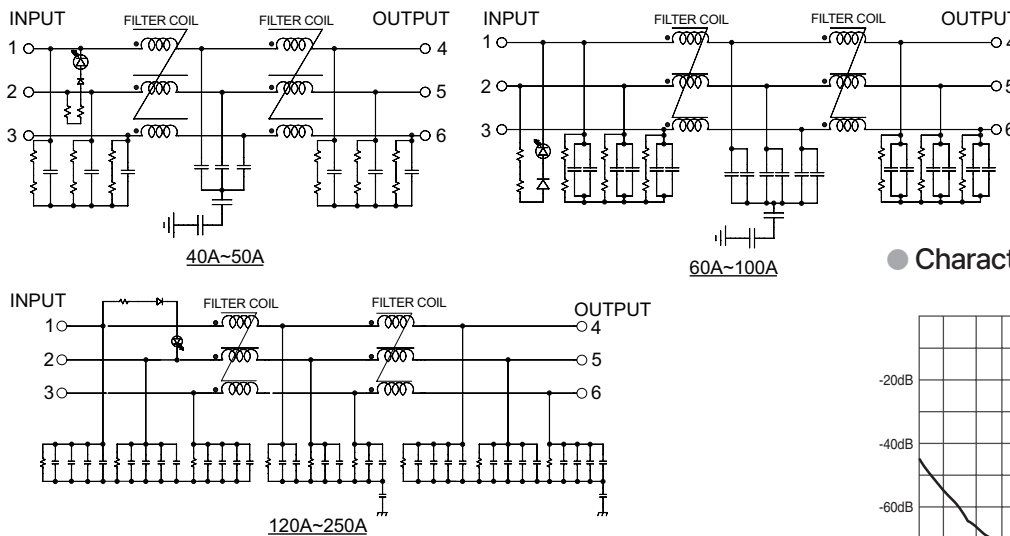
- Wide Band : High Attenuation
- Band Width : 150kHz ~ 30MHz
- RoHS Compliant
- Inverter Output Type : Model Type"C"  
(WYNFTH40T2C)

### ● Specifications

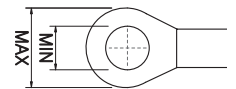
ITEM	MODEL	SYMBOL	WYNF	WYNF	WYNF	WYNF	WYNF	WYNF	WYNF	WYNF	WYNF
			TH40T2M	TH50T2M	TH60T2M	TH80T2M	TH100T2M	TH120T2M	TH150T2M	TH200T2M	TH250T2M
Rated Voltage	V		500Vac								
Rated Current	A		40A	50A	60A	80A	100A	120A	150A	200A	250A
Frequency	Hz		50 / 60								
Dielectric Withstand	V		2500VAC or 2800VDC for 1 minute(Line-Case)								
Insulation Resistance	M.Ω		DC 100M.Ω at the 500Vdc								
Leakage Current	mA		≤5mA at the 500Vac						≤26mA at the 500Vac		
Operating Temperature	°C		-25°C ~ +100°C [Refer to Derating Curve TYPE-2]								
Operating Humidity	RH		35 ~ 85%RH								
Weight	kg		2.2			3.5			4.5		

※ Derating Curve of page 519

### ● Circuit Diagram

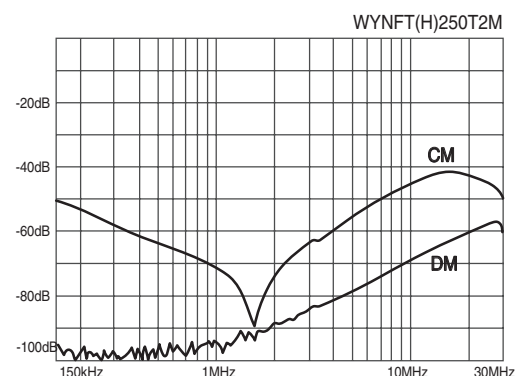
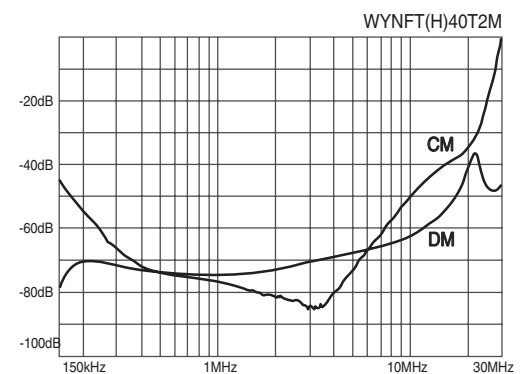


### ● Terminal

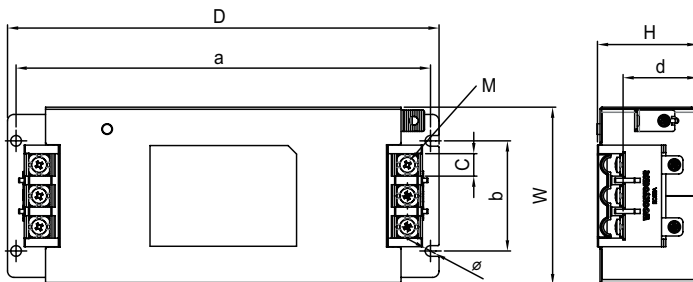


Max 16, Min 6 (40~50A)  
Max 23, Min 8 (60~100A)  
Max 28, Min 8 (120~250A)

### ● Characteristics



### ● Dimension



MODEL	W	H	D	a	b	c	d	M	Ø
WYNFTH40 ~ 50T2M	109	61.2	295	284.5	74	17	46	6	5
WYNFTH60 ~ 100T2M	137	76.9	380	368	96	24	59.7	8	5
WYNFTH120 ~ 250T2M	171.6	151.6	445.4	416	140	28.5	120.1	8	6.5

# NOISE FILTER

3Ø 500V 고감쇄형 Multi-Stage Type



### ● Features

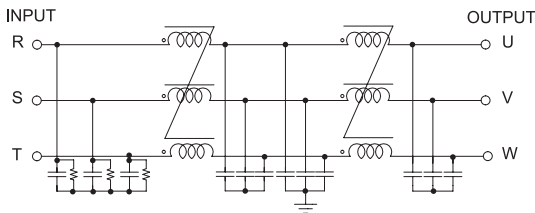
- High Attenuation
- High Voltage Pulse Noise
- 2 Stage Filter
- Band Width : 150KHz ~ 30MHz
- RoHS Compliant
- Inverter Output Type : Model Type"C"  
(WYFTH05T2C)

### ● Specifications

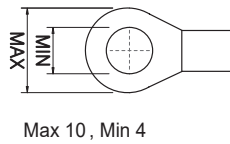
ITEM	MODEL	SYMBOL	WYFTH05T2M	WYFTH10T2M	WYFTH15T2M	WYFTH20T2M	WYFTH30T2M
Rated Voltage	V		500				
Rated Current	A		5	10	15	20	30
Frequency	Hz		50 / 60				
Dielectric Withstand	V		2500VAC or 2800VDC for 1 minute(Line-Case)				
Insulation Resistance	MΩ		500				
Leakage Current	mA		54				
Operating Temperature	°C		-25°C ~ +100°C [Refer to Derating Curve TYPE-2]				
Operating Humidity	RH		35 ~ 85%RH				
Weight	kg		0.8		1.7		

※ Derating Curve of page 519

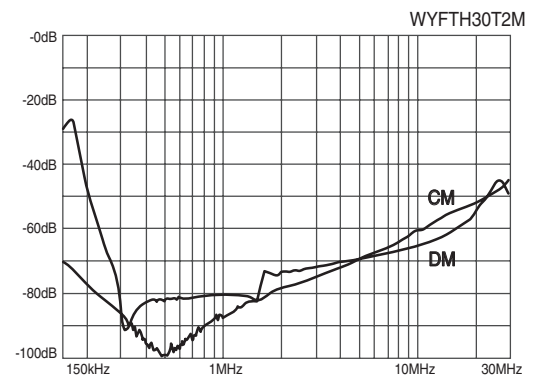
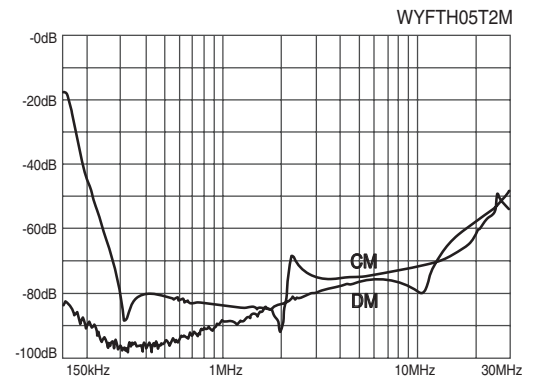
### ● Circuit Diagram



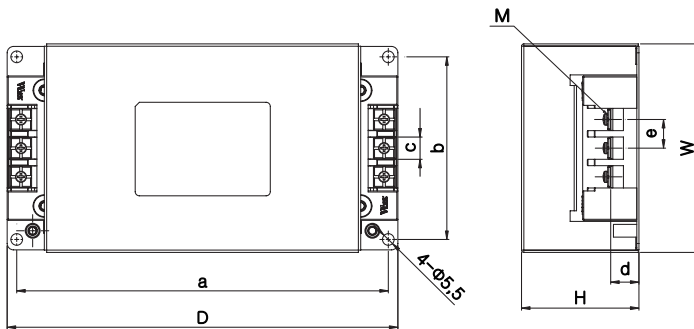
### ● Terminal



### ● Characteristics

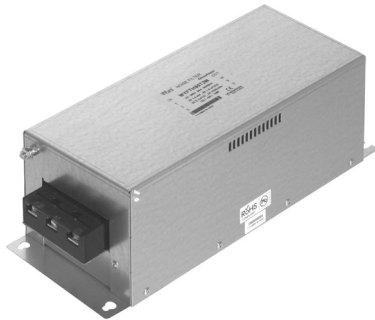


### ● Dimension



MODEL	W	H	D	a	b	c	d	e
WYFT05 ~ 15T2M	98	55	184	175	86	10.5	13	13.5
WYFT20 ~ 30T2M	116	75	234	219	98	10.5	14	13.5

TRANS=NCCT 트랜스포머  
 REACTOR 리액터  
 SSS 무정전압블레이  
 TPR 전력조정기  
 SMPSS 스위칭파워  
 NF/F 노이즈필터  
 H/F 하모닉필터  
 SPD 서지보호기  
 RELAY 보호계전기  
 ELD=GFRL 누전경보기  
 ZCT 영상변류기  
 METER 판넬메타  
 CT=VT 계기용변성기  
 SHUNT=FAH 션트팬



### ● Features

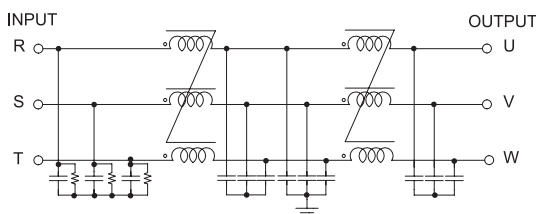
- High Attenuation
- High Voltage Pulse Noise
- 2 Stage Filter
- Band Width : 150KHz ~ 30MH
- RoHS Compliantz
- Inverter Output Type : Model Type"C"  
(WYFTH40T2C)

### ● Specifications

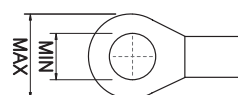
ITEM	MODEL	SYMBOL	WYF								
			TH40T2M	TH50T2M	TH60T2M	TH80T2M	TH100T2M	TH120T2M	TH150T2M	TH200T2M	TH250T2M
Rated Voltage	V		500								
Rated Current	A		40	50	60	80	100	120	150	200	250
Frequency	Hz		50 / 60								
Dielectric Withstand	V		2500VAC or 2800VDC for 1 minute(Line-Case)								
Insulation Resistance	MΩ		500								
Leakage Current	mA		54								
Operating Temperature	°C		-25°C ~ +100°C [Refer to Derating Curve TYPE-2]								
Operating Humidity	RH		35 ~ 85%RH								
Weight	kg		3.5		7.0			10.5		12.0	

※ Derating Curve of page 519

### ● Circuit Diagram

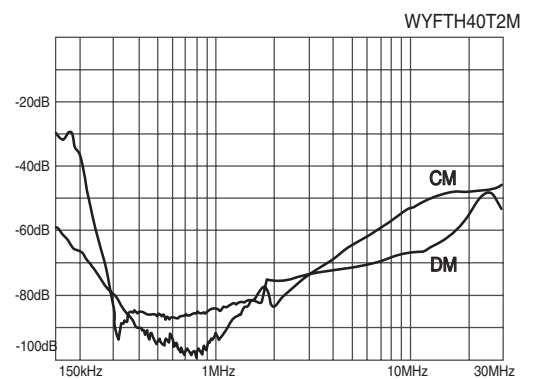


### ● Terminal

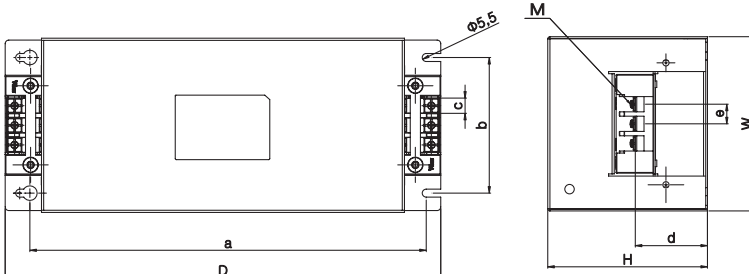


Max 10, Min 4(40~50A)  
 Max 14, Min 6(60~100A)  
 Max 22, Min 8(120~150A)  
 Max 24, Min 8(200~250A)

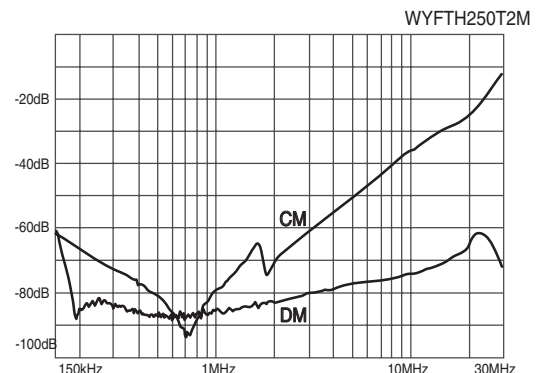
### ● Characteristics



### ● Dimension

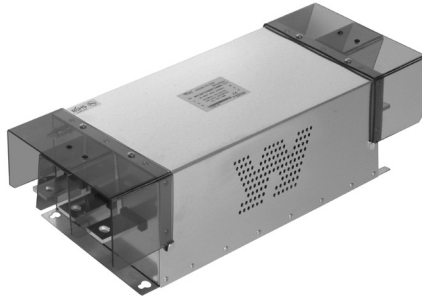


MODEL	W	H	D	a	b	c	d	e	M
WYFT40 ~ 50T2M	124	110	300	273	93	10.5	50	13.5	M4
WYFT60 ~ 100T2M	140	130	400	373	113	15	60	27.5	M6
WYFT120 ~ 150T2M	170	163	444	417	143	23	71	35	M8
WYFT200 ~ 250T2M	170	163	444	417	143	25	76	38.5	M8



# NOISE FILTER

3Ø 500V 고감쇄형 Multi-Stage Type



## ● Features

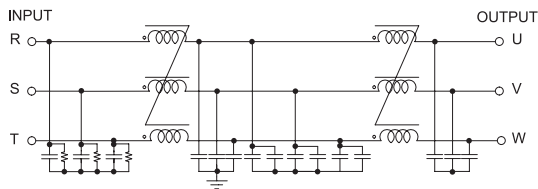
- High Attenuation
- High Voltage Pulse Noise
- 2 Stage Filter
- Band Width : 150KHz ~ 30MHz
- RoHS Compliant
- Inverter Output Type : Model Type"C"  
(WYFTH300T2C)

## ● Specifications

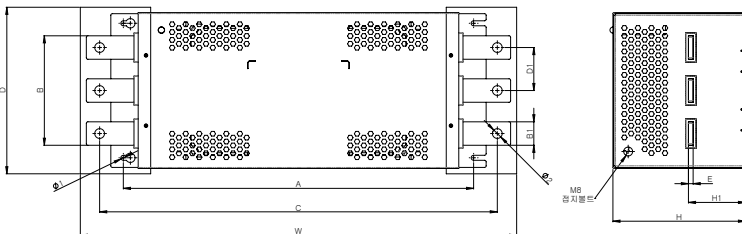
ITEM	MODEL	SYMBOL	WYFTH300T2M	WYFTH400T2M
Rated Voltage	V		500	
Rated Current	A		300	400
Frequency	Hz		50 / 60	
Dielectric Withstand	V		2500VAC or 2800VDC for 1 minute(Line-Case)	
Insulation Resistance	MΩ		500	
Leakage Current	mA		54	
Operating Temperature	°C		-25°C ~ +100°C [Refer to Derating Curve TYPE-2]	
Operating Humidity	RH		35 ~ 85%RH	
Weight	kg		12.5	15.5

※ Derating Curve of page 519

## ● Circuit Diagram

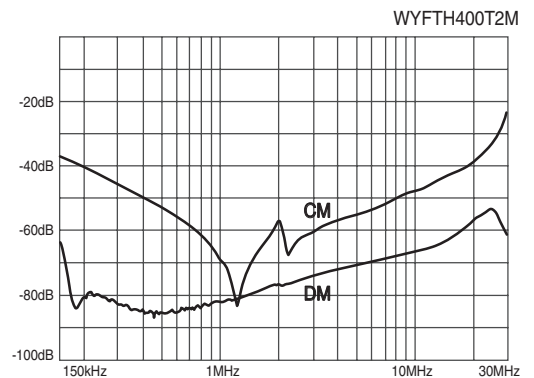
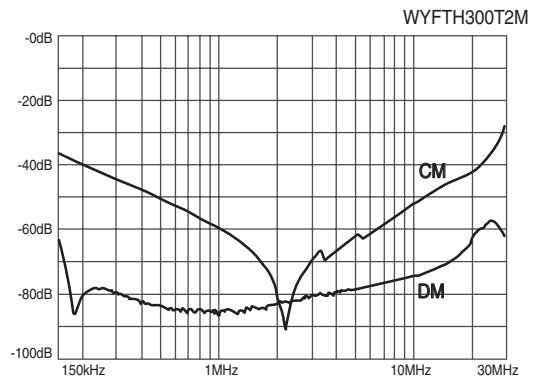


## ● Dimension



MODEL	W	H	D	A	B	C	B1	D1	H1	E	Ø1	Ø2
300A	528	173	206	448	172	466	30	55	67	6	6.4	12.5
400A	570	173	206	448	172	508	30	55	67	6	6.4	12.5

## ● Characteristics

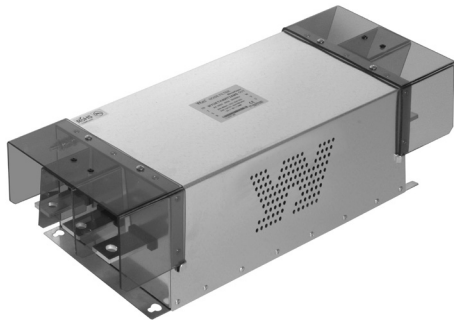


트랜스포머  
REACTOR  
리액터  
무정전압블레이  
SSR  
전력조정기  
TPR  
스위칭파워  
SMP  
노이즈 필터  
NF  
하모닉 필터  
HF  
서지보호기  
SPD  
보호계전기  
RELAY  
누전경보기  
ELD = GFR  
영상변류기  
ZCT  
판넬메타  
METER  
계기용변성기  
CT = VT  
SHUNT = FAN  
선트팬

# NOISE FILTER

3Ø 500V 고감쇄형 Multi-Stage Type

CE RoHS



## ● Features

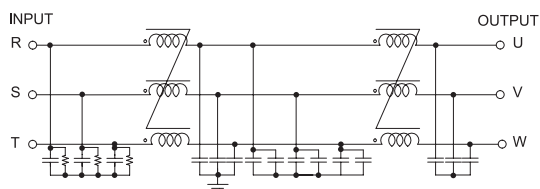
- High Attenuation
- High Voltage Pulse Noise
- 2 Stage Filter
- Band Width : 150KHz ~ 30MHz
- RoHS Compliant
- Inverter Output Type : Model Type"C"  
(WYFTH500T2C)

## ● Specifications

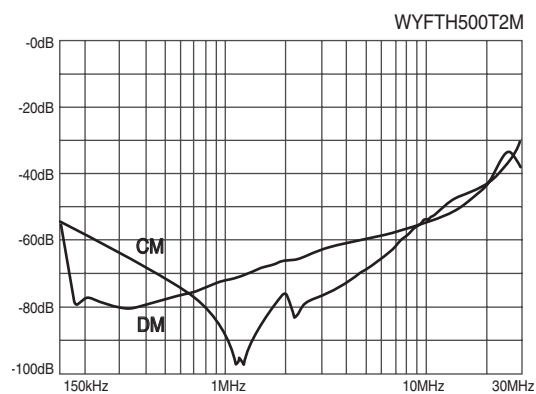
ITEM	MODEL	SYMBOL	WYFTH500T2M
Rated Voltage	V		500
Rated Current	A		500
Frequency	Hz		50 / 60
Dielectric Withstand	V		2500VAC or 2800VDC for 1 minute(Line-Case)
Insulation Resistance	MΩ		500
Leakage Current	mA		54
Operating Temperature	°C		-25°C ~ +100°C [Refer to Derating Curve TYPE-2]
Operating Humidity	RH		35 ~ 85%RH
Weight	kg		16

※ Derating Curve of page 519

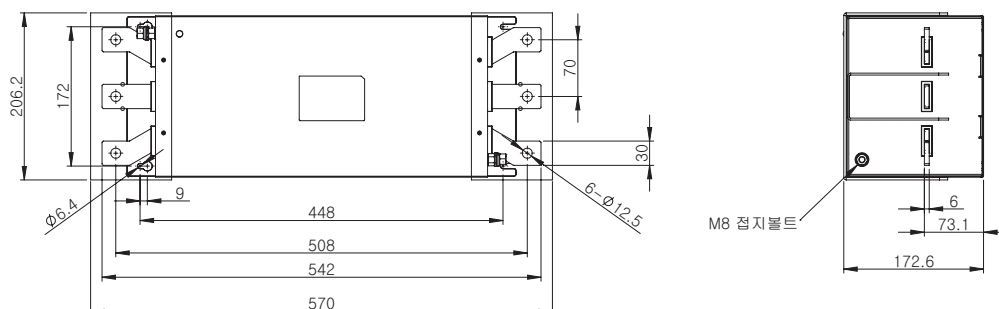
## ● Circuit Diagram



## ● Characteristics

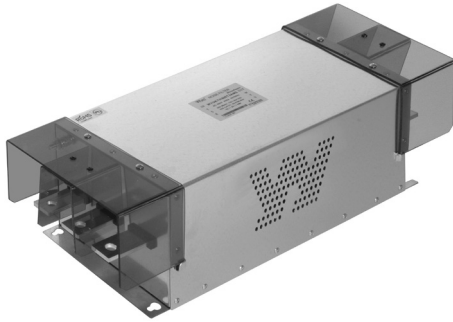


## ● Dimension



# NOISE FILTER

3Ø 500V 고감쇄형 Multi-Stage Type



### ● Features

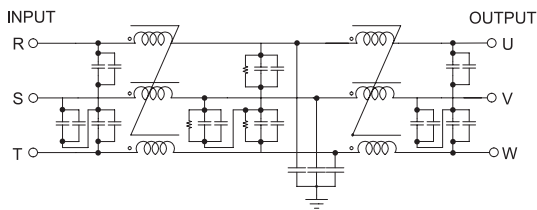
- High Attenuation
- High Voltage Pulse Noise
- 2 Stage Filter
- Band Width : 150KHz ~ 30MHz
- RoHS Compliant
- Inverter Output Type : Model Type "C"  
(WYFTH600T2C)

### ● Specifications

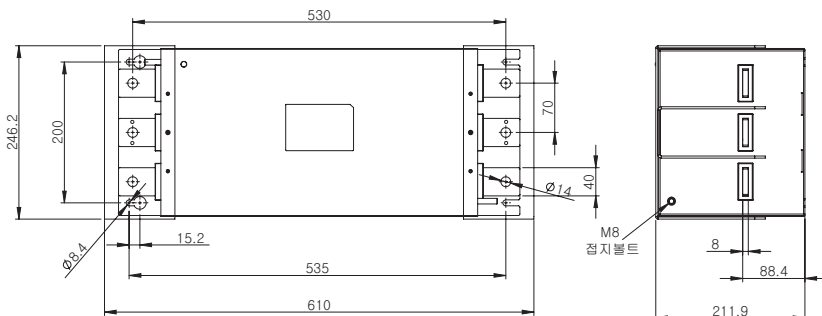
ITEM	MODEL	SYMBOL	WYFTH600T2M	WYFTH800T2M	WYFTH1000T2M	WYFTH1200T2M
Rated Voltage		V	500			
Rated Current		A	600	800	1000	1200
Frequency		Hz	50 / 60			
Dielectric Withstand		V	2500VAC or 2800VDC for 1 minute(Line-Case)			
Insulation Resistance		MΩ	500			
Leakage Current		mA	54			
Operating Temperature		°C	-25°C ~ +100°C [Refer to Derating Curve TYPE-2]			
Operating Humidity		RH	35 ~ 85%RH			
Weight		kg	23			

※ Derating Curve of page 519

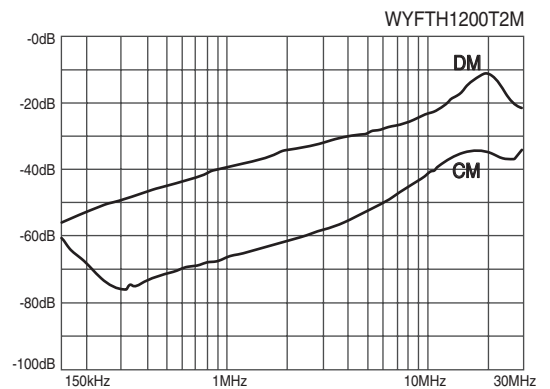
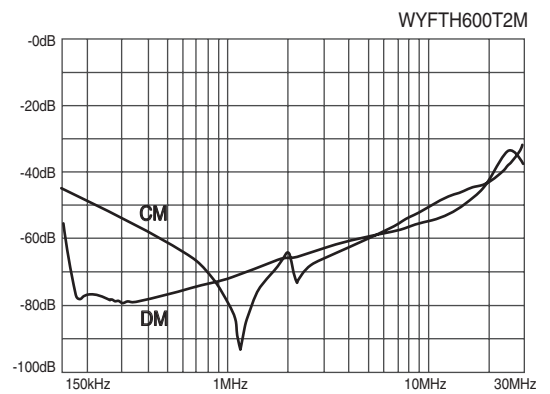
### ● Circuit Diagram



### ● Dimension

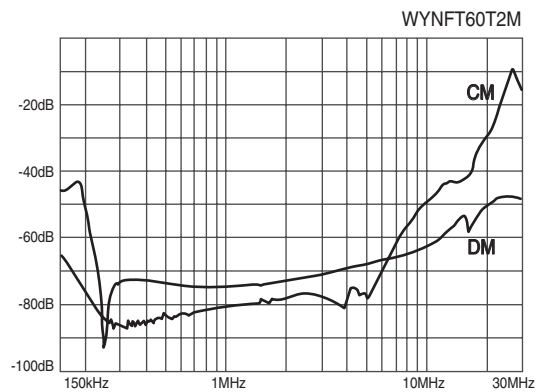
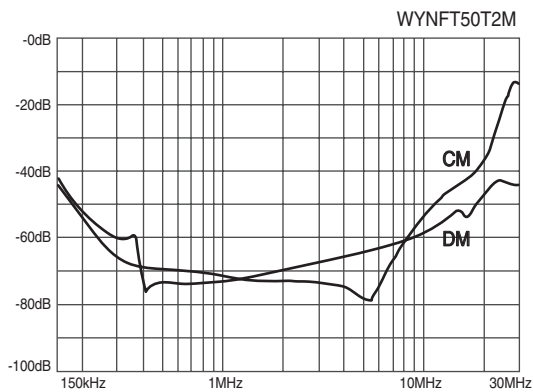
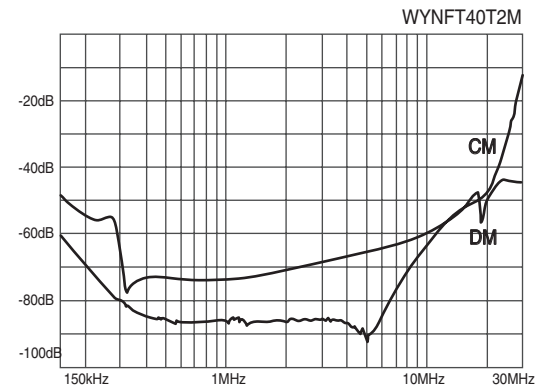
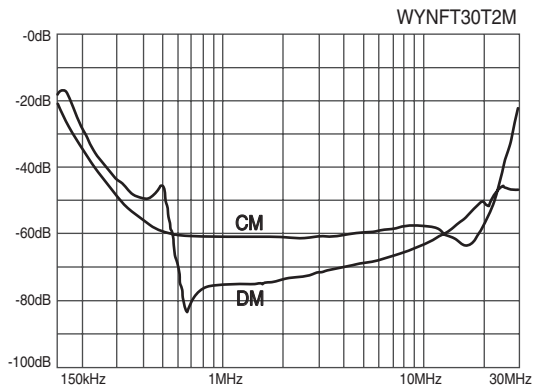
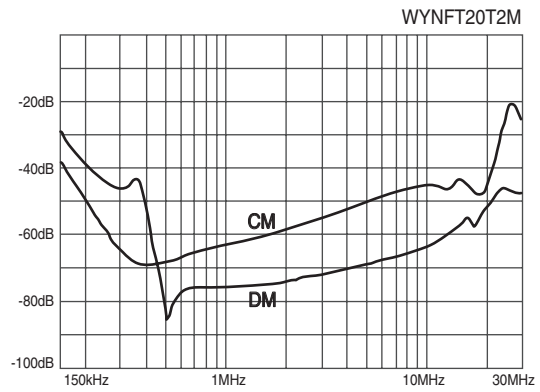
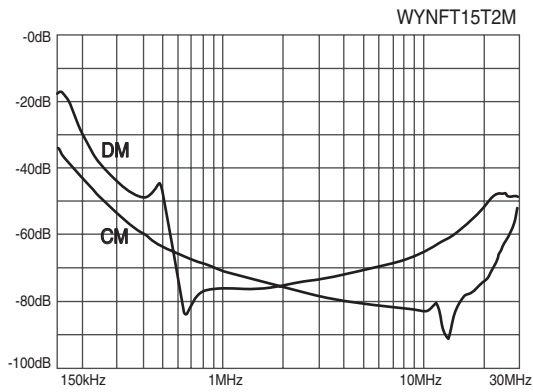
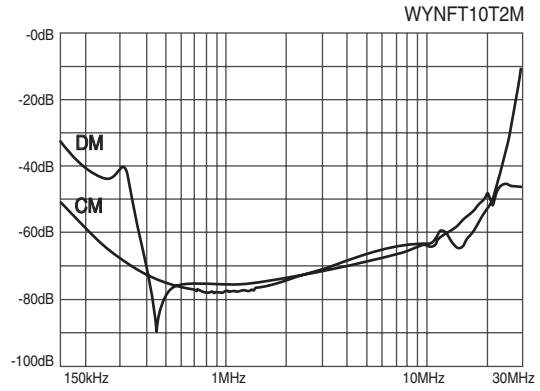
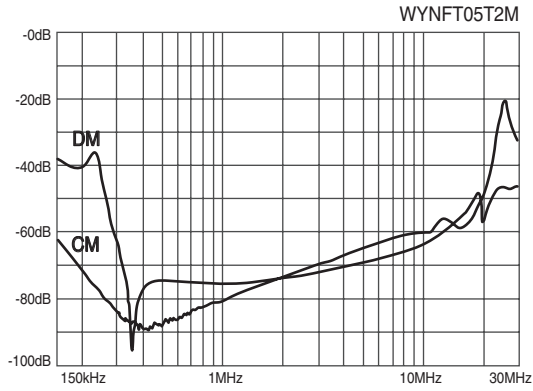


### ● Characteristics



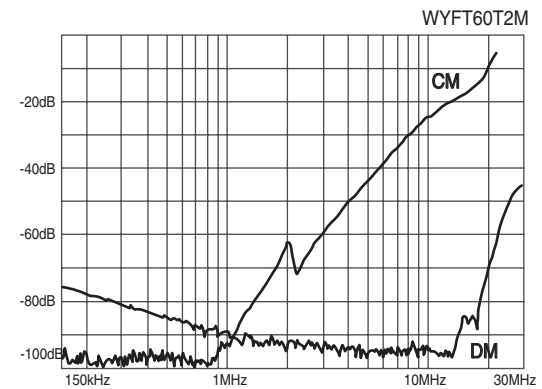
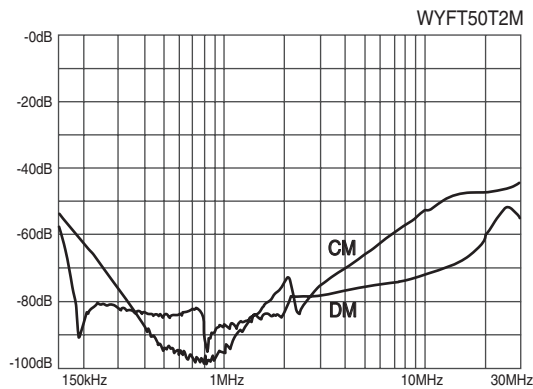
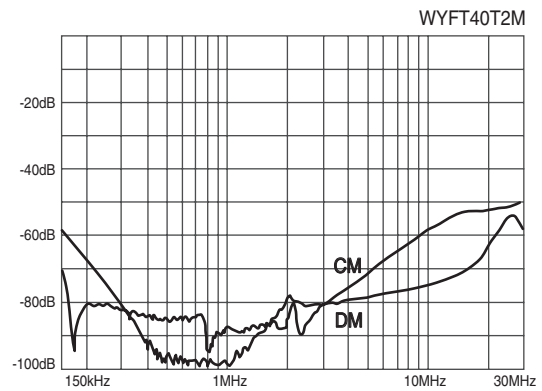
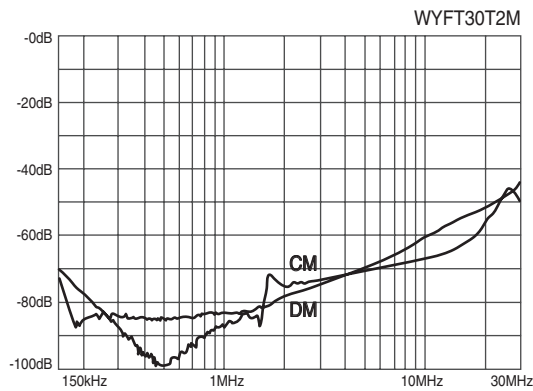
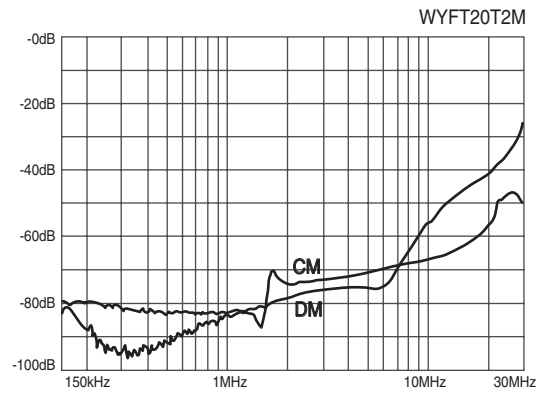
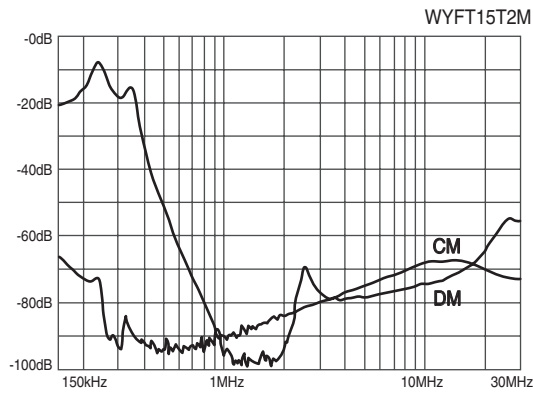
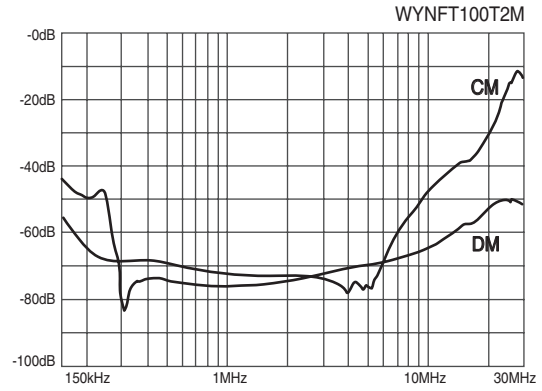
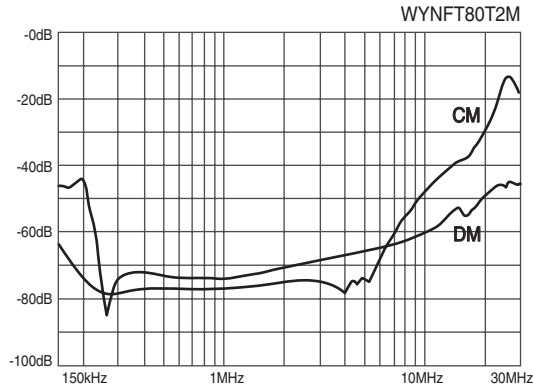
트랜스포머  
REACTOR  
리액터  
무정전압블레이  
SSR  
전력조정기  
TPR  
스위칭파워  
SMP  
노이즈필터  
H/F  
하모닉필터  
SPD  
서지보호기  
RELAY  
보호계전기  
E/LD=GF  
R  
영상변류기  
ZCT  
METER  
판넬메타  
계기용변성기  
CT=VT  
SHUNT=FA  
N

● Characteristics



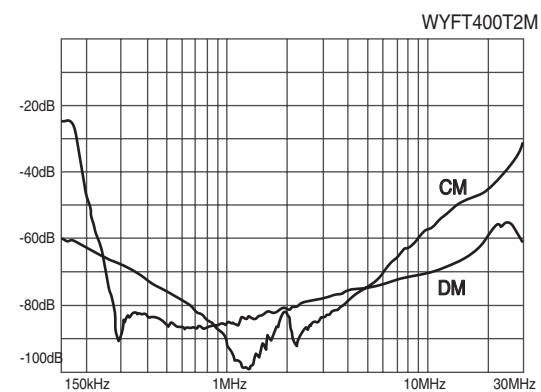
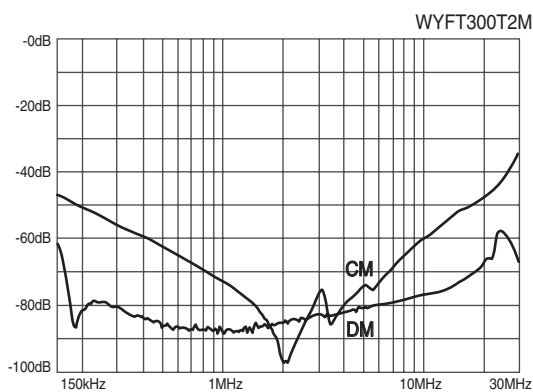
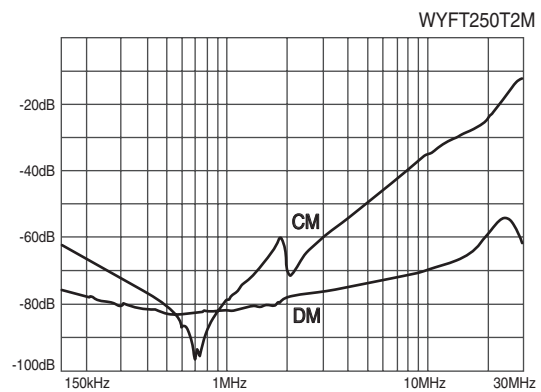
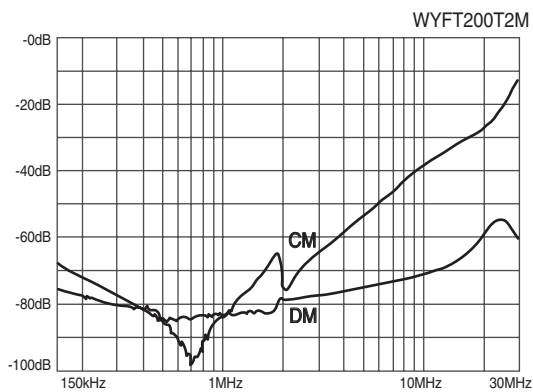
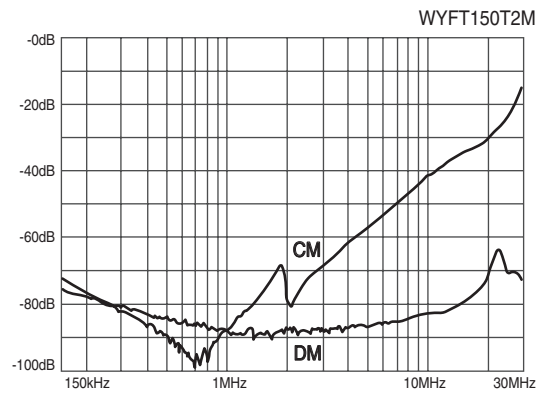
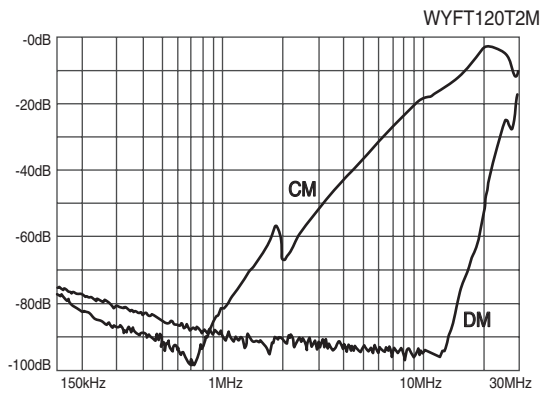
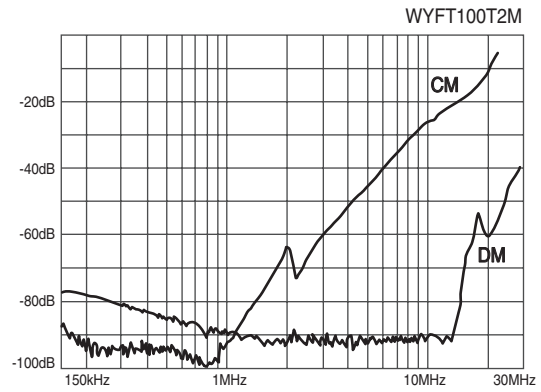
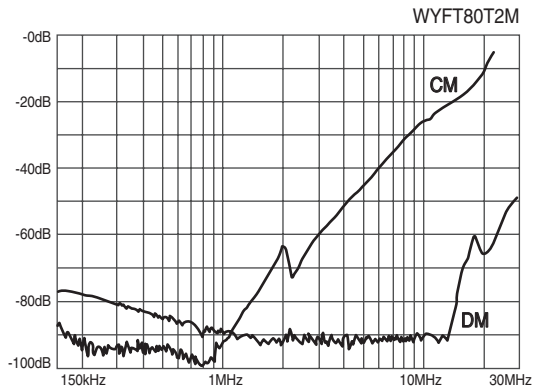
※ CM : Common mode, DM : Differential mode

### ● Characteristics

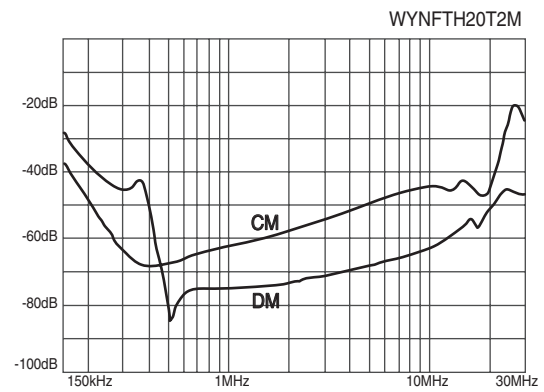
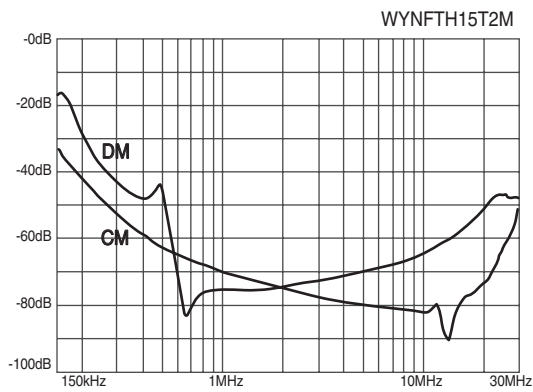
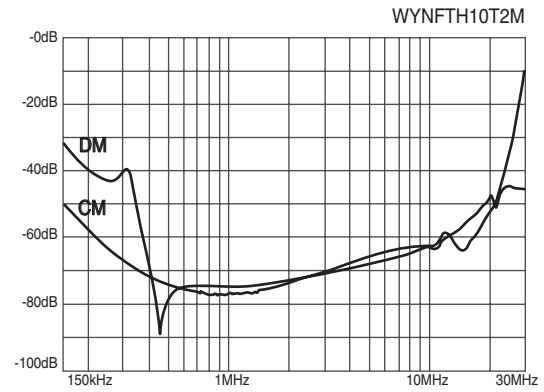
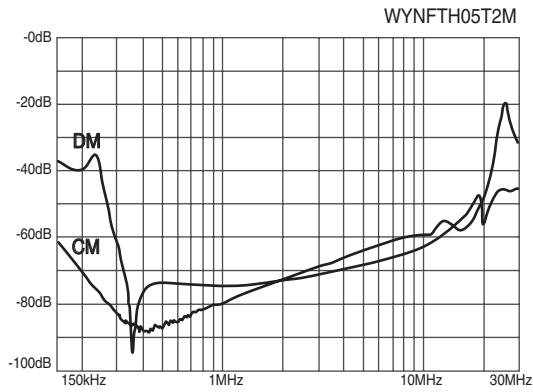
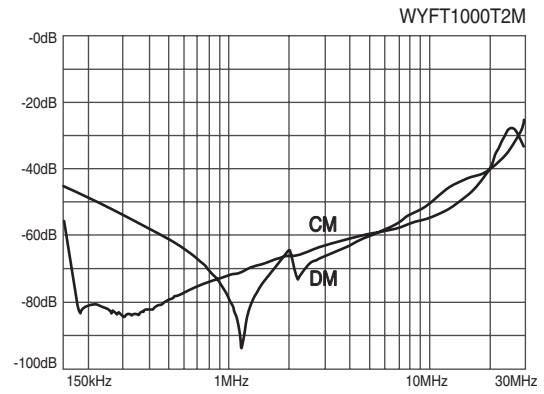
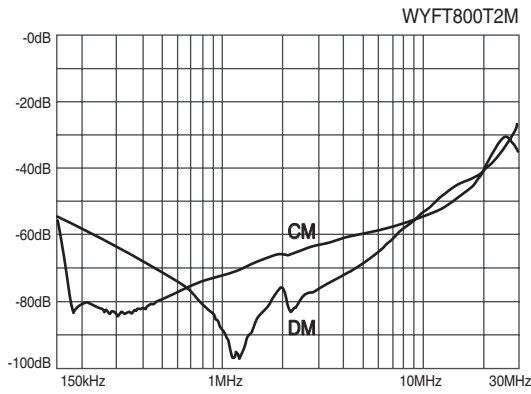
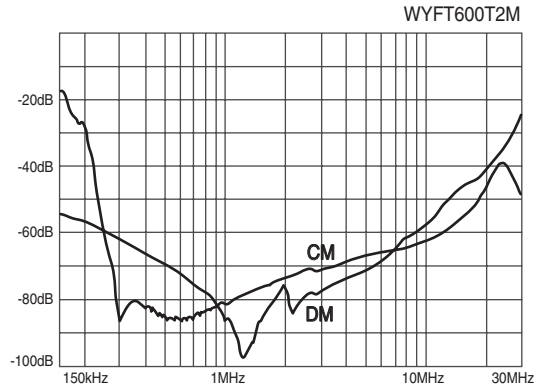
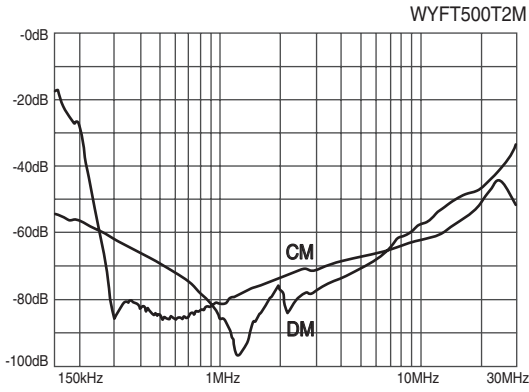


트랜스포머  
REACTOR  
리액터  
무정전압블레이  
SSR  
전력조정기  
TPR  
스위칭파워  
SMPSP  
노이즈 필터  
N/F  
하모닉 필터  
H/F  
서지보호기  
SPD  
보호계전기  
RELAY  
누전경보기  
ELD = GFR  
영상변류기  
ZCT  
판넬메타  
METER  
계기용변성기  
CT = VT  
선트랜팬  
SHUNT = FAN

### ● Characteristics

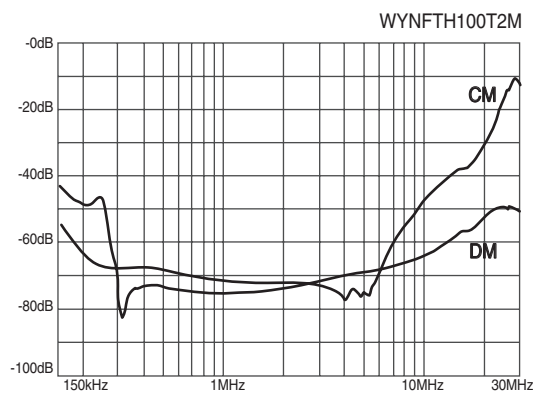
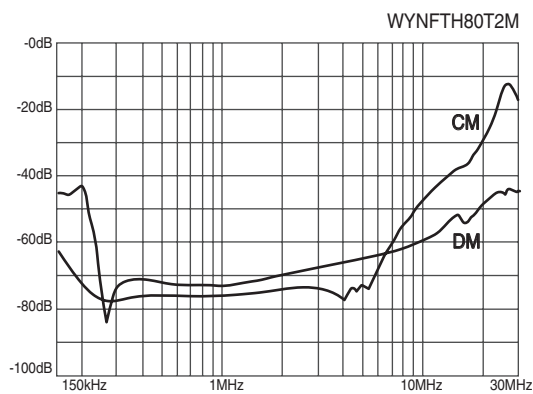
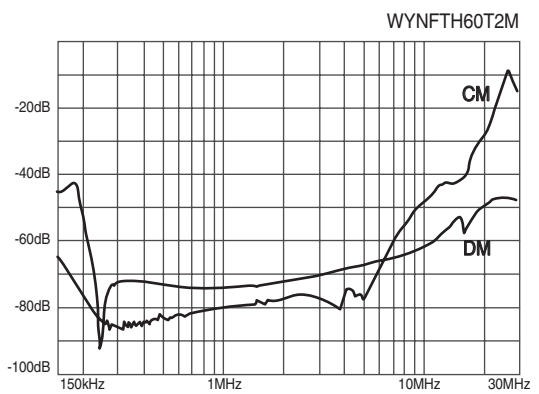
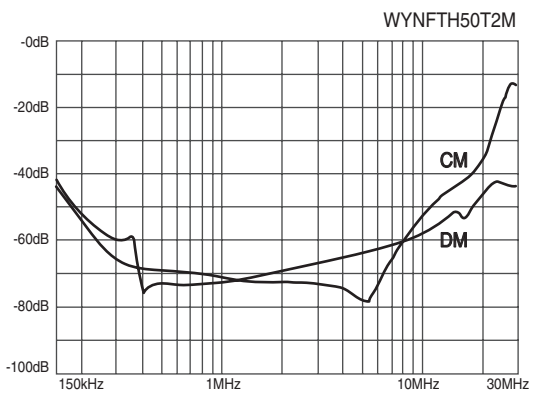
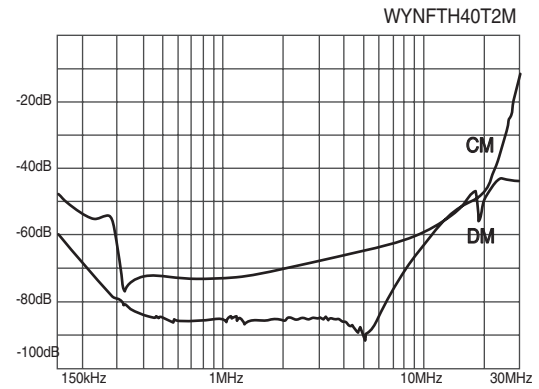
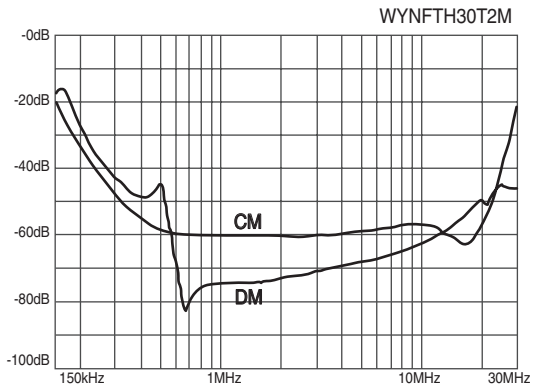


### ● Characteristics

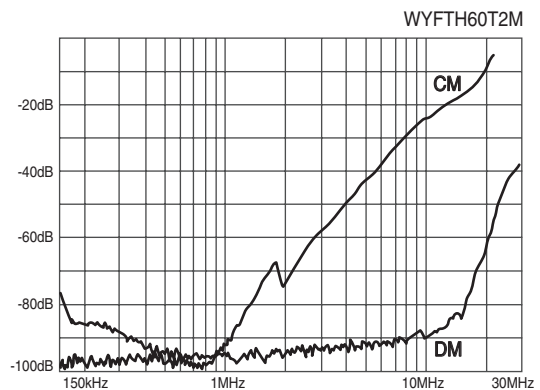
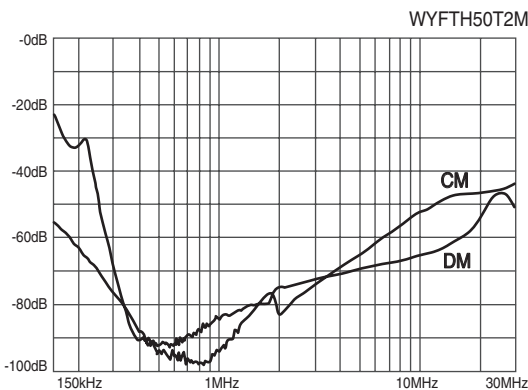
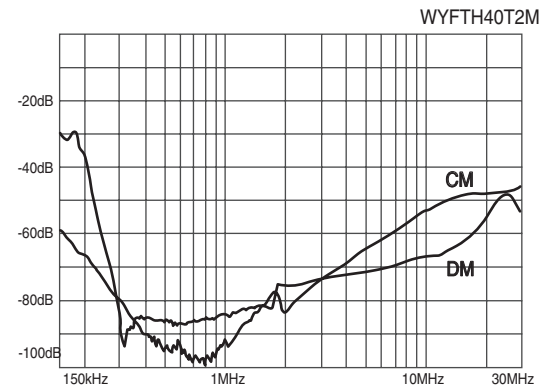
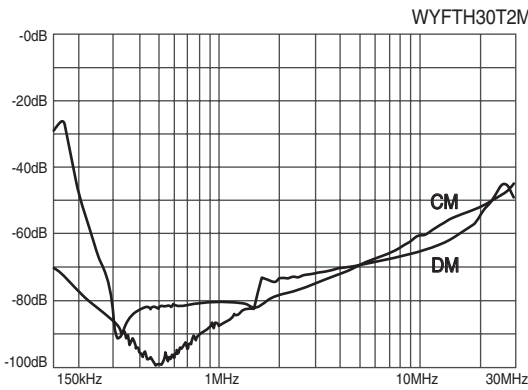
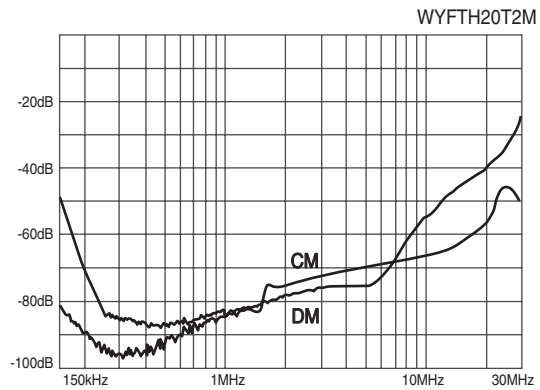
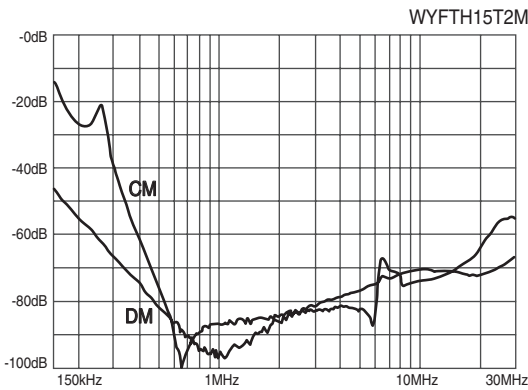
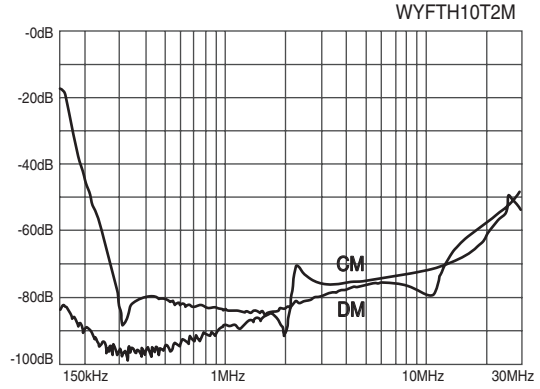
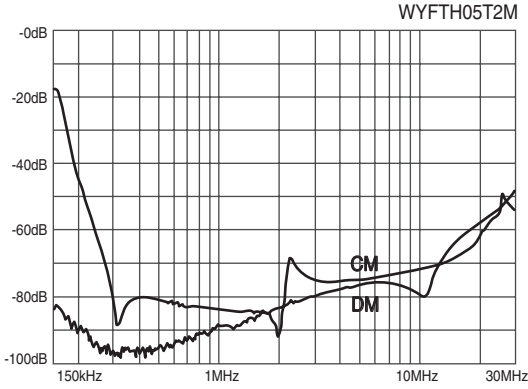


트랜스포머  
REACTOR  
리액터  
무정전압블레이  
SSR  
전력조정기  
TPR  
스위칭파워  
SMPSS  
노이즈 필터  
N/F  
하모닉 필터  
H/F  
서지보호기  
SPD  
보호계전기  
RELAY  
누전경보기  
ELD = GFR  
영상변류기  
ZCT  
판넬메타  
METER  
계기용변성기  
CT = VT  
선트랜팬  
SHUNT = FAN

● Characteristics



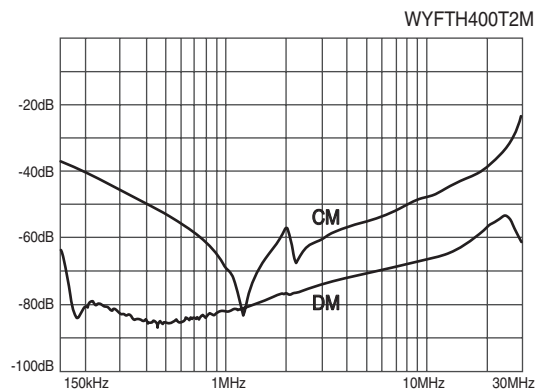
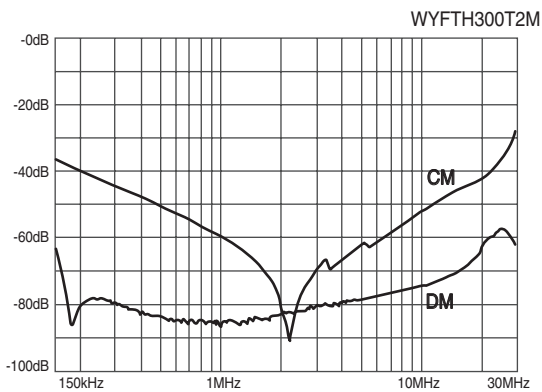
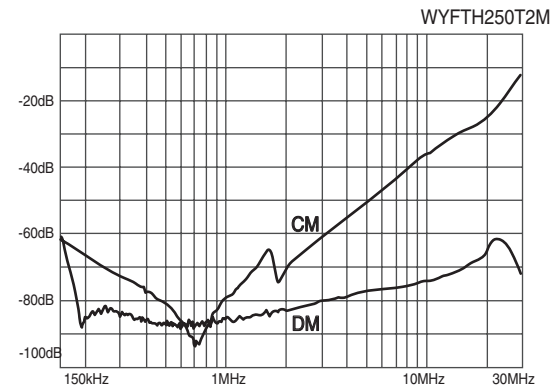
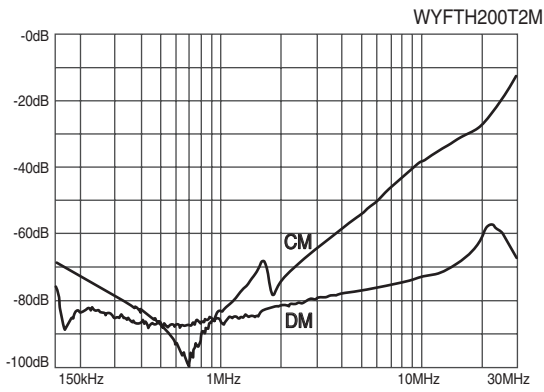
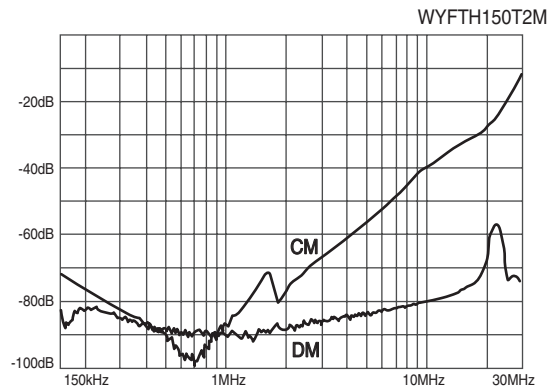
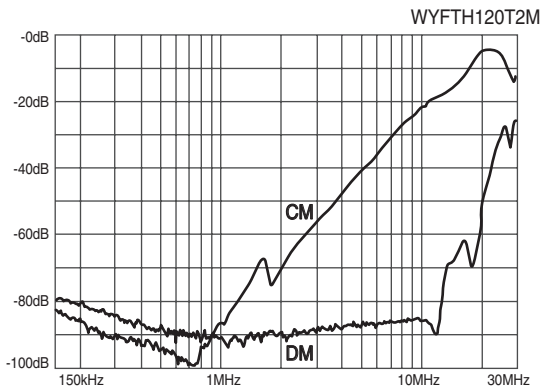
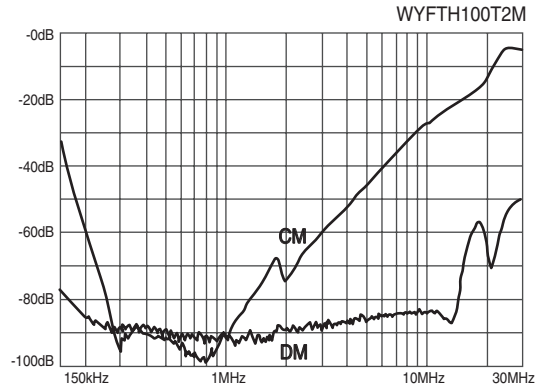
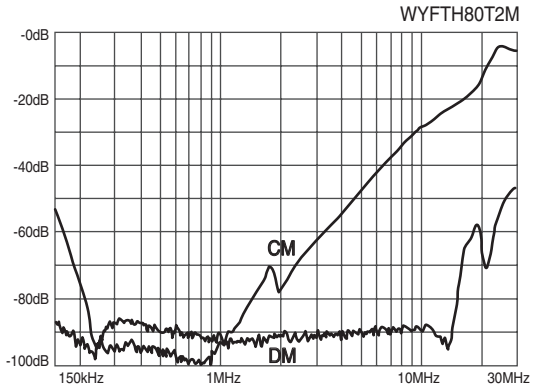
### ● Characteristics



※ CM : Common mode, DM : Differential mode

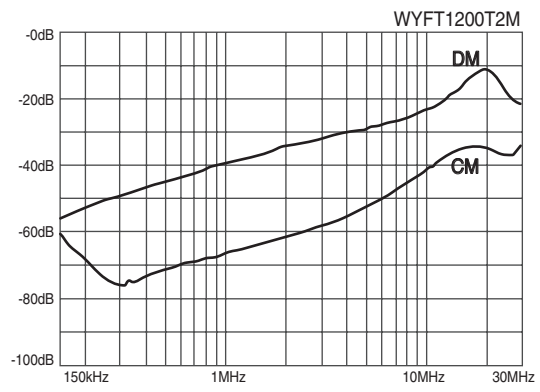
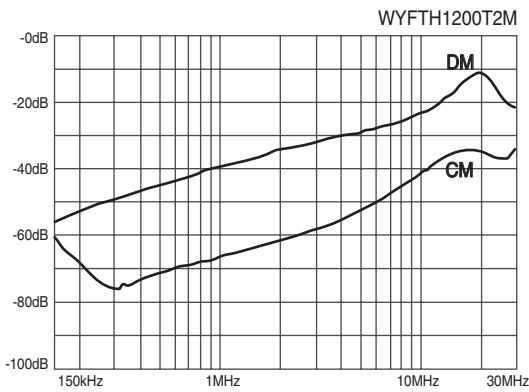
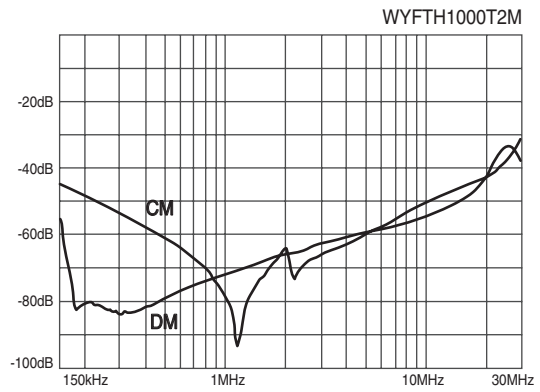
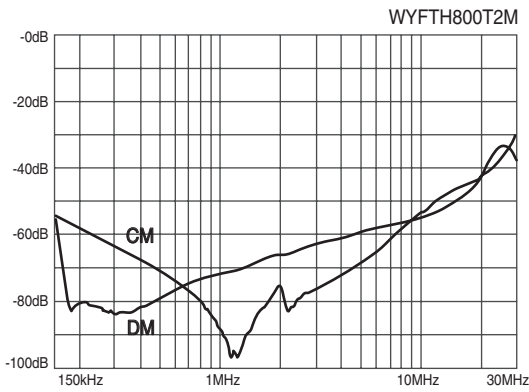
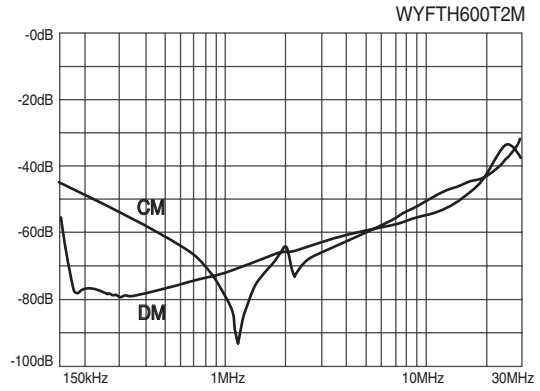
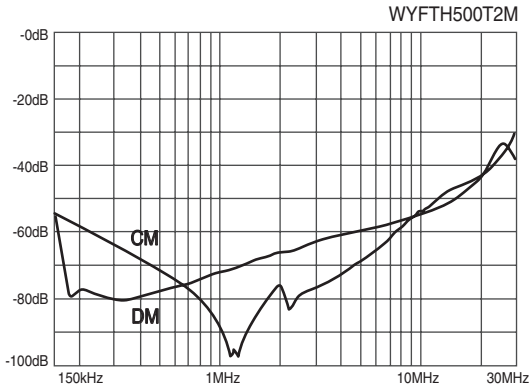
트랜스포머  
REACTOR  
리액터  
무정전압 레이어  
SSR  
전력조정기  
TPR  
스위칭파워  
SMP  
노이즈 필터  
N/F  
하모닉 필터  
H/F  
서지보호기  
SPD  
보호계전기  
RELAY  
누전경보기  
ELD = GFR  
영상변류기  
ZCT  
판넬메타  
METER  
계기용변성기  
CT = VT  
SHUNT = FAN  
선트팬

● Characteristics



※ CM : Common mode, DM : Differential mode

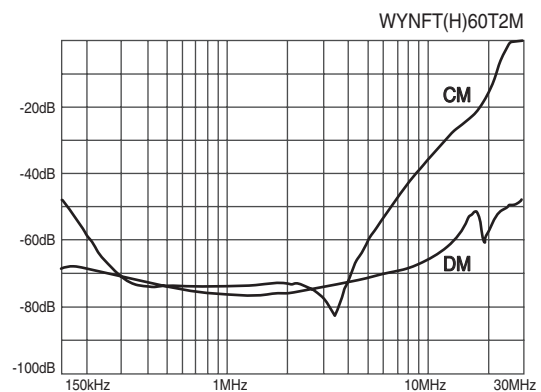
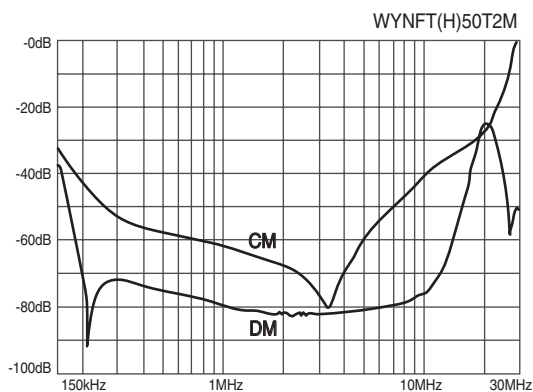
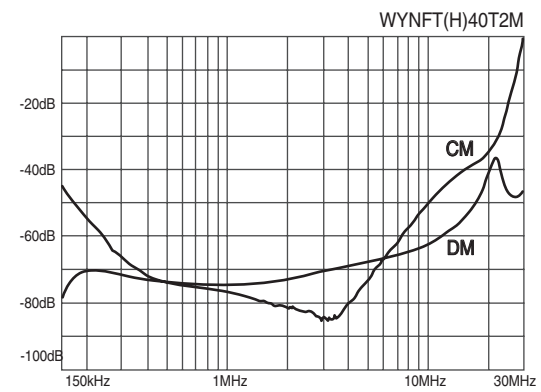
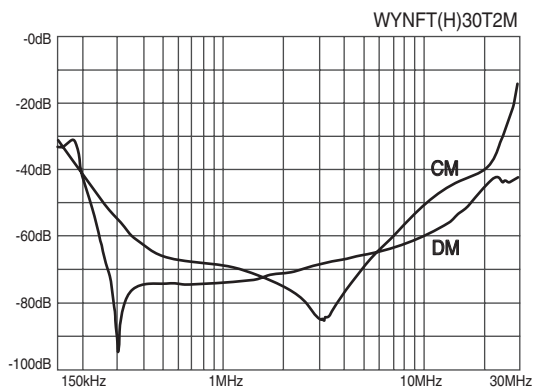
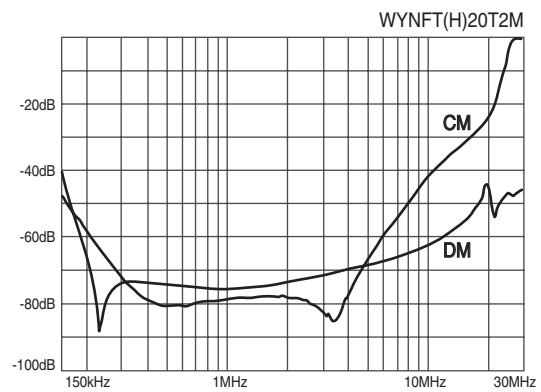
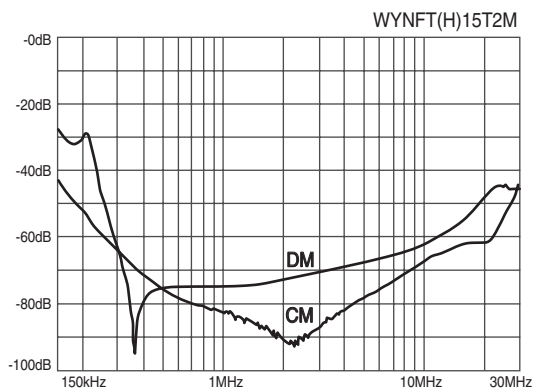
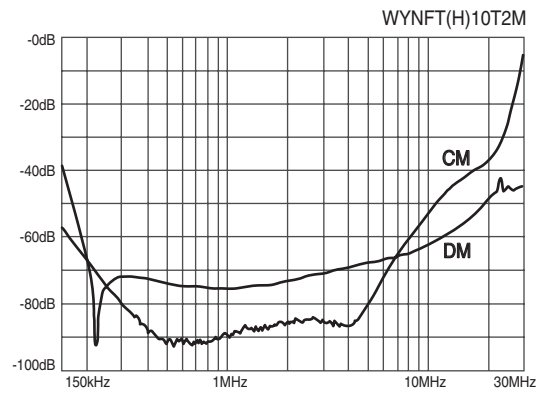
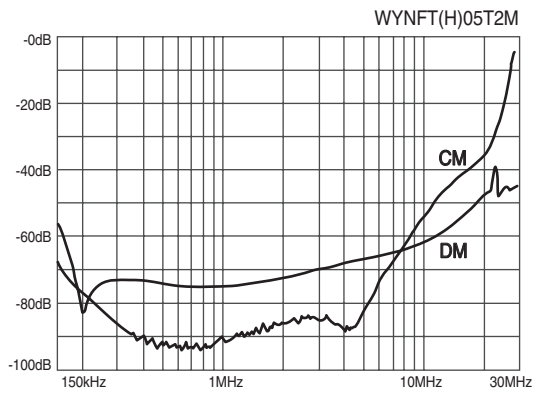
● Characteristics



※ CM : Common mode, DM : Differential mode

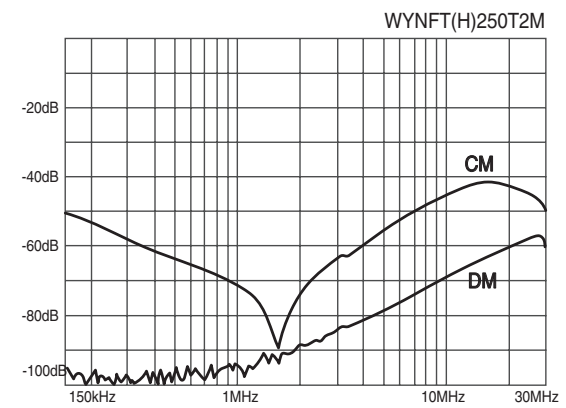
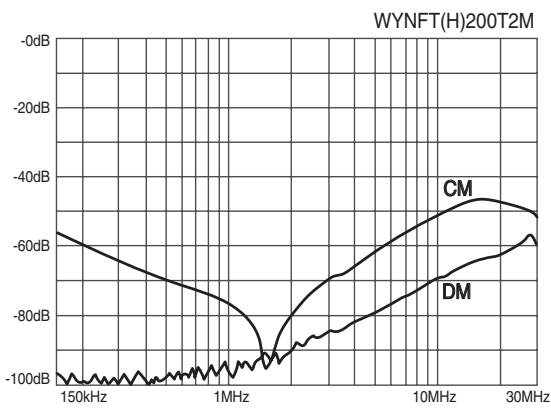
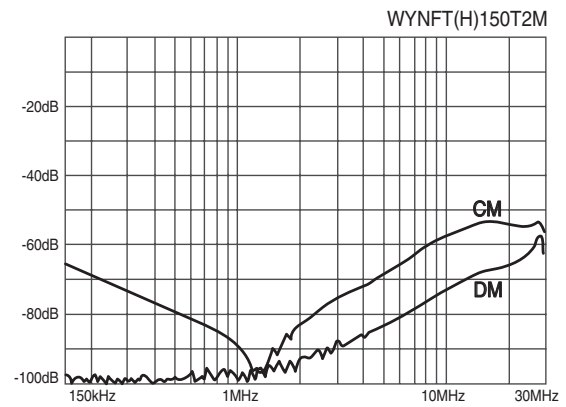
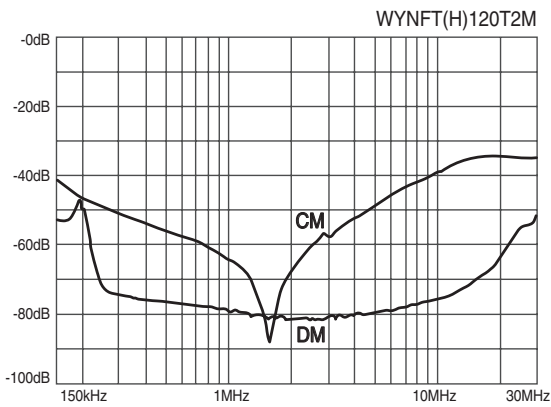
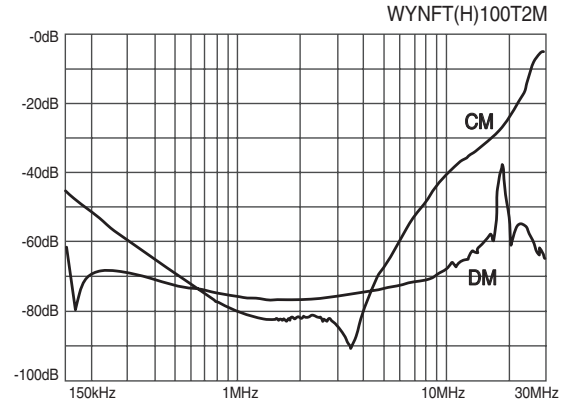
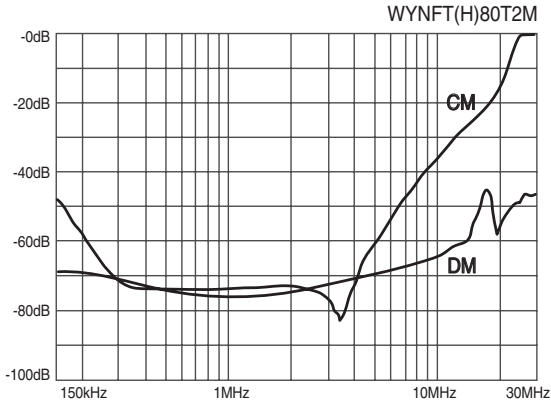
트랜스포머  
REACTOR  
리액터  
무정전압 레이어  
SSR  
전력조정기  
TPR  
스위칭파워  
SMP  
노이즈 필터  
N/F  
하모닉 필터  
H/F  
서지보호기  
SPD  
보호계전기  
RELAY  
누전경보기  
ELD = GFR  
영상변류기  
ZCT  
판넬메타  
METER  
계기용변성기  
CT = VT  
선트랜  
SHUNT = FAN

### ● Characteristics



※ CM : Common mode, DM : Differential mode

### ● Characteristics



※ CM : Common mode, DM : Differential mode

트랜스포머  
TRANSFORMER  
리액터  
REACTOR  
무정전압 레일  
SSR  
전력조정기  
TPR  
스위칭파워  
SMPS  
노이즈 필터  
N/F  
하모닉 필터  
H/F  
서지보호기  
SPD  
보호계전기  
RELAY  
누전경보기  
ELDRGF  
영상변류기  
ZCT  
판넬메타  
METER  
계기용변성기  
CT=VT  
선트랜팬  
SHUNT=FAN