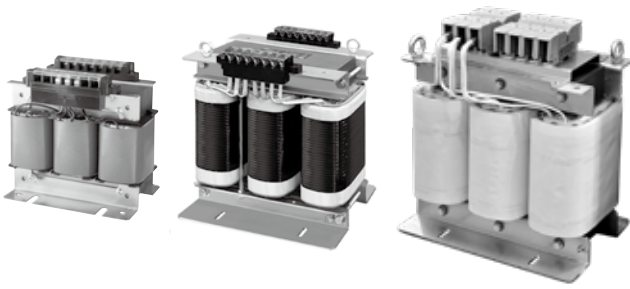


WY3P-W Series (삼상복권)



삼상 복권형으로 입력 AC 380V.440V 에 Y결선, 출력 AC220V에 Δ 결선형으로 제작 하였으며, 소형부터 대형까지 전문화된 제품으로 단자대(Terminal Block)등으로 제작 하였으며 전 모델에 대하여 CE를 획득하여 소비자의 선택의 폭을 다양화 하였으며 절연방식은 B종이며 F, H 종은 주문에 의해 제작합니다.

This transformer is three phase isolation transformer and input voltage is AC380V, 440V Y connection, output voltage is AC220V delta connection. it has terminal block system and Insulation class is B. also acquired CE certification all model from small to large capacity. insulation class F and H is available order made.

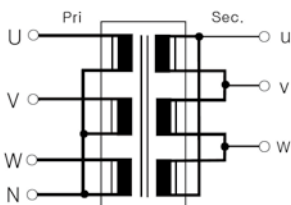
·100VA~5KVA Insulation Class B
·7.5KVA~150KVA Insulation Class H

Specifications

MODEL NO.	TYPE	SPECIFICATIONS			DIMENSIONS (mm)										WEIGHT (kg)
		PRI.(V)	SEC.(V)	VA	W	H	D	b	d	e	Ø2	M		Type	
· 3P 380V · 440V Line → 220V Line Double Winding Series (복권형)															
WY3P-100W	W3PT	△ 380-440	△ 220	100	140	127	87	103	45	10	5.5 x 10	M4	M4	A	2.6
WY3P-200W				200	140	130	100	103	60	10	5.5 x 15	M4	M4		5.0
WY3P-300W				300	155	145	108	104	90	10	5.5 x 15	M4	M4		6.0
WY3P-500W				500	190	180	105	130	90	10	5 x 15	M4	M4		8.0
WY3P-1KW				1K	195	180	126	130	109	10	5 x 15	M4	M4		13.0
WY3P-1.5KW				1.5K	240	210	145	120	115	10	10 x 20	M4	M4		18.6
WY3P-2KW				2K	240	210	145	120	115	10	10 x 20	M4	M4		20.0
WY3P-3KW				3K	275	250	175	120	130	10	10 x 20	M4	M4		30.5
WY3P-5KW				5K	330	290	190	180	160	10	10 x 20	M4	M4		45.0
WY3P-7.5KW	W3PT	△ 380-440	△ 220	7.5K	330	290	215	180	185	10	10 x 20	M4	M4	A	59.0
WY3P-10KW				10K	375	319.5	236	180	216	16	12 x 20	M4	M4		73.5
WY3P-15KW				15K	390	342	236	180	216	16	12 x 20	M6	M6		92.0
WY3P-20KW				20K	422	372	260	205	196	16	14 x 40	M6	M6		101.5
WY3P-30KW				30K	435	484	270	225	212	20	11 x 40	M6	M6		139.0
WY3P-40KW				40K	480	543	276	240	206	-	13 x 27	M6	M8		175.0
WY3P-50KW				50K	483	543	296	240	226	-	13 x 27	M6	M8		192.0
WY3P-75KW				75K	545	590	306	340	236	-	13 x 27	M8	M10		272.0
WY3P-100KW				100K	590	610	350	420	280	-	13 x 27	M8	M10		336.0
WY3P-150KW				150K	690	690	600 (372)	500	270	-	16 x 26	-	-		-

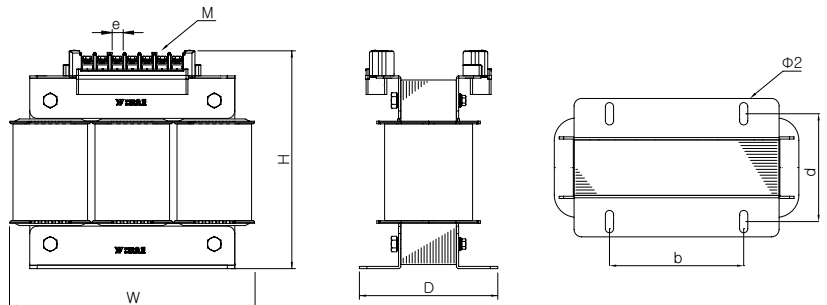
※ 3KVA 이상 "I" Bolt 부착 (Attach an "I" bolt for 3KVA or larger)

Circuit Diagram

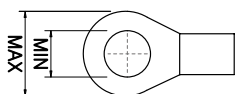


Dimension

• A Type



Terminal



100VA ~ 10kVA	Max 9, Min 4
15 ~ 30kVA	Max 15, Min 6
40 ~ 100kVA	M6 Max 23, Min 6
	M8 Max 28, Min 8
	M10 Max 39, Min 10
150kVA	Max 19, Min 8

• B Type

