



● Features

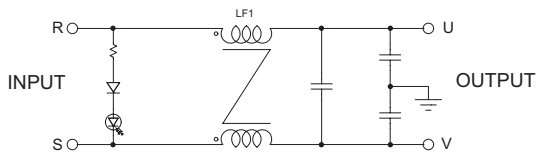
- Wide Band : High Attenuation
- Band Width : 150KHz~30MHz
- Small Size & Compact and Light Weight
- Low Leakage
- KC(안전인증) Approved by HK03001-17006A

● Specifications

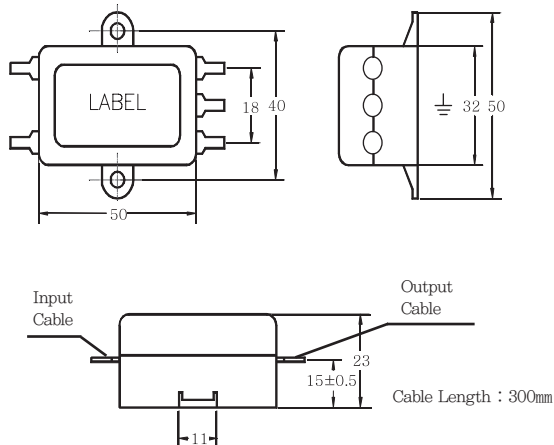
| ITEM | MODEL | SYMBOL | WYFS03L1 | WYFS06L1 |
|-----------------------|-------|--------|---|----------|
| Rated Voltage | V | | 250 | |
| Rated Current | A | | 3 | 6 |
| Frequency | Hz | | 50/60 | |
| Dielectric Withstand | V | | 1500 | |
| Insulation Resistance | MΩ | | 300 | |
| Leakage Current | mA | | 0,5 | |
| Operating Temperature | °C | | -25°C ~ +100°C [Refer to Derating Curve TYPE-1] | |
| Operating Humidity | RH | | 35~85%RH | |
| Weight | g | | 60 | |

※ Derating Curve of page 103

● Circuit Diagram



● Dimension



● Characteristics

