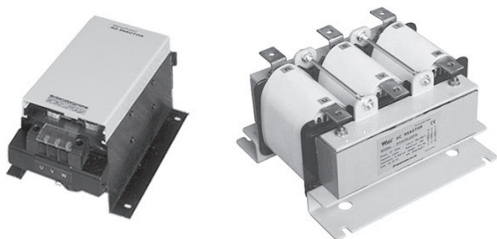


REACTOR

전원협조용 Input Reactor (AC 인버터 전단용-입력용)

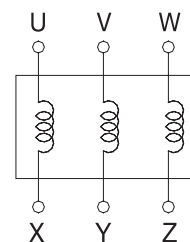
CE RoHS



● Specifications

- Rating : 3 ϕ 220V / 50/60 Hz
- Dielectric withstand : AC 3000V / 1min
- Insulation resistance : DC 500V / 100M Ω
- IP Class : IP20
- Sound level : Less than 65db
- Operating temp. : -20 $^{\circ}$ C ~ +40 $^{\circ}$ C

● Circuit Diagram



● 220V (Impedance Voltage : 4.4Vac)

MODEL	용량(kW)	정격전류 (A)	인덕턴스 (mH)	Dimensions(mm)						Type	Weight (kg)	
				W	D	H	W1	D1	ϕ E			ϕ F
WYACR2-0.75	0.75	3.4	3.43	97	185	105	82	100	6	M4	A	2.3
WYACR2-1.5	1.5	7.5	1.56	97	185	105	82	100	6	M4	A	2.5
WYACR2-2.2	2.2	15	0.776	118	195	105	104	100	6	M4	A	4.8
WYACR2-3.7	3.7	20	0.584	118	195	105	104	100	6	M4	A	5.2
WYACR2-5.5	5.5	30	0.389	118	195	105	104	100	6	M4	A	6.5
WYACR2-7.5	7.5	40	0.292	135	330	105	120	218	7	M4	A	9.0

● 220V (Impedance Voltage : 4.4Vac)

MODEL	용량(kW)	정격전류 (A)	인덕턴스 (mH)	Dimensions(mm)						Type	Weight (kg)	
				W	D	H	W1	D1	ϕ E			ϕ F
WYACR2-11	11	60	0.195	194	185	126	160	150	11	7	B	11.6
WYACR2-15	15	76	0.154	194	185	126	160	150	11	7	B	13.1
WYACR2-18.5	18.5	100	0.117	232	217	144	200	200	11	9	B	16.8
WYACR2-22	22	116	0.101	232	217	144	200	200	11	9	B	17.7
WYACR2-30	30	134	0.0871	232	217	144	200	200	11	9	B	18.2
WYACR2-37	37	164	0.0712	256	250	166	200	230	11	11	B	30.7
WYACR2-45	45	200	0.0584	256	250	166	200	230	11	11	B	30.7
WYACR2-55	55	242	0.0482	256	250	166	200	230	11	11	B	31.8
WYACR2-75	75	334	0.0349	256	250	166	200	230	11	11	B	32.5
WYACR2-90	90	402	0.0290	256	250	202	200	230	11	11	B	48.5
WYACR2-110	110	490	0.0238	300	250	215	240	225	11	13	B	52.7
WYACR2-132	132	580	0.0201	300	250	215	240	225	11	13	B	54.1
WYACR2-160	160	714	0.0163	300	250	215	240	225	11	13	B	57.4
WYACR2-185	185	840	0.0139	335	276	238	260	250	11	13	B	71.6
WYACR2-220	220	1000	0.0117	335	276	244	260	250	11	13	B	77.2
WYACR2-250	250	1120	0.0104	335	276	244	260	250	11	13	B	82.7
WYACR2-280	280	1160	0.0101	365	299	223	300	250	11	13	B	85.5
WYACR2-315	315	1420	0.00822	455	367	240	360	300	13	13	B	109.8
WYACR2-350	350	1600	0.00729	455	367	240	360	300	13	13	B	118.4

● Dimension

A Type

B Type

