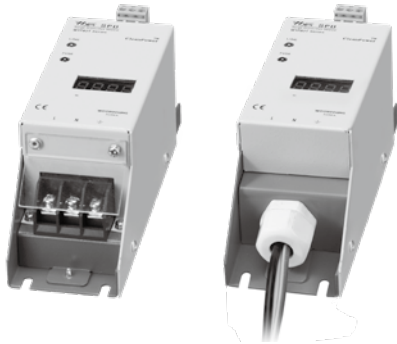


Surge Protective Device (SPD)

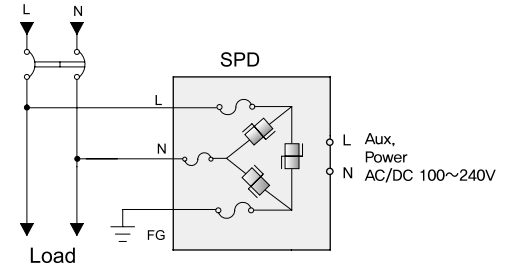


서지 낙뢰 보호기

단상접지 카운터형(1P2W) 220V Counter type 20/40kA series



● Connection



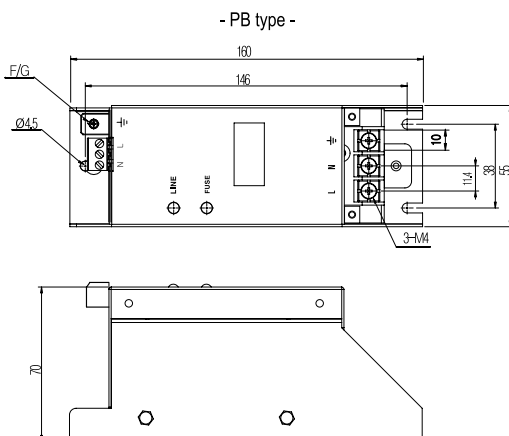
단상접지
(1phase earthed type)

● Specification

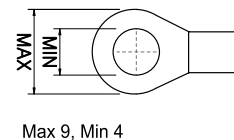
ITEM	MODEL	WYPB2020T220C / L220C	WYPB2040T220C / L220C
	Nominal voltage (Un)	Single phase 220VAC	
Aux. Power	AC / DC 100 ~ 240V		
Max. continuous operating voltage (Uc)	320VAC		
Voltage protection level (Up)	<1.2kV@20kV / 10kA (IEC61643-1)		
Rated frequency (Fo)	50 / 60Hz		
Max. discharge current (Imax)	20kA	40kA	
Nominal discharge current (In)	10kA	20kA	
Max. impulse current (Iimp)	-		
Protection level	Class II, III		
Protection mode	L-N, L-G, N-G		
Operating temperature range	-40 ~ 90°C		
Operating Humidity	35 ~ 85%RH		
Storage temperature range	-40 ~ 125°C		
Fuse	Thermal runaway fuse		
Connection type	T : Terminal type / L : Lead type		
Connection mode	Parallel connection type		
Wire size for connections	2.5mm ²	4mm ²	
Response time	< 25 nano second		
Indicator LED	Green	Power lamp	
	Red	Fuse off at lamp on (이상시 램프'on')	
Weight (kg)	0.7		

* Model type T: Terminal Type, L: Lead wire Type

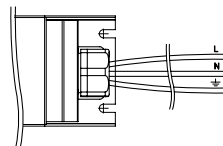
● Dimension



● Terminal



<Lead type>



20kA-KIV insulation wire 2.5mm²
40kA-KIV insulation wire 4mm²

Line	Color	Lead
L	White	60cm
N	Black	60cm
FG	Green / Yellow	1m

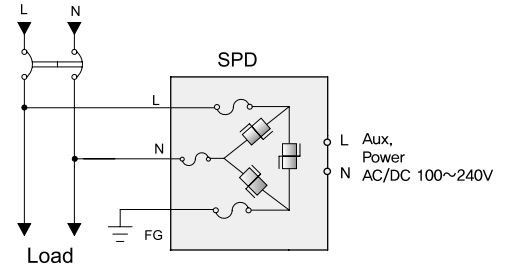
Surge Protective Device(SPD)

단상접지 카운터형(1P2W) 220V Counter type 80/100/120kA series

CE RoHS



● Connection



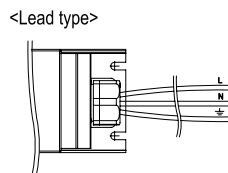
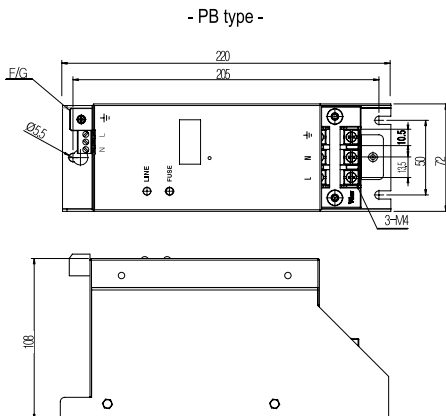
단상접지
(1phase earthed type)

● Specification

ITEM	MODEL	WYPB2080T220C / L220C WYPD2080T220C / L220C	WYPB2100T220C / L220C WYPD2100T220C / L220C	WYPB2120T220C / L220C WYPD2120T220C / L220C
Nominal voltage (Un)	Single phase 220VAC			
Aux. Power	AC / DC 100 ~ 240V			
Max. continuous operating voltage (Uc)	320VAC			
Voltage protection level (Up)	<1.2kV@20kV / 10kA (IEC61643-1)			
Rated frequency (Fo)	50 / 60Hz			
Max. discharge current (Imax)	80kA	100kA	120kA	
Nominal discharge current (In)	40kA	50kA	60kA	
Max. impulse current (Iimp)	-			
Protection level	Class II, III			
Protection mode	L-N, L-G, N-G			
Operating temperature range	-40 ~ 90°C			
Operating Humidity	35 ~ 85%RH			
Storage temperature range	-40 ~ 125°C			
Fuse	Thermal runaway fuse			
Connection type	T : Terminal type / L : Lead type			
Connection mode	Parallel connection type			
Wire size for connections	6mm ²		10mm ²	
Response time	< 25 nano second			
Indicator LED	Green	Power lamp		
	Red	Fuse off at lamp on (이상시 램프'on')		
Weight (kg)	1.8			

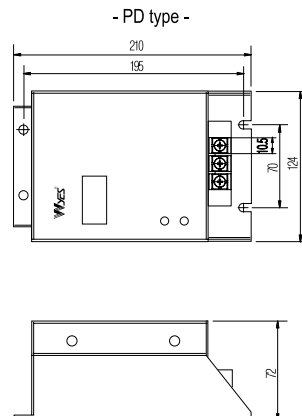
* Model type T: Terminal Type, L: Lead wire Type

● Dimension

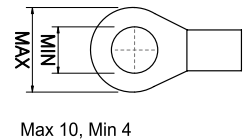


80/100kA-KIV insulation wire 6mm²
120kA-KIV insulation wire 10mm²

Line	Color	Lead
L	White	60cm
N	Black	60cm
FG	Green / Yellow	1m



● Terminal



리액터

무정전압 레일

전력조정기

스위칭파워

노이즈 필터

하모닉 필터

서지보호기

보호계전기

LED = GFI

영상변류기

패널메타

계기용 변성기

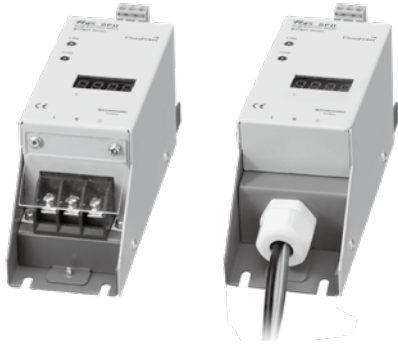
선트팬

Surge Protective Device (SPD)

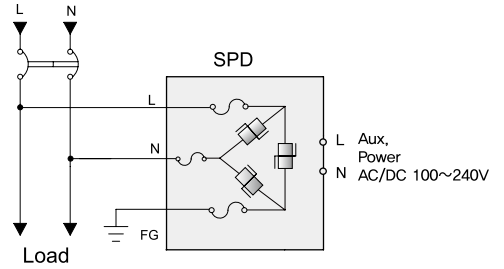


서지 낙뢰 보호기

단상접지 카운터형(1P2W) 380V, 440/480V Counter type 20/40kA series



● Connection



단상접지
(1phase earthed type)

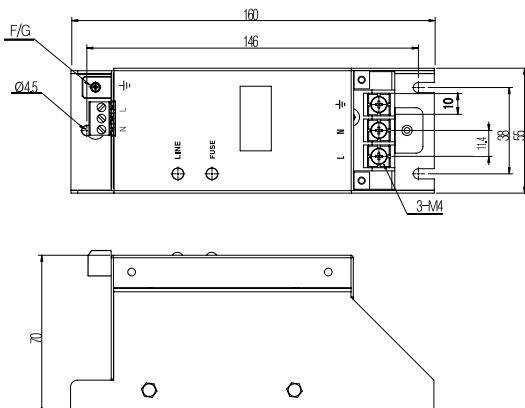
● Specification

ITEM	MODEL	WYPB2020T380C / L380C	WYPB2040T380C / L380C
		WYPB2020T440C / L440C	WYPB2040T440C / L440C
Nominal voltage (Un)		Single phase 380VAC, 440 / 480VAC	
Aux. Power		AC / DC 100 ~ 240V	
Max. continuous operating voltage (Uc)		460 / 625VAC	
Voltage protection level (Up)		<1.2kV@20kV / 10kA (IEC61643-1)	
Rated frequency (Fo)		50 / 60Hz	
Max. discharge current (Imax)		20kA	40kA
Nominal discharge current (In)		10kA	20kA
Max. impulse current (Iimp)		-	
Protection level		Class II, III	
Protection mode		L-N, L-G, N-G	
Operating temperature range		-40 ~ 90°C	
Operating Humidity		35 ~ 85%RH	
Storage temperature range		-40 ~ 125°C	
Fuse		Thermal runaway fuse	
Connection type		T : Terminal type / L : Lead type	
Connection mode		Parallel connection type	
Wire size for connections		2.5mm ²	4mm ²
Response time		< 25 nano second	
Indicator LED	Green	Power lamp	
	Red	Fuse off at lamp on (이상시 램프'on')	
Weight (kg)		0.7	

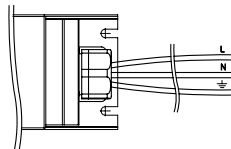
* Model type T: Terminal Type, L: Lead wire Type

● Dimension

- PB type -



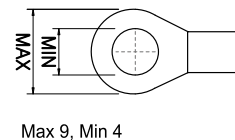
<Lead type>



20kA-KIV insulation wire 2.5mm²
40kA-KIV insulation wire 4mm²

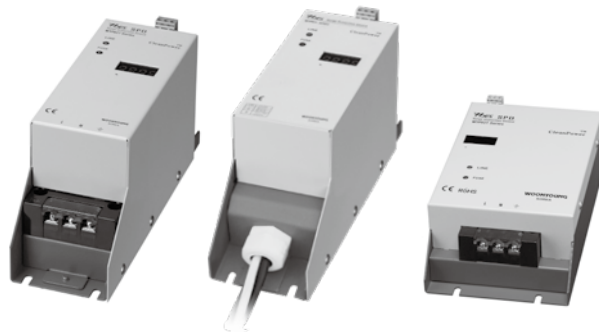
Line	Color	Lead
L	White	60cm
N	Black	60cm
⊥	Green / Yellow	1m

● Terminal

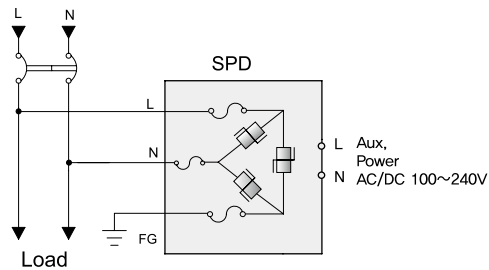


Surge Protective Device(SPD)

단상접지 카운터형(1P2W) 380V, 440/480V Counter type 80/100/120kA series



● Connection



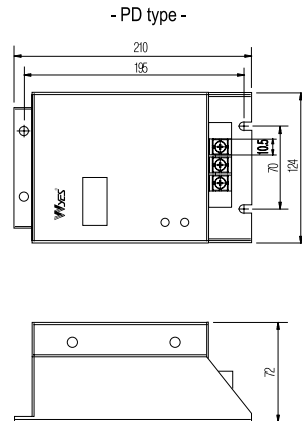
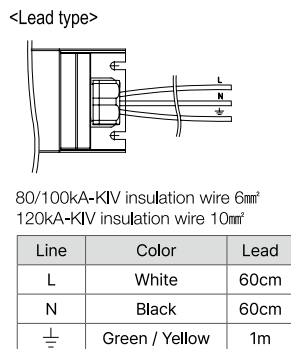
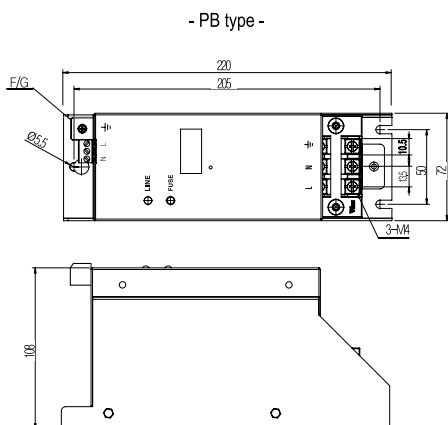
단상접지
(1phase earthed type)

● Specification

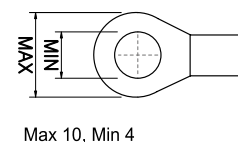
ITEM	MODEL	WYPB2080T380C / L380C	WYPB2100T380C / L380C	WYPB2120T380C / L380C
		WYPB2080T440C / L440C	WYPB2100T440C / L440C	WYPB2120T440C / L440C
Nominal voltage (Un)		Single phase 380VAC, 440 / 480VAC		
Aux. Power		AC / DC 100 ~ 240V		
Max. continuous operating voltage (Uc)		460 / 625VAC		
Voltage protection level (Up)		<1.2kV@20kV / 10kA (IEC61643-1)		
Rated frequency (Fo)		50 / 60Hz		
Max. discharge current (Imax)		80kA	100kA	120kA
Nominal discharge current (In)		40kA	50kA	60kA
Max. impulse current (Iimp)		-		
Protection level		Class II, III		
Protection mode		L-N, L-G, N-G		
Operating temperature range		-40 ~ 90°C		
Operating Humidity		35 ~ 85%RH		
Storage temperature range		-40 ~ 125°C		
Fuse		Thermal runaway fuse		
Connection type		T : Terminal type / L : Lead type		
Connection mode		Parallel connection type		
Wire size for connections		6mm ²		10mm ²
Response time		< 25 nano second		
Indicator LED	Green	Power lamp		
	Red	Fuse off at lamp on (이상시 램프'on')		
Weight (kg)		1.8		

* Model type T : Terminal Type, L : Lead wire Type

● Dimension



● Terminal



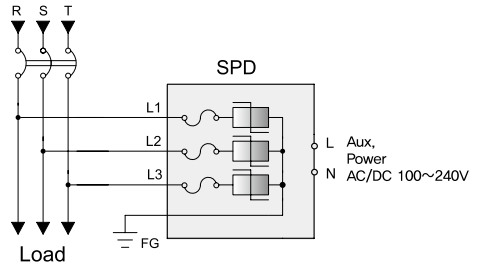
Surge Protective Device (SPD)

삼상접지 카운터형(3P3W) 220V Counter type 20/40kA series

CE RoHS



● Connection



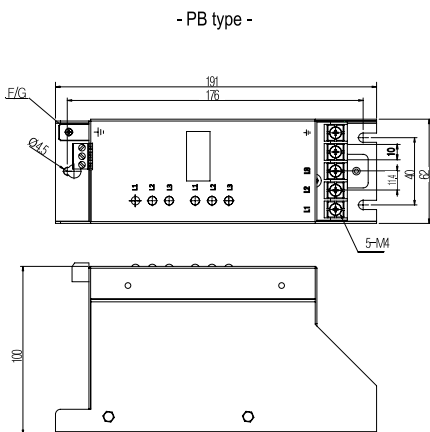
삼상접지
(3phase earthed type)

● Specification

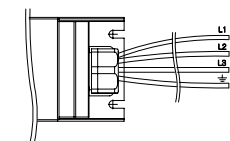
ITEM	MODEL	WYPB3020T220C WYPB3020L220C	WYPB3040T220C WYPB3040L220C
			WYPD3020T220C WYPD3020L220C
Nominal voltage (Un)	Three phase 220VAC		
Aux, Power	AC / DC 100 ~ 240V		
Max. continuous operating voltage (Uc)	320VAC		
Voltage protection level (Up)	<1.2kV@20kV / 10kA (IEC61643-1)		
Rated frequency (Fo)	50 / 60Hz		
Max. discharge current (Imax)	20kA	40kA	
Nominal discharge current (In)	10kA	20kA	
Max. impulse current (Iimp)	-		
Protection level	Class II, III		
Protection mode	L-L, L-G		
Operating temperature range	-40 ~ 90°C		
Operating Humidity	35 ~ 85%RH		
Storage temperature range	-40 ~ 125°C		
Fuse	Thermal runaway fuse		
Connection type	T : Terminal type / L : Lead type		
Connection mode	Parallel connection type		
Wire size for connections	2.5mm ²	4mm ²	
Response time	< 25 nano second		
Indicator LED	Green	Power lamp	
	Red	Fuse off at lamp on (이상시 램프'on')	
Weight (kg)	1.1		

*Model type T: Terminal Type, L: Lead wire Type

● Dimension

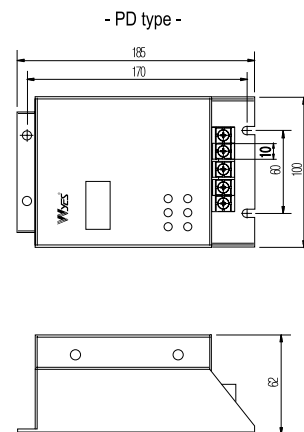


<Lead type>

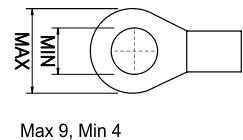


20kA-KIV insulation wire 2.5mm²
40kA-KIV insulation wire 4mm²

Line	Color	Lead
L1	Red	60cm
L2	White	60cm
L3	Blue	60cm
FG	Green / Yellow	1m



● Terminal



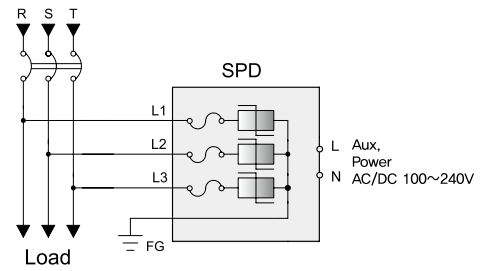
Surge Protective Device(SPD)

삼상접지 카운터형(3P3W) 220V Counter type 80~240kA series

CE RoHS



● Connection



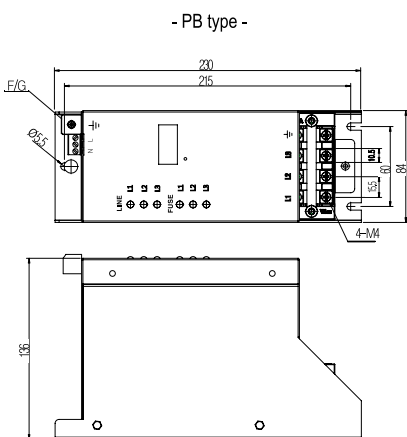
삼상접지
(3phase earthed type)

● Specification

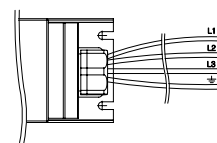
ITEM	MODEL	WYPB3080T220C WYPB3080L220C	WYPB3100T220C WYPB3100L220C	WYPB3120T220C WYPB3120L220C	WYPB3160T220C WYPB3160L220C	WYPB3200T220C WYPB3200L220C	WYPB3240T220C WYPB3240L220C
			WYPD3080T220C WYPD3080L220C	WYPD3100T220C WYPD3100L220C	WYPD3120T220C WYPD3120L220C	WYPD3160T220C WYPD3160L220C	WYPD3200T220C WYPD3200L220C
Nominal voltage (Un)	Three phase 220VAC						
Aux, Power	AC / DC 100 ~ 240V						
Max. continuous operating voltage (Uc)	320VAC						
Voltage protection level (Up)	<2.1kV@20kV / 10kA (IEC61643-1)						
Rated frequency (Fo)	50 / 60Hz						
Max. discharge current (Imax)	80kA	100kA	120kA	160kA	200kA	240kA	
Nominal discharge current (In)	40kA	50kA	60kA	80kA	100kA	120kA	
Max. impulse current (Iimp)	-					12.5kA	
Protection level	Class II, III					Class I, II, III	
Protection mode	L-L, L-G						
Operating temperature range	-40 ~ 90°C						
Operating Humidity	35 ~ 85%RH						
Storage temperature range	-40 ~ 125°C						
Fuse	Thermal runaway fuse						
Connection type	T : Terminal type / L : Lead type						
Connection mode	Parallel connection type						
Wire size for connections	6mm ²			10mm ²			
Response time	< 25 nano second						
Indicator LED	Green	Power lamp					
	Red	Fuse off at lamp on (이상시 램프'on')					
Weight (kg)	2.3						

* Model type T: Terminal Type, L: Lead wire Type

● Dimension



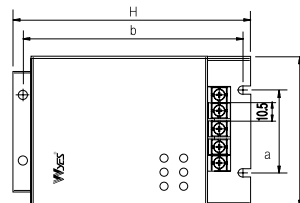
<Lead type>



80/100kA-KIV insulation wire 6mm²
120/160/200/240kA-KIV insulation wire 10mm²

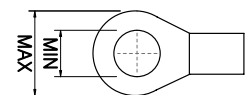
Line	Color	Lead
L1	Red	60cm
L2	White	60cm
L3	Blue	60cm
⊥	Green / Yellow	1m

- PD type -



Type	W	H	D	a	b
80~100kA	120	190	70	70	175
120~240kA	135	230	84	70	215

● Terminal



Max 10, Min 4

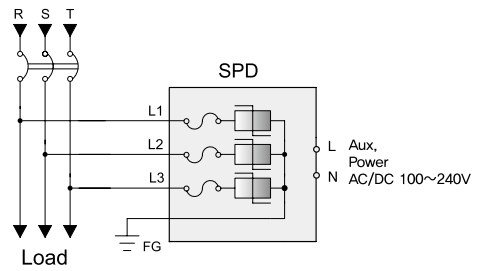
트랜스포머
SSR
전력조정기
스위칭파워
노이즈필터
하모닉필터
서지보호기
보호계전기
LED=GF
영상변류기
판넬메타
계용변성기
선트랜

Surge Protective Device (SPD)

삼상접지 카운터형(3P3W) 380V, 440/480V Counter type 20/40kA series



● Connection



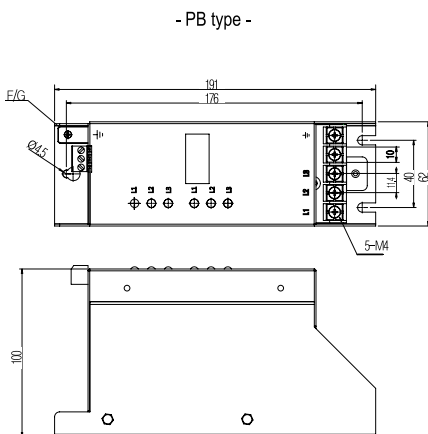
삼상접지
(3phase earthed type)

● Specification

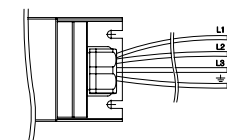
ITEM	MODEL	WYPB3020T380C / L380C WYPB3020T440C / L440C	WYPB3040T380C / L380C WYPB3040T440C / L440C
	Nominal voltage (Un)		Three phase 380VAC, 440 / 480VAC
Aux. Power		AC / DC 100 ~ 240V	
Max. continuous operating voltage (Uc)		460 / 625VAC	
Voltage protection level (Up)		<1.2kV@20kV / 10kA (IEC61643-1)	
Rated frequency (Fo)		50 / 60Hz	
Max. discharge current (Imax)		20kA	40kA
Nominal discharge current (In)		10kA	20kA
Max. impulse current (Iimp)		-	
Protection level		Class II, III	
Protection mode		L-L, L-G	
Operating temperature range		-40 ~ 90°C	
Operating Humidity		35 ~ 85%RH	
Storage temperature range		-40 ~ 125°C	
Fuse		Thermal runaway fuse	
Connection type		T : Terminal type / L : Lead type	
Connection mode		Parallel connection type	
Wire size for connections		2.5mm ²	4mm ²
Response time		< 25 nano second	
Indicator LED	Green	Power lamp	
	Red	Fuse off at lamp on (이상시 램프'on')	
Weight (kg)		1.1	

*Model type T : Terminal Type, L : Lead wire Type

● Dimension



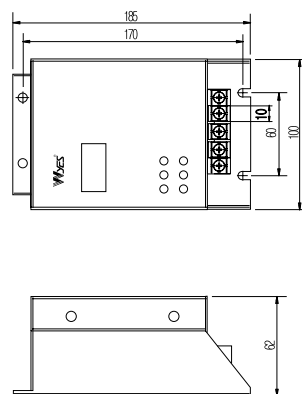
<Lead type>



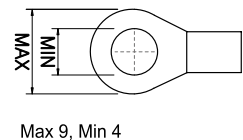
20kA-KIV insulation wire 2.5mm²
40kA-KIV insulation wire mm²

Line	Color	Lead
L1	Red	60cm
L2	White	60cm
L3	Blue	60cm
⊥	Green / Yellow	1m

- PD type -



● Terminal



Max 9, Min 4

트랜스포머
RANS=NC
리액터
무정전압 레이어
전력조정기
스위칭파워
노이즈 필터
하모닉 필터
서지보호기
보호계전기
누전경보기
영상변류기
패널메타
계기용 변성기
선트랜팬

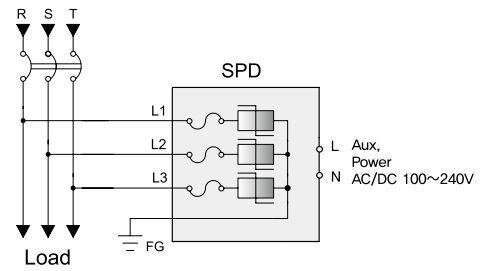
Surge Protective Device(SPD)

삼상접지 카운터형(3P3W) 380V, 440/480V Counter type 80~240kA series

CE RoHS



● Connection



삼상접지
(3phase earthed type)

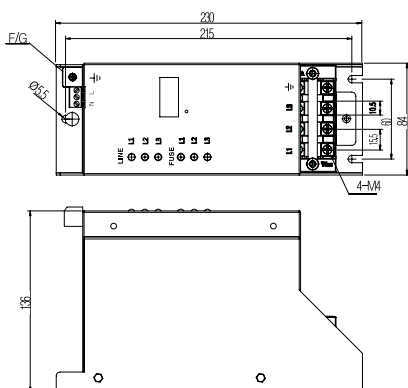
● Specification

ITEM	MODEL	WYPB3080T380C/L380C WYPB3080T440C/L440C	WYPB3100T380C/L380C WYPB3100T440C/L440C	WYPB3120T380C/L380C WYPB3120T440C/L440C	WYPB3160T380C/L380C WYPB3160T440C/L440C	WYPB3200T380C/L380C WYPB3200T440C/L440C	WYPB3240T380C/L380C WYPB3240T440C/L440C	
	MODEL	WYPD3080T380C/L380C WYPD3080T440C/L440C	WYPD3100T380C/L380C WYPD3100T440C/L440C	WYPD3120T380C/L380C WYPD3120T440C/L440C	WYPD3160T380C/L380C WYPD3160T440C/L440C	WYPD3200T380C/L380C WYPD3200T440C/L440C	WYPD3240T380C/L380C WYPD3240T440C/L440C	
Nominal voltage (Un)	Three phase 380VAC, 440/480VAC							
Aux, Power	AC/DC 100~240V							
Max. continuous operating voltage (Uc)	460/625VAC							
Voltage protection level (Up)	<2.1kV@20kV/10kA (IEC61643-1)							
Rated frequency (Fo)	50/60Hz							
Max. discharge current (Imax)	80kA	100kA	120kA	160kA	200kA	240kA		
Nominal discharge current (In)	40kA	50kA	60kA	80kA	100kA	120kA		
Max. impulse current (Iimp)	-					12.5kA		
Protection level	Class II, III					Class I, II, III		
Protection mode	L-L, L-G							
Operating temperature range	-40~90°C							
Operating Humidity	35~85%RH							
Storage temperature range	-40~125°C							
Fuse	Thermal runaway fuse							
Connection type	T : Terminal type / L : Lead type							
Connection mode	Parallel connection type							
Wire size for connections	6mm ²			10mm ²				
Response time	< 25 nano second							
Indicator LED	Green	Power lamp						
	Red	Fuse off at lamp on (이상시 램프'on')						
Weight (kg)	2.3							

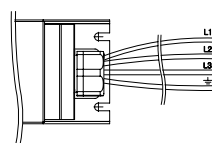
* Model type T: Terminal Type, L: Lead wire Type

● Dimension

- PB type -



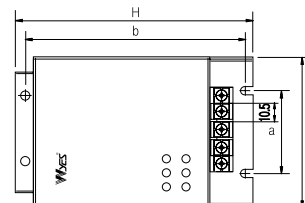
<Lead type>



80/100kA-KIV insulation wire 6mm²
120/160/200/240kA-KIV insulation wire 10mm²

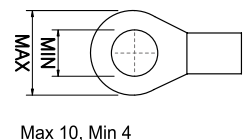
Line	Color	Lead
L1	Red	60cm
L2	White	60cm
L3	Blue	60cm
FG	Green / Yellow	1m

- PD type -



Type	W	H	D	a	b
80~100kA	120	190	70	70	175
120~240kA	135	230	84	70	215

● Terminal



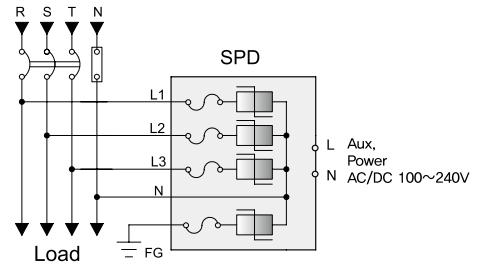
Surge Protective Device (SPD)

삼상N접지 카운터형(3P4W) 380V N-earthed counter type 20/40kA series

CE RoHS



● Connection



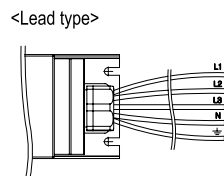
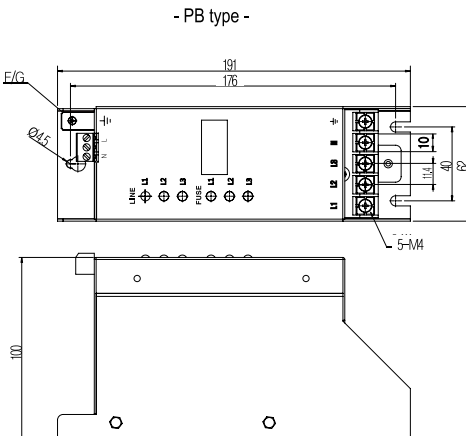
삼상N접지
(3phase N-earthed type)

● Specification

ITEM	MODEL	WYPB4020T380C	WYPB4040T380C
		WYPB4020L380C	WYPB4040L380C
		WYPD4020T380C	WYPD4040T380C
		WYPD4020L380C	WYPD4040L380C
Nominal voltage (Un)		Three phase 380VAC	
Aux. Power		AC / DC 100 ~ 240V	
Max. continuous operating voltage (Uc)		640VAC	
Voltage protection level (Up)	L-N, N-G	<1.2kV@20kV / 10kA (IEC61643-1)	
	L-L, L-G	<2.1kV@20kV / 10kA (IEC61643-1)	
Rated frequency (Fo)		50 / 60Hz	
Max. discharge current (Imax)		20kA	40kA
Nominal discharge current (In)		10kA	20kA
Max. impulse current (Iimp)		-	
Protection level		Class II, III	
Protection mode		L-N, N-G, L-L, L-G	
Operating temperature range		-40 ~ 90°C	
Operating Humidity		35 ~ 85%RH	
Storage temperature range		-40 ~ 125°C	
Fuse		Thermal runaway fuse	
Connection type		T : Terminal type / L : Lead type	
Connection mode		Parallel connection type	
Wire size for connections		2.5mm ²	4mm ²
Response time		< 25 nano second	
Indicator LED	Green	Power lamp	
	Red	Fuse off at lamp on (이상시 램프'on')	
Weight (kg)		1.1	

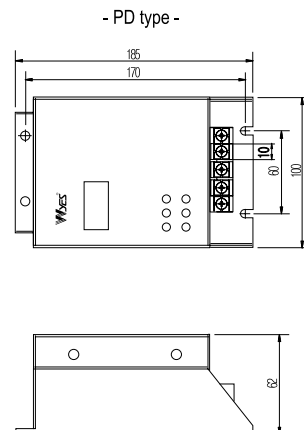
*Model type T: Terminal Type, L: Lead wire Type

● Dimension

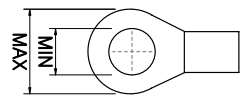


20kA-KIV insulation wire 2.5mm²
40kA-KIV insulation wire 4mm²

Line	Color	Lead
L1	Red	60cm
L2	White	60cm
L3	Blue	60cm
N	Black	60cm
FG	Green / Yellow	1m



● Terminal

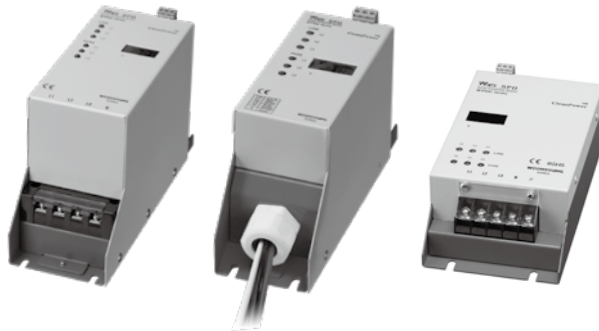


Max 9, Min 4

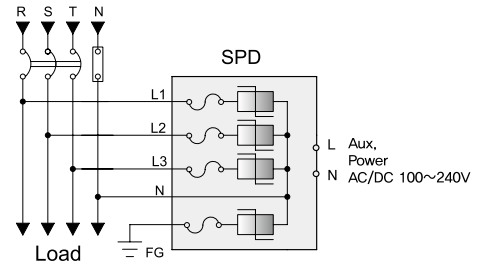
Surge Protective Device(SPD)

삼상N접지 카운터형(3P4W) 380V Counter type 80~240kA series

CE RoHS



● Connection



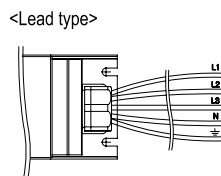
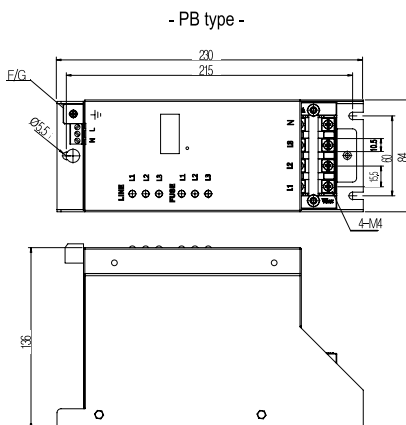
삼상N접지
(3Phase N-earthed type)

● Specification

ITEM	MODEL	WYPB4080T380C	WYPB4100T380C	WYPB4120T380C	WYPB4160T380C	WYPB4200T380C	WYPB4240T380C	
		WYPB4080L380C	WYPB4100L380C	WYPB4120L380C	WYPB4160L380C	WYPB4200L380C	WYPB4240L380C	
Nominal voltage (Un)	Three phase 380VAC							
Aux, Power	AC / DC 100 ~ 240V							
Max. continuous operating voltage (Uc)	640VAC							
Voltage protection level (Up)	L-N, N-G	<1.2kV@20kV / 10kA (IEC61643-1)						
	L-L, L-G	<2.1kV@20kV / 10kA (IEC61643-1)						
Rated frequency (Fo)	50 / 60Hz							
Max. discharge current (Imax)	80kA	100kA	120kA	160kA	200kA	240kA		
Nominal discharge current (In)	40kA	50kA	60kA	80kA	100kA	120kA		
Max. impulse current (Iimp)	-					12.5kA		
Protection level	Class II, III					Class I, II, III		
Protection mode	L-N, N-G, L-L, L-G							
Operating temperature range	-40 ~ 90°C							
Operating Humidity	35 ~ 85%RH							
Storage temperature range	-40 ~ 125°C							
Fuse	Thermal runaway fuse							
Connection type	T : Terminal type / L : Lead type							
Connection mode	Parallel connection type							
Wire size for connections	6mm ²			10mm ²				
Response time	< 25 nano second							
Indicator LED	Green	Power lamp						
	Red	Fuse off at lamp on (이상시 램프'on')						
Weight (kg)	2.3							

*Model type T : Terminal Type, L : Lead wire Type

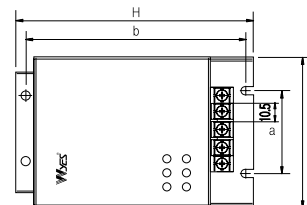
● Dimension



80/100kA-KIV insulation wire 6mm²
120/160/200/240kA-KIV insulation wire 10mm²

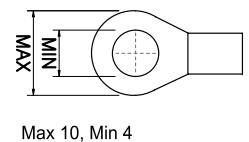
Line	Color	Lead
L1	Red	60cm
L2	White	60cm
L3	Blue	60cm
N	Black	60cm
FG	Green / Yellow	1m

- PD type -



Type	W	H	D	a	b
80~100kA	120	190	70	70	175
120~240kA	135	230	84	70	215

● Terminal



T R A N S = N C
 트랜스포머
 리액터
 무전압릴레이
 S S R
 전력조정기
 T P R
 스위칭파워
 S M P S
 노이즈필터
 N / F
 하모닉필터
 H / F
 서지보호기
 S P D
 보호계전기
 R E L A Y
 누전경보기
 E L D = G F R
 영상변류기
 Z C T
 판넬메타
 M E T E R
 계기용변성기
 C T = V T
 션트팬
 S H U N T = F A N