



● Features

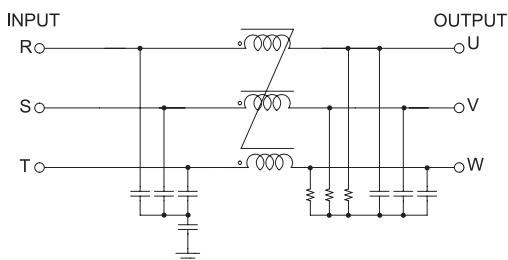
- Wide Band : High Attenuation
- Band Width : 150KHz ~ 30MHz
- Low Leakage
- RoHS Compliant

● Specifications

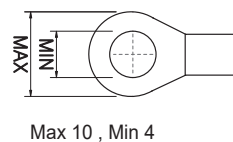
ITEM	MODEL	SYMBOL	WYFTH40T2B	WYFTH50T2B
Rated Voltage	V		500	
Rated Current	A		40	50
Frequency	Hz		50 / 60	
Dielectric Withstand	V		2500VAC or 2800VDC for 1 minute(Line-Case)	
Insulation Resistance	M.Ω		500	
Leakage Current	mA		1.2	
Operating Temperature	°C		-25°C ~ +100°C [Refer to Derating Curve TYPE-2]	
Operating Humidity	RH		35 ~ 85%RH	
Weight	kg		1.2	

※ Derating Curve of page 519

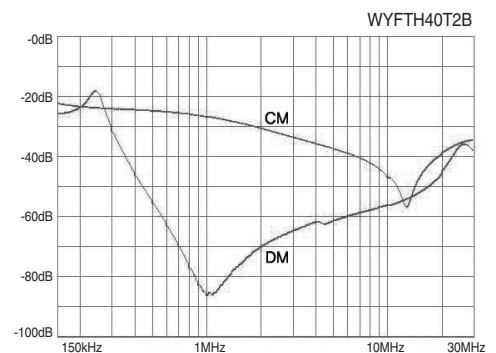
● Circuit Diagram



● Terminal



● Characteristics



● Dimension

