

NOISE FILTER

N Series 3Ø 250V 고감쇄형 Multi-Stage Type

UL 인증



● Features

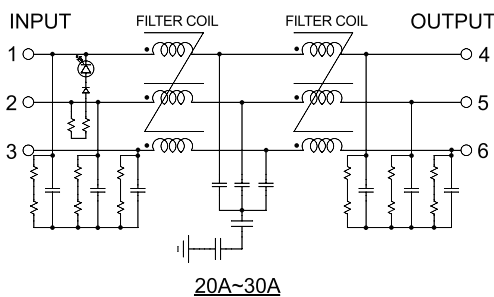
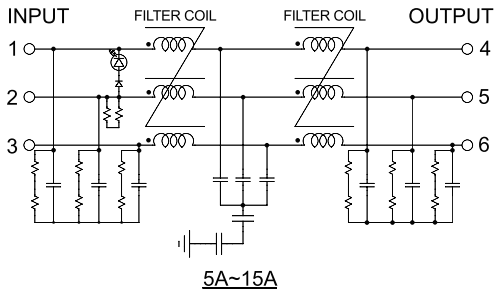
- Wide Band : High Attenuation
- Band Width : 150KHz~30MHz
- RoHS Compliant
- Inverter Output Type : Model Type"C"
(WYNFT05T2C)

● Specifications

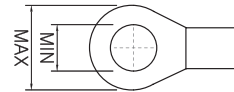
ITEM	MODEL	SYMBOL	WYNFT05T2M	WYNFT10T2M	WYNFT15T2M	WYNFT20T2M	WYNFT30T2M
Rated Voltage	V		250Vac				
Rated Current	A		5A	10A	15A	20A	30A
Frequency	Hz		50/60				
Dielectric Withstand	V		2000Vac for 1 minute or 1075Vdc for 1 minute				
Insulation Resistance	MΩ		DC 100MΩ at the 500Vdc				
Leakage Current	mA		≤2.5mA at the 250Vac				
Operating Temperature	°C		-25°C ~ +100°C [Refer to Derating Curve TYPE-2]				
Operating Humidity	RH		35~85%RH				
Weight	kg		1.2			2.2	

※ Derating Curve of page 103

● Circuit Diagram

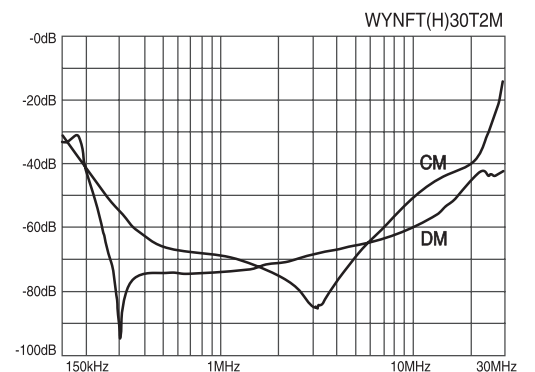
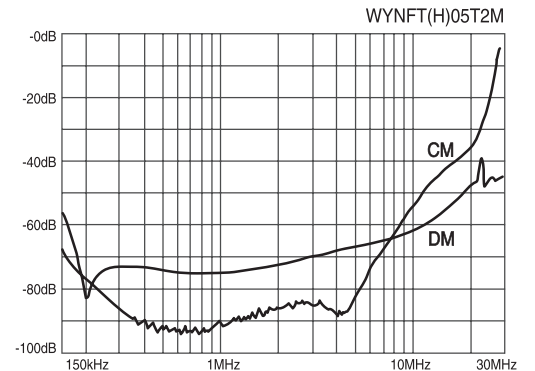


● Terminal

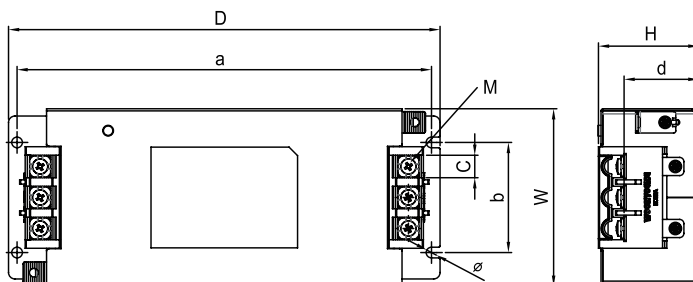


Max 10, Min 4 (5~15A)
Max 12, Min 5 (20~30A)

● Characteristics



● Dimension



MODEL	W	H	D	a	b	c	d	M	Ø
WYNFT5~15T2M	83	47	202	194	51.5	10.5	35	4	5
WYNFT20~30T2M	95	50.3	242	232	60	13	35.5	5	5

NOISE FILTER

N Series 3Ø 250V 고감쇄형 Multi-Stage Type

UL 인증



● Features

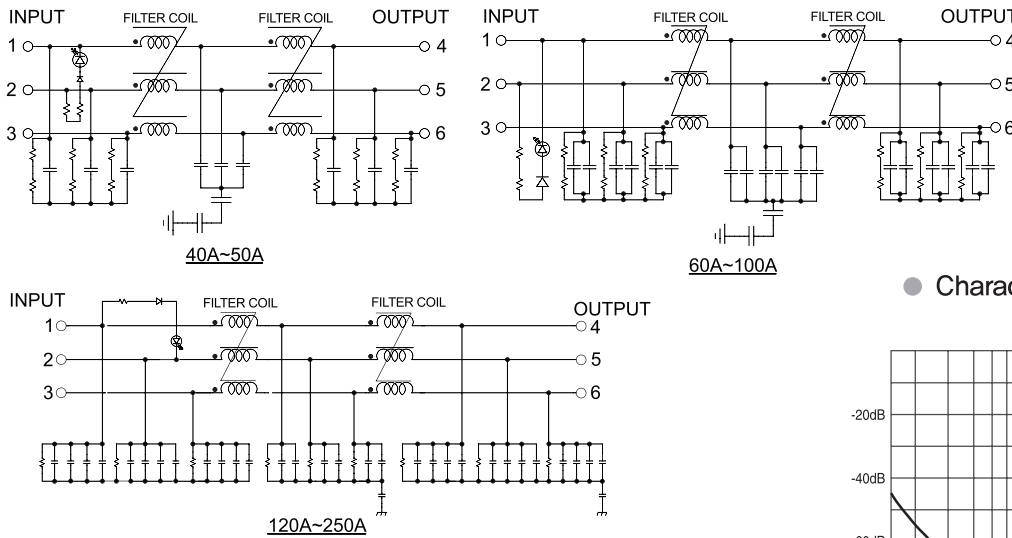
- Wide Band : High Attenuation
- Band Width : 150kHz~30MHz
- RoHS Compliant
- Inverter Output Type : Model Type"C"
(WYNFT40T2C)

● Specifications

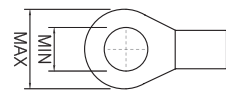
ITEM	MODEL	SYMBOL	WYNF T40T2M	WYNF T50T2M	WYNF T60T2M	WYNF T80T2M	WYNF T100T2M	WYNF T120T2M	WYNF T150T2M	WYNF T200T2M	WYNF T250T2M
Rated Voltage	V		250Vac								
Rated Current	A		40A	50A	60A	80A	100A	120A	150A	200A	250A
Frequency	Hz		50/60								
Dielectric Withstand	V		2000Vac for 1 minute or 1075Vdc for 1 minute								
Insulation Resistance	MΩ		DC 100MΩ at the 500Vdc								
Leakage Current	mA		≤2.5mA at the 250Vac						≤16mA at the 250Vac		
Operating Temperature	°C		-25°C ~ +100°C [Refer to Derating Curve TYPE-2]								
Operating Humidity	RH		35~85%RH								
Weight	kg		2,2			3,5			4,5		

※ Derating Curve of page 103

● Circuit Diagram

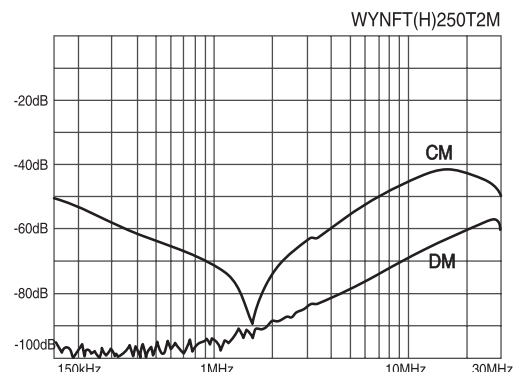
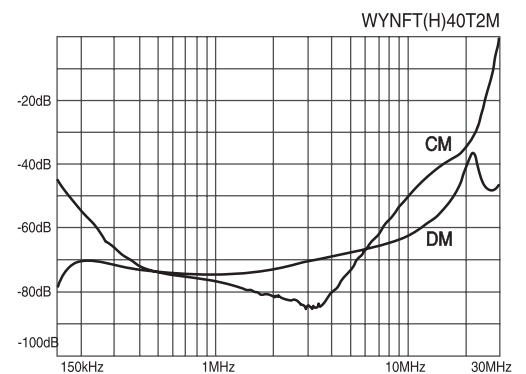


● Terminal

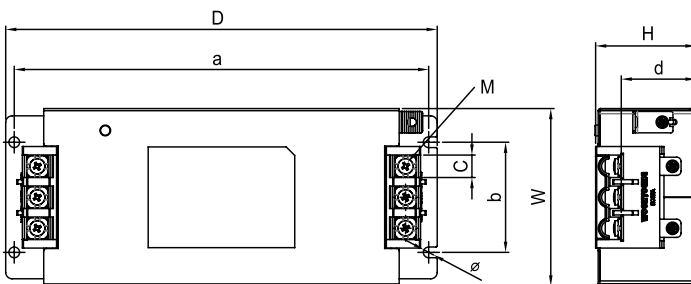


Max 16, Min 6 (40~50A)
Max 23, Min 8 (60~100A)
Max 28, Min 8 (120~250A)

● Characteristics



● Dimension



MODEL	W	H	D	a	b	c	d	M	Ø
WYNFT40~50T2M	109	61.2	295	284.5	74	17	46	6	5
WYNFT60~100T2M	137	76.9	380	368	96	24	59.7	8	5
WYNFT120~250T2M	171.6	151.6	445.4	416	140	28.5	120.1	8	6.5

TRANS=NCCT
트랜스포머
리액터
REACTOR
무정전압블레이
SSR
전력조정기
TPR
스위칭파워
SMP
노이즈 필터
N/F
하모닉 필터
H/F
서지보호기
SPD
보호계전기
RELAY
누전경보기
ELD=GFRR
영상변류기
ZCT
판넬메타
METER
계기용 변류기
CT=VVT
선트판
SHUNT=FAFAN

NOISE FILTER

N Series 3Ø 500V 고감쇄형 Multi-Stage Type

UL 인증



Specifications

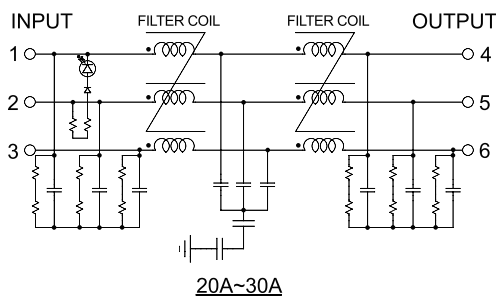
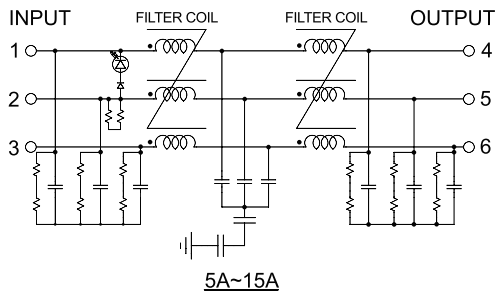
ITEM	MODEL	SYMBOL	WYNFTH05T2M	WYNFTH10T2M	WYNFTH15T2M	WYNFTH20T2M	WYNFTH30T2M
Rated Voltage	V		500Vac				
Rated Current	A		5A	10A	15A	20A	30A
Frequency	Hz		50/60				
Dielectric Withstand	V		2500Vac for 1 minute or 2150Vdc for 1 minute				
Insulation Resistance	MΩ		DC 100MΩ at the 500Vdc				
Leakage Current	mA		≤5mA at the 500Vac				
Operating Temperature	°C		-25°C ~ +100°C [Refer to Derating Curve TYPE-2]				
Operating Humidity	RH		35~85%RH				
Weight	kg		1.2		2.2		

Features

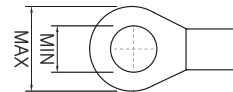
- Wide Band : High Attenuation
- Band Width : 150KHz~30MHz
- RoHS Compliant
- Inverter Output Type : Model Type"C"
(WYNFTH05T2C)

Circuit Diagram

※ Derating Curve of page 103

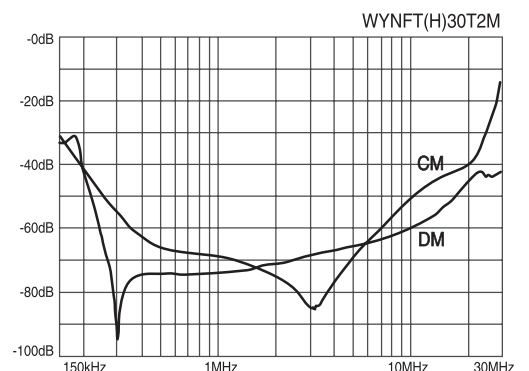
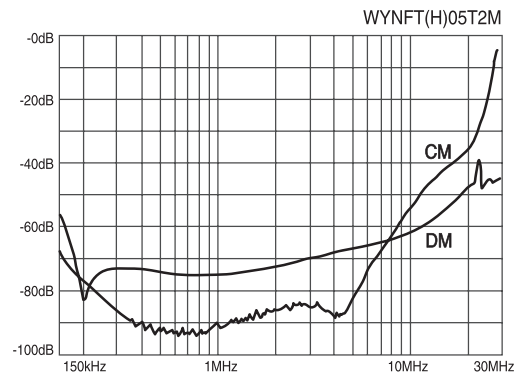


Terminal

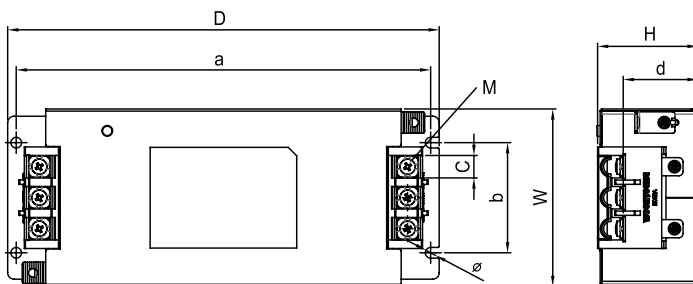


Max 10, Min 4 (5~15A)
Max 12, Min 5 (20~30A)

Characteristics



Dimension



MODEL	W	H	D	a	b	c	d	M	Ø
WYNFTH5~15T2M	83	47	202	194	51.5	10.5	35	4	5
WYNFTH20~30T2M	95	50.3	242	232	60	13	35.5	5	5

TRANS=NOCT
트랜스포머
리액터
REACTOR
무정전압블레이
SSR
전력조정기
TPR
스위칭파워
SMP
노이즈 필터
N/F
하모닉 필터
H/F
서지보호기
SPD
보호계전기
RELAY
누전경보기
ELD=GF
영상변류기
ZCT
판넬메타
METER
계기용변성기
CT=VT
선트판
SHUNT=FA

NOISE FILTER

N Series 3Ø 500V 고감쇄형 Multi-Stage Type

UL 인증



● Features

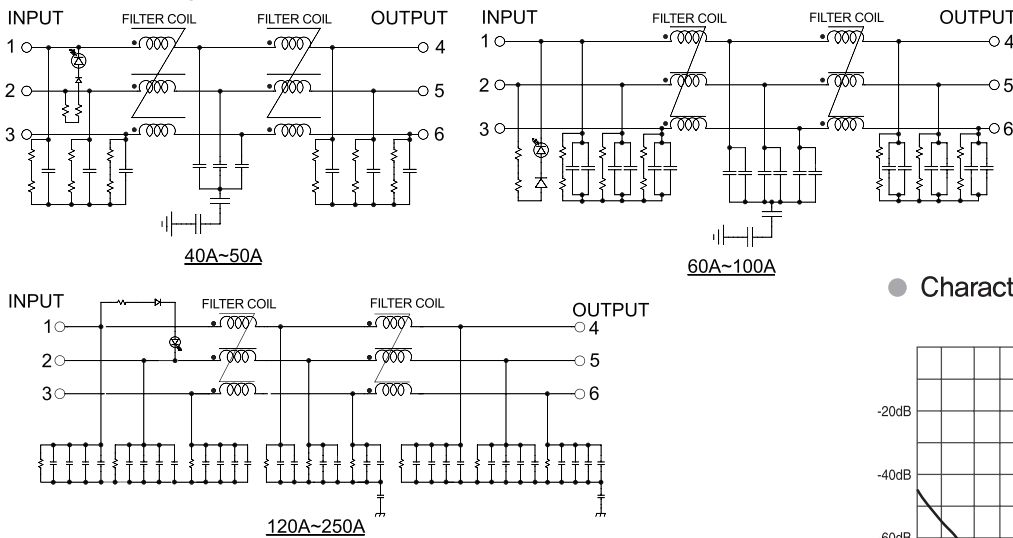
- Wide Band : High Attenuation
- Band Width : 150kHz~30MHz
- RoHS Compliant
- Inverter Output Type : Model Type"C"
(WYNFTH40T2C)

● Specifications

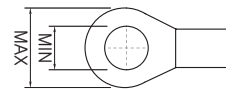
ITEM	MODEL	SYMBOL	WYNF TH40T2M	WYNF TH50T2M	WYNF TH60T2M	WYNF TH80T2M	WYNF TH100T2M	WYNF TH120T2M	WYNF TH150T2M	WYNF TH200T2M	WYNF TH250T2M
Rated Voltage	V		500Vac								
Rated Current	A		40A	50A	60A	80A	100A	120A	150A	200A	250A
Frequency	Hz		50/60								
Dielectric Withstand	V		2500Vac for 1 minute or 2150Vdc for 1 minute								
Insulation Resistance	MΩ		DC 100MΩ at the 500Vdc								
Leakage Current	mA		≤5mA at the 500Vac						≤26mA at the 500Vac		
Operating Temperature	°C		-25°C ~ +100°C [Refer to Derating Curve TYPE-2]								
Operating Humidity	RH		35~85%RH								
Weight	kg		2,2			3,5			4,5		

※ Derating Curve of page 103

● Circuit Diagram

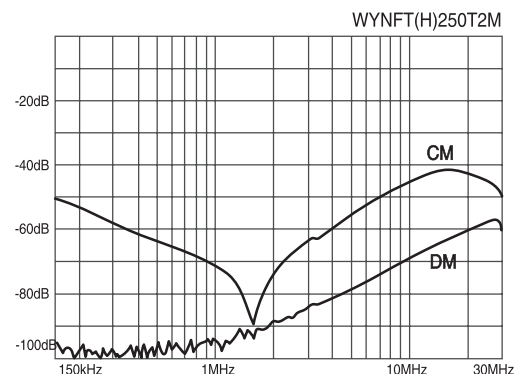
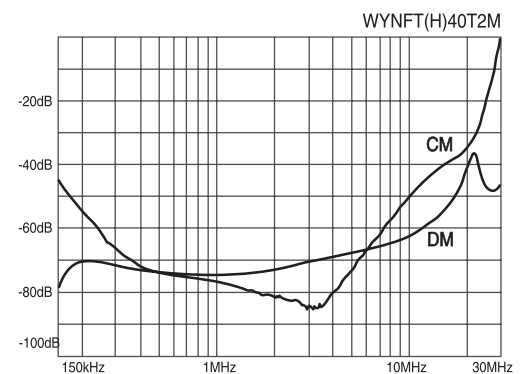


● Terminal

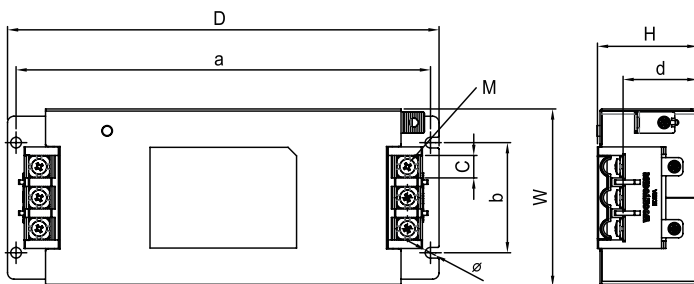


Max 16, Min 6 (40~50A)
Max 23, Min 8 (60~100A)
Max 28, Min 8 (120~250A)

● Characteristics

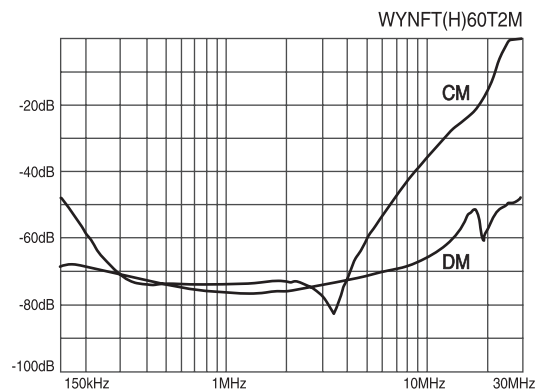
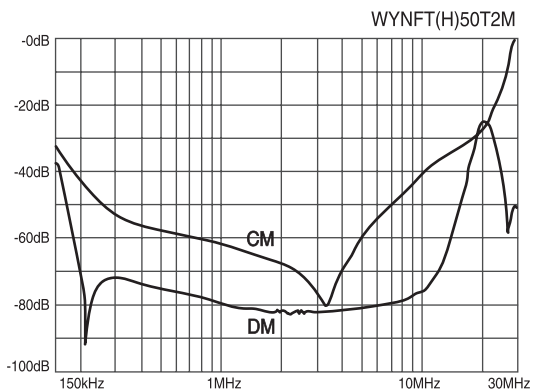
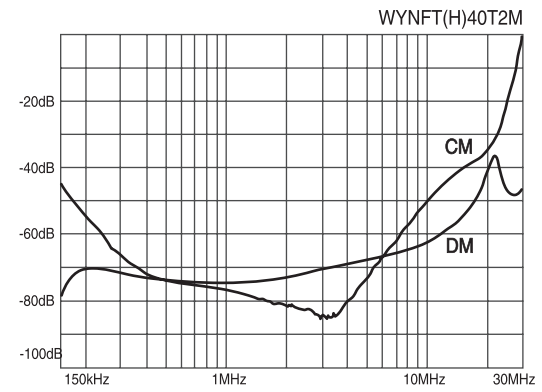
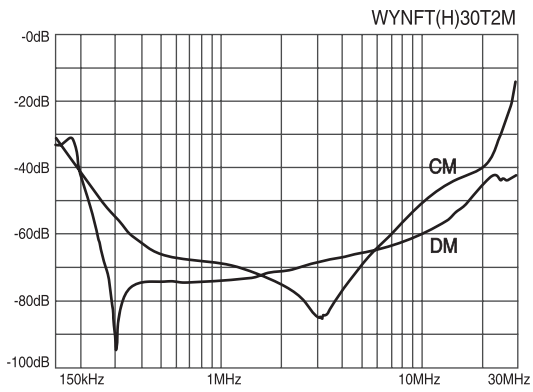
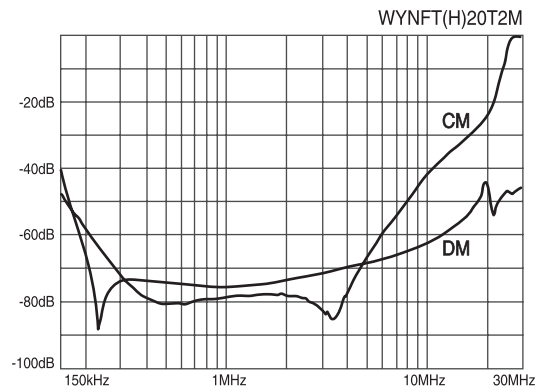
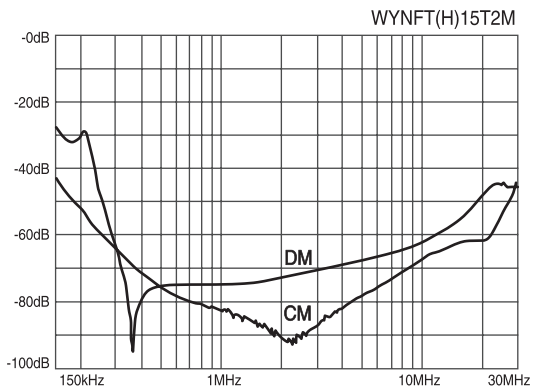
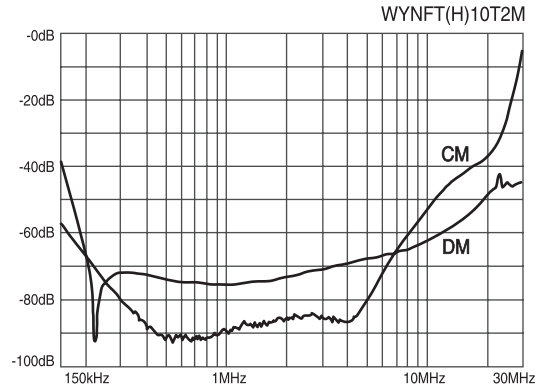
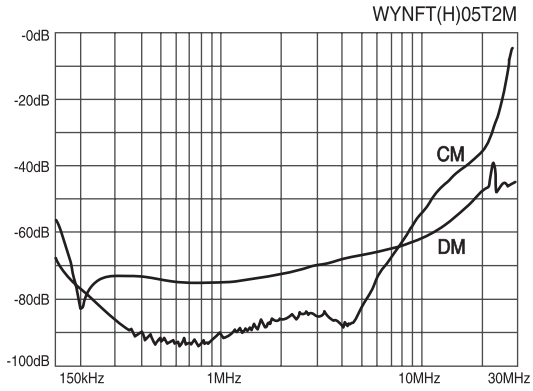


● Dimension



MODEL	W	H	D	a	b	c	d	M	Ø
WYNFTH40~50T2M	109	61.2	295	284.5	74	17	46	6	5
WYNFTH60~100T2M	137	76.9	380	368	96	24	59.7	8	5
WYNFTH120~250T2M	171.6	151.6	445.4	416	140	28.5	120.1	8	6.5

● Characteristics

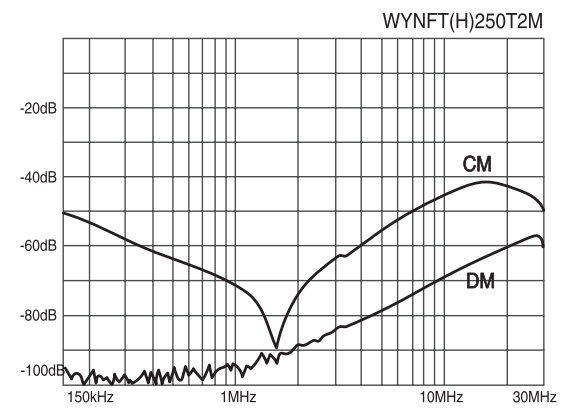
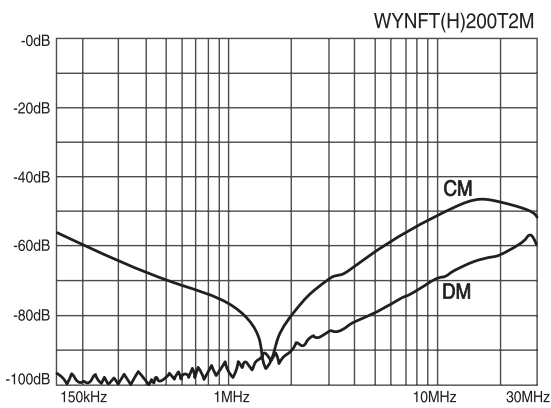
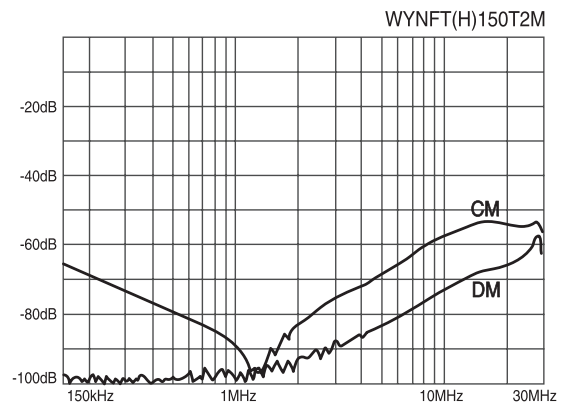
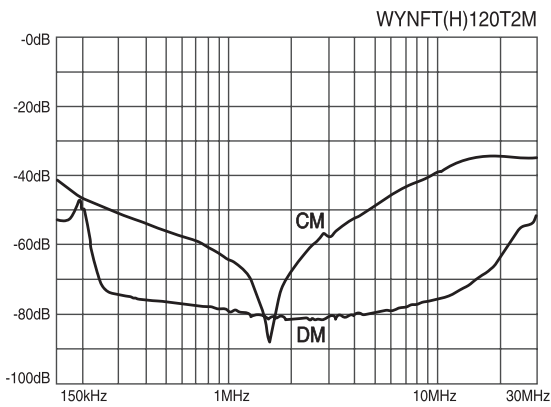
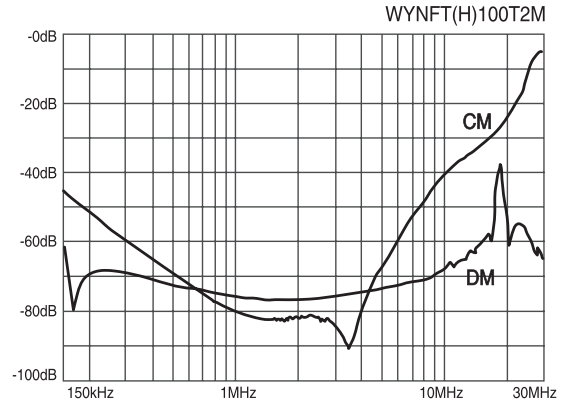
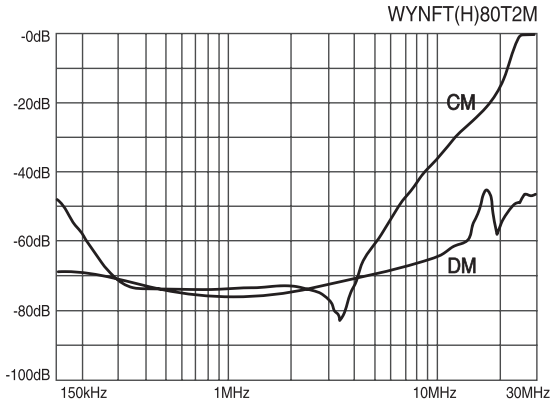


※ CM : Common mode, DM : Differential mode

NOISE FILTER

UL 3Ø 250~500V 고감쇄형 Characteristics

● Characteristics



※ CM : Common mode, DM : Differential mode

트랜스포머
REACTOR
리액터
무전선블레이
SSR
전력조정기
TPR
스위칭파워
SMP
노이즈 필터
H/F
하모닉 필터
SPD
서지보호기
RELAY
보통계전기
E/LD=GF
R
영상변류기
ZCT
METER
판넬메타
CT=VT
계기용변성기
SHUNT=FA
선트팬