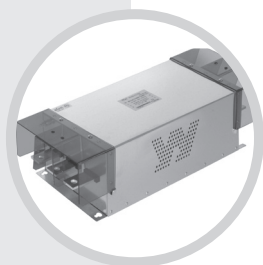
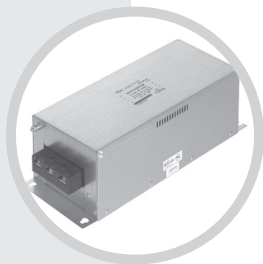


노이즈필터

Noise Filter

3Ø 고감쇄형(Multi-Stage Type)

- 3Ø 250V 5~1200A
- 3Ø 500V 5~1200A



NOISE FILTER

N Series 3Ø 250V 고감쇄형 Multi-Stage Type



● Features

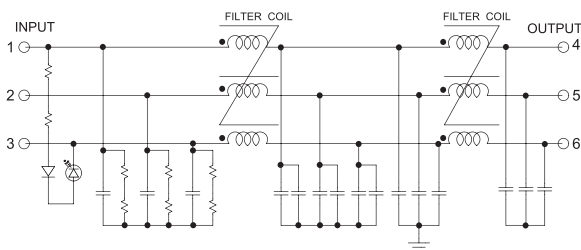
- Wide Band : High Attenuation
- Band Width : 150KHz~30MHz
- RoHS Compliant
- Inverter Output Type : Model Type"C"
(WYNFT05T2C)

● Specifications

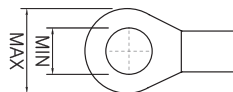
ITEM	MODEL	SYMBOL	WYNFT05T2M	WYNFT10T2M	WYNFT15T2M	WYNFT20T2M	WYNFT30T2M
Rated Voltage	V		250Vac				
Rated Current	A		5A	10A	15A	20A	30A
Frequency	Hz		50/60				
Dielectric Withstand	V		1500Vac for one 1minute				
Insulation Resistance	MΩ		DC 100MΩ at the 500Vdc				
Leakage Current	mA		≤4.5mA at the 250Vac				
Operating Temperature	℃		-25℃ ~ +100℃ [Refer to Derating Curve TYPE-2]				
Operating Humidity	RH		35~85%RH				
Weight	kg		1,2			2,2	

※ Derating Curve of page 103

● Circuit Diagram

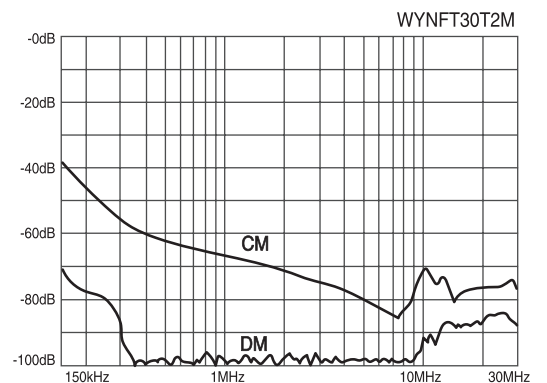
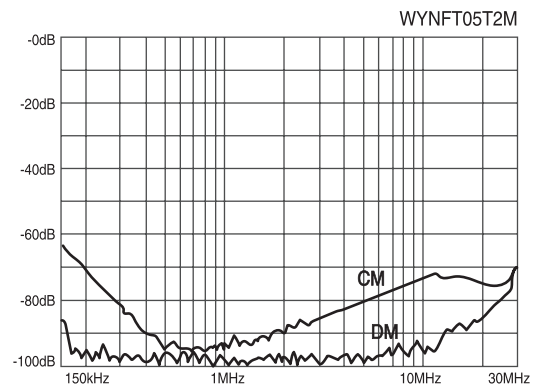


● Terminal

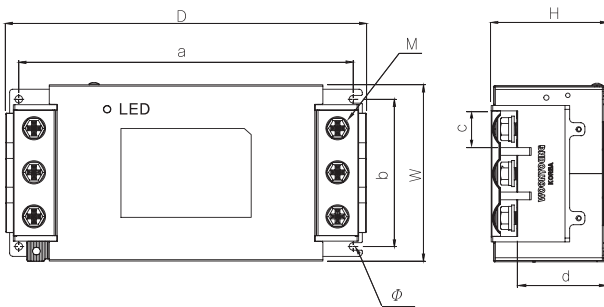


Max 10, Min 4 (5~15A)
Max 12, Min 5 (20~30A)

● Characteristics



● Dimension



MODEL	W	H	D	a	b	c	d	M	Ø
WYNFT5~15T2M	70.5	45	202	194	51.5	10.5	33	4	5
WYNFT20~30T2M	79.2	48.3	242	232	60	13	33.5	5	5

NOISE FILTER

N Series 3Ø 250V 고감쇄형 Multi-Stage Type



● Features

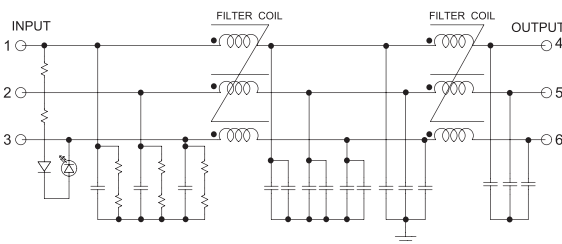
- Wide Band : High Attenuation
- Band Width : 150kHz~30MHz
- RoHS Compliant
- Inverter Output Type : Model Type"C"
(WYNFT40T2C)

● Specifications

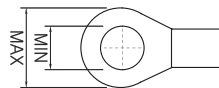
ITEM	MODEL	SYMBOL	WYNF T40T2M	WYNF T50T2M	WYNF T60T2M	WYNF T80T2M	WYNF T100T2M	WYNF T120T2M	WYNF T150T2M	WYNF T200T2M	WYNF T250T2M
Rated Voltage	V		250Vac								
Rated Current	A		40A	50A	60A	80A	100A	120A	150A	200A	250A
Frequency	Hz		50/60								
Dielectric Withstand	V		1500Vac for one 1minute								
Insulation Resistance	MΩ		DC 100MΩ at the 500Vdc								
Leakage Current	mA		≤16mA at the 250Vac								
Operating Temperature	℃		-25℃ ~ +100℃ [Refer to Derating Curve TYPE-2]								
Operating Humidity	RH		35~85%RH								
Weight	kg		2.2		3.5			4.5			

※ Derating Curve of page 103

● Circuit Diagram

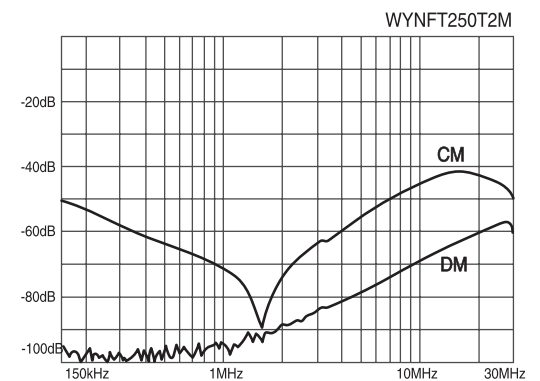
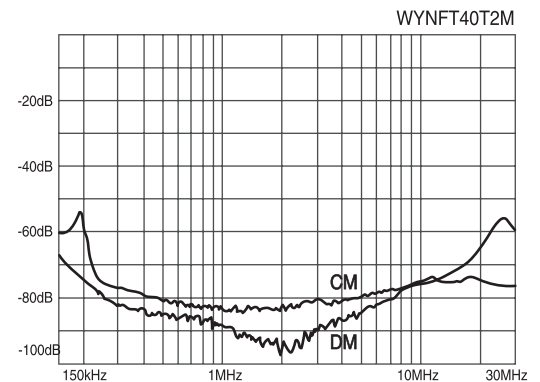


● Terminal

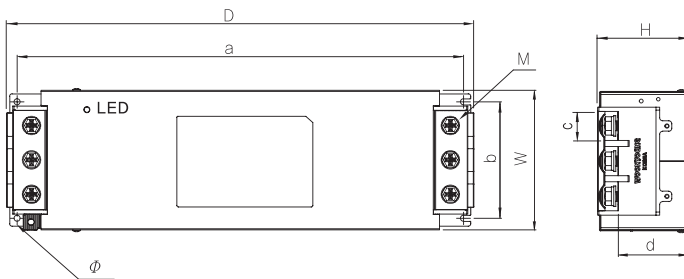


Max 16, Min 6 (40~50A)
Max 23, Min 8 (60~100A)
Max 28, Min 8 (120~250A)

● Characteristics



● Dimension



MODEL	W	H	D	a	b	c	d	M	Ø
WYNFT40~50T2M	91	57.2	295	284.5	74	17	42.3	6	5
WYNFT60~100T2M	115	75	385.2	368	96	24	58	8	5
WYNFT120~250T2M	170.8	151.6	446.5	416	140	28.5	120.1	8	6.5

TRANS=NCCT 트랜스포머
REACTOR 리액터
SSR 무정전블레이
TPR 전력조정기
SMPSS 스위칭공파워
NF/F 노이즈 필터
H/F 하모닉 필터
SPD 서지보호기
RELAY 보호계전기
ELD=GFRL 누전경보기
ZCT 영상변류기
METER 판넬메타
CT=VT 계기용변성기
SHUNT=FAAN 션트팬



● Features

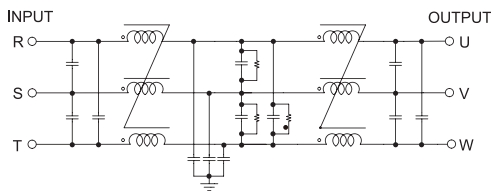
- High Attenuation
- High Voltage Pulse Noise
- 2 Stage Filter
- Band Width : 150KHz~30MHz
- RoHS Compliant
- Inverter Output Type : Model Type[®]C[®] (WYFT05T2C)

● Specifications

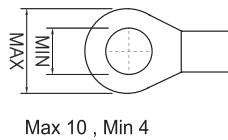
ITEM	MODEL	SYMBOL	WYFT05T2M	WYFT10T2M	WYFT15T2M	WYFT20T2M	WYFT30T2M
Rated Voltage	V		250				
Rated Current	A		5	10	15	20	30
Frequency	Hz		50/60				
Dielectric Withstand	V		1500				
Insulation Resistance	MΩ		500				
Leakage Current	mA		27				
Operating Temperature	°C		-25°C ~ +100°C [Refer to Derating Curve TYPE-2]				
Operating Humidity	RH		35~85%RH				
Weight	kg		1.2		1.7		

※ Derating Curve of page 103

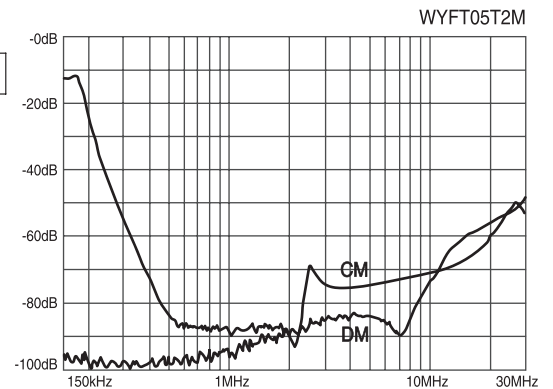
● Circuit Diagram



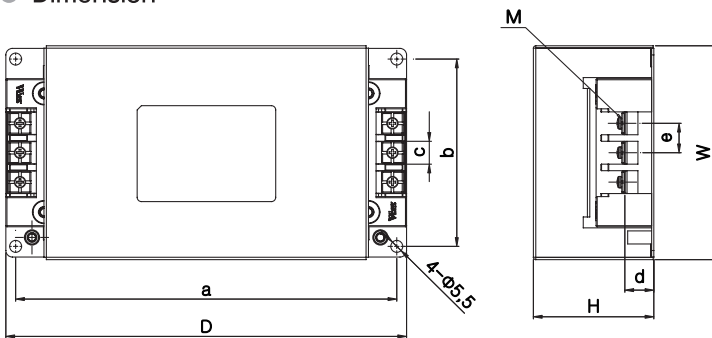
● Terminal



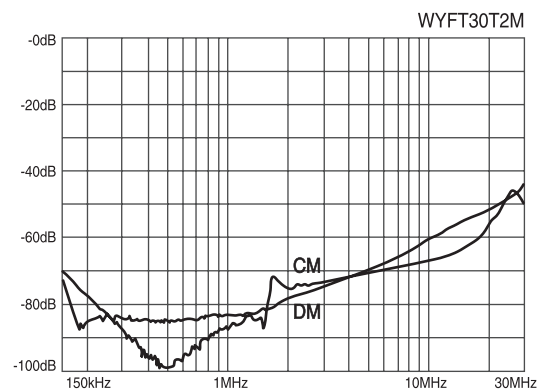
● Characteristics



● Dimension

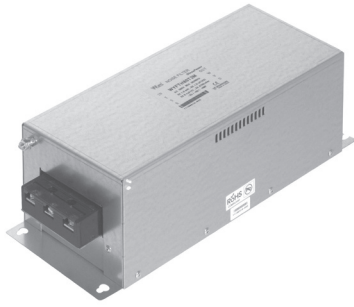


MODEL	W	H	D	a	b	c	d	e
WYFT05~15T2M	98	55	184	175	86	10.5	13	13.5
WYFT20~30T2M	116	75	234	219	98	10.5	14	13.5



NOISE FILTER

3Ø 250V 고감쇄형 Multi-Stage Type



● Features

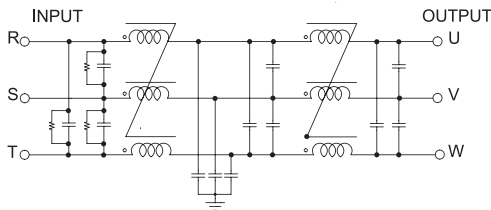
- High Attenuation
- High Voltage Pulse Noise
- 2 Stage Filter
- Band Width : 150KHz~30MHz
- RoHS Compliant
- Inverter Output Type : Model Type"C"
(WYFT40T2C)

● Specifications

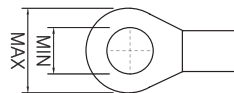
ITEM	MODEL	SYMBOL	WYF T40T2M	WYF T50T2M	WYF T60T2M	WYF T80T2M	WYF T100T2M	WYF T120T2M	WYF T150T2M	WYF T200T2M	WYF T250T2M	
Rated Voltage	V		250									
Rated Current	A		40	50	60	80	100	120	150	200	250	
Frequency	Hz		50/60									
Dielectric Withstand	V		1500									
Insulation Resistance	MΩ		500									
Leakage Current	mA		27									
Operating Temperature	°C		-25°C ~ +100°C [Refer to Derating Curve TYPE-2]									
Operating Humidity	RH		35~85%RH									
Weight	kg		3,5			7,0			10,5		12,0	

※ Derating Curve of page 103

● Circuit Diagram

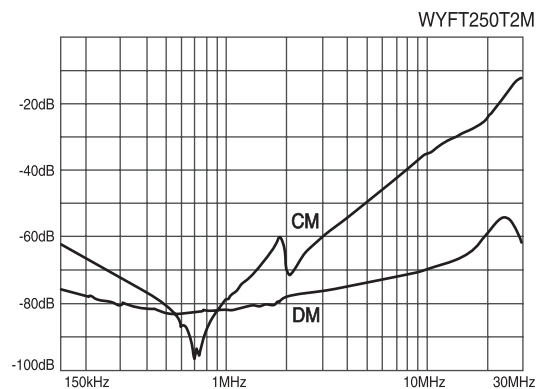
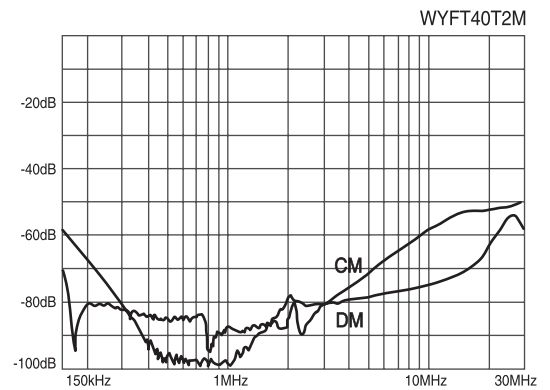


● Terminal

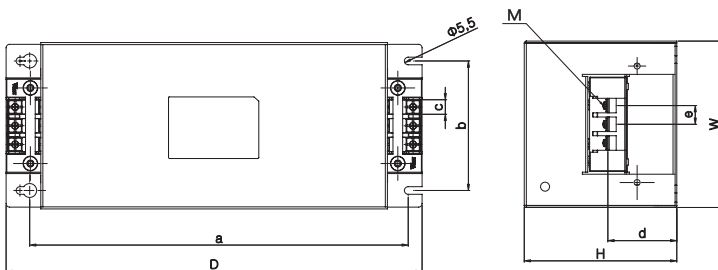


Max 10, Min 4(40~50A)
Max 14, Min 6(60~100A)
Max 22, Min 8(120~150A)
Max 24, Min 8(200~250A)

● Characteristics

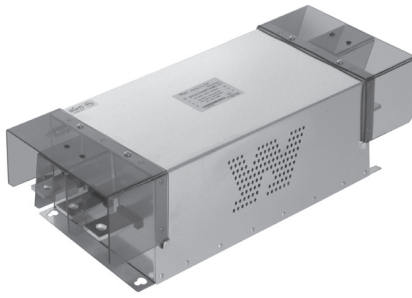


● Dimension



MODEL	W	H	D	a	b	c	d	e	M
WYFT40~50T2M	124	110	306	273	93	10,5	50	13,5	M4
WYFT60~100T2M	140	130	410	373	113	15	60	27,5	M6
WYFT120~150T2M	170	163	458	417	143	23	71	35	M8
WYFT200~250T2M	170	163	467	417	143	25	76	38,5	M8

TRANS= NCT 트랜스포머
 REACTOR 리액터
 SSR 무정전압블레이
 TPR 전력조정기
 SMPSS 스위칭파워
 NF/F 노이즈 필터
 H/F 하모닉 필터
 SPD 서지보호기
 RELAY 보호계전기
 ELD= GFR 누전경보기
 ZCCT 영상변류기
 METER 판넬메타
 CT= VVT 계기용 변성기
 SHUNT= FAN 선편트 팬



● Features

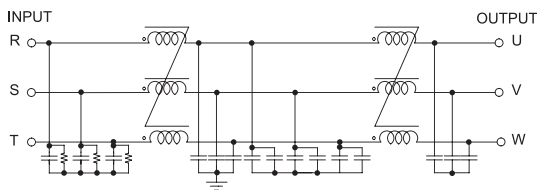
- High Attenuation
- High Voltage Pulse Noise
- 2 Stage Filter
- Band Width : 150KHz~30MHz
- RoHS Compliant
- Inverter Output Type : Model Type"C"
(WYFT300T2C)

● Specifications

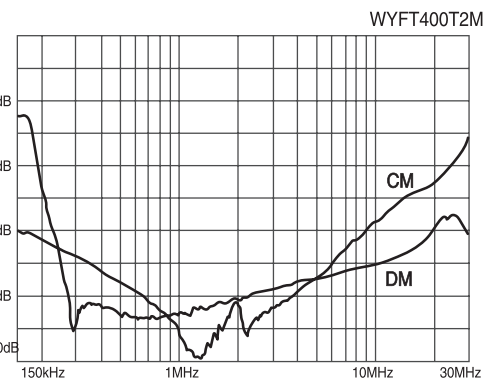
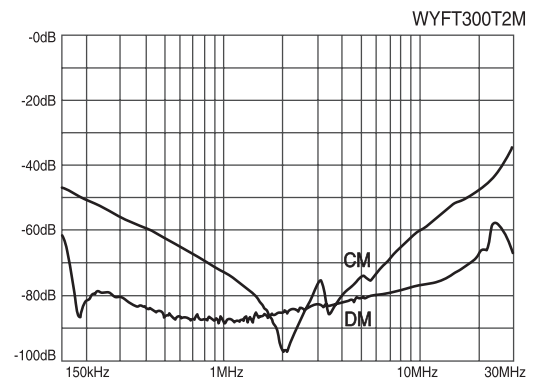
ITEM	MODEL	SYMBOL	WYFT300T2M	WYFT400T2M
Rated Voltage	V		250	
Rated Current	A		300	400
Frequency	Hz		50/60	
Dielectric Withstand	V		1500	
Insulation Resistance	MΩ		500	
Leakage Current	mA		27	
Operating Temperature	°C		-25°C ~ +100°C [Refer to Derating Curve TYPE-2]	
Operating Humidity	RH		35~85%RH	
Weight	kg		12,5	15,5

※ Derating Curve of page 103

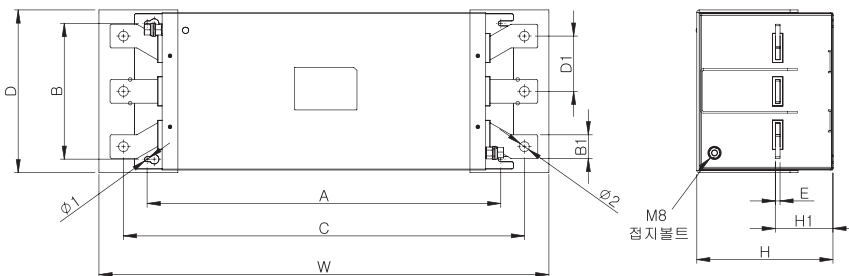
● Circuit Diagram



● Characteristics



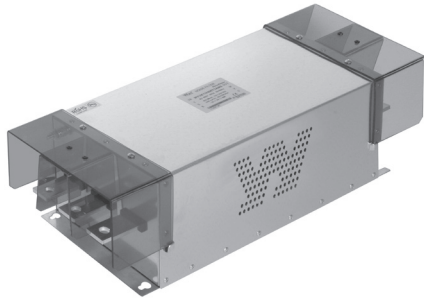
● Dimension



MODEL	W	H	D	A	B	C	B1	D1	H1	E	Ø1	Ø2
300A	528	173	206	448	172	466	30	55	67	6	6.4	12.5
400A	570	173	206	448	172	508	30	55	67	6	6.4	12.5

NOISE FILTER

3Ø 250V 고감쇄형 Multi-Stage Type



● Features

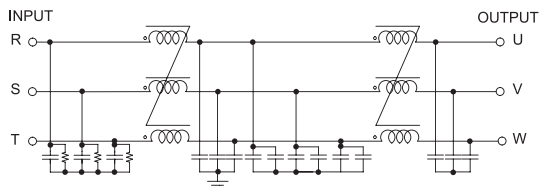
- High Attenuation
- High Voltage Pulse Noise
- 2 Stage Filter
- Band Width : 150KHz~30MHz
- RoHS Compliant
- Inverter Output Type : Model Type"C"
(WYFT500T2C)

● Specifications

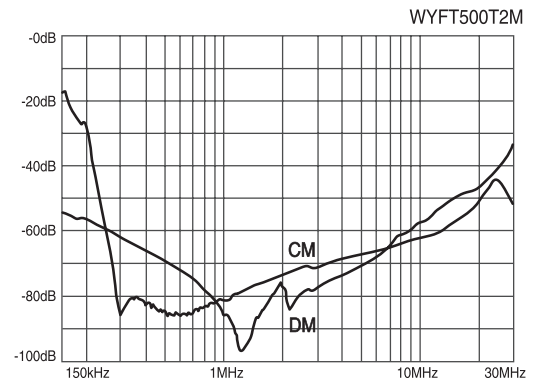
ITEM	MODEL	SYMBOL	WYFT500T2M
Rated Voltage	V		250
Rated Current	A		500
Frequency	Hz		50/60
Dielectric Withstand	V		1500
Insulation Resistance	MΩ		300
Leakage Current	mA		27
Operating Temperature	°C		-25°C ~ +100°C [Refer to Derating Curve TYPE-2]
Operating Humidity	RH		35~85%RH
Weight	kg		16

※ Derating Curve of page 103

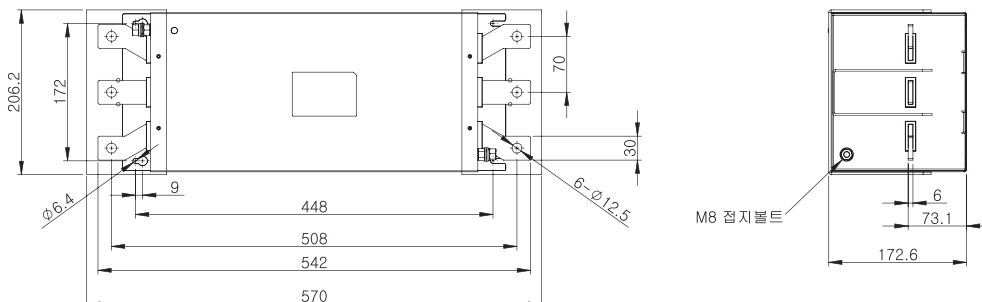
● Circuit Diagram



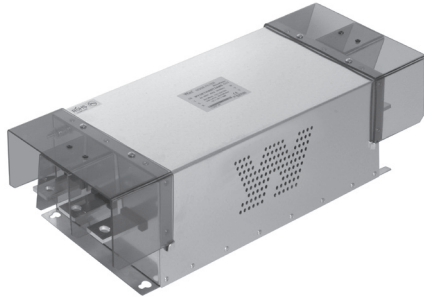
● Characteristics



● Dimension



TRANS=NOCT
트랜스포머
리액터
REACTOR
무정전압블레이
SSR
전력조정기
TPR
스위칭공파워
SMPs
노이즈필터
N/F
하모닉필터
H/F
서지보호기
SPD
보호계전기
RELAY
누전경보기
ELD=GFRR
영상변류기
ZCT
판넬메타
METER
계기용변성기
CT=VT
선편
SHUNT=FAAN



● Features

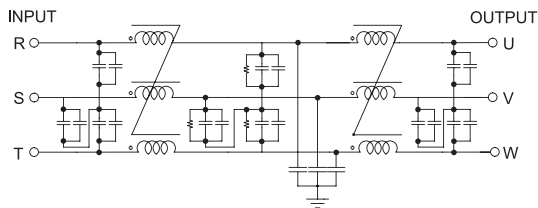
- High Attenuation
- High Voltage Pulse Noise
- 2 Stage Filter
- Band Width : 150KHz~30MHz
- RoHS Compliant
- Inverter Output Type : Model Type"C"
(WYFT600T2C)

● Specifications

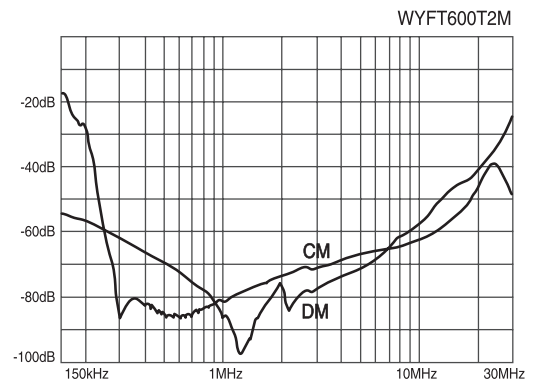
ITEM	MODEL	SYMBOL	WYFT600T2M	WYFT800T2M	WYFT1000T2M	WYFT1200T2M
Rated Voltage	V		250			
Rated Current	A		600	800	1000	1200
Frequency	Hz		50/60			
Dielectric Withstand	V		1500			
Insulation Resistance	MΩ		500			
Leakage Current	mA		27			
Operating Temperature	°C		-25°C ~ +100°C [Refer to Derating Curve TYPE-2]			
Operating Humidity	RH		35~85%RH			
Weight	kg		23			

※ Derating Curve of page 103

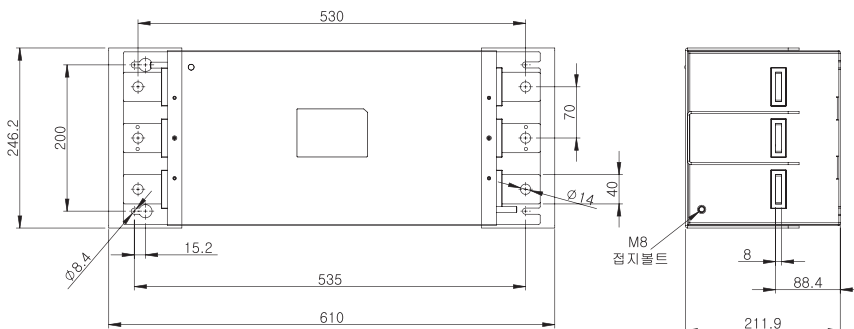
● Circuit Diagram



● Characteristics



● Dimension



NOISE FILTER

N Series 3Ø 500V 고감쇄형 Multi-Stage Type



● Features

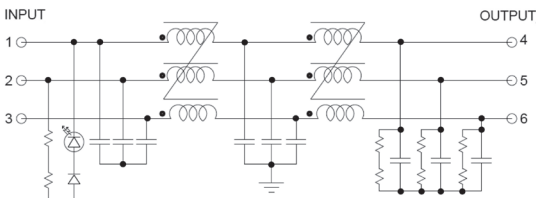
- Wide Band : High Attenuation
- Band Width : 150KHz~30MHz
- RoHS Compliant
- Inverter Output Type : Model Type"C"
(WYNFTH05T2C)

● Specifications

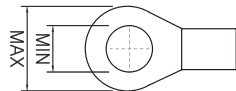
ITEM	MODEL	SYMBOL	WYNFTH05T2M	WYNFTH10T2M	WYNFTH15T2M	WYNFTH20T2M	WYNFTH30T2M
Rated Voltage	V		500Vac				
Rated Current	A		5A	10A	15A	20A	30A
Frequency	Hz		50/60				
Dielectric Withstand	V		1500Vac for one 1minute				
Insulation Resistance	MΩ		DC 100MΩ at the 500Vdc				
Leakage Current	mA		≤4.5mA at the 250Vac				
Operating Temperature	°C		-25°C ~ +100°C [Refer to Derating Curve TYPE-2]				
Operating Humidity	RH		35~85%RH				
Weight	kg		1.2		2.2		

※ Derating Curve of page 103

● Circuit Diagram

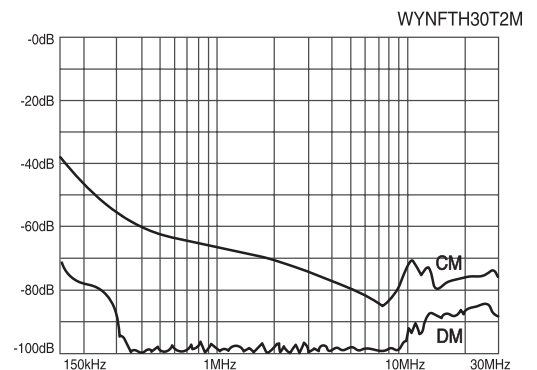
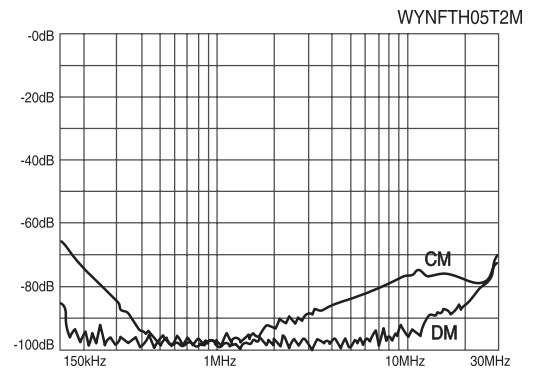


● Terminal

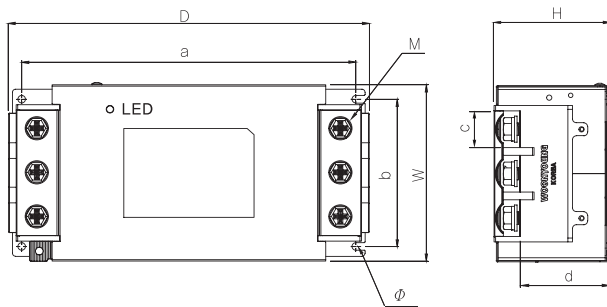


Max 10, Min 4 (40~60A)
Max 12, Min 5 (80~120A)

● Characteristics



● Dimension



MODEL	W	H	D	a	b	c	d	M	φ
WYNFTH5~15T2M	70.5	45	202	194	51.5	10.5	33	4	5
WYNFTH20~30T2M	79.2	48.3	242	232	60	13	33.5	5	5

트랜스포머
REACTOR
리액터
무정전압블레이
SSR
전력조정기
TPR
스위칭파워
SMP
노이즈 필터
H/F
하모닉 필터
서지보호기
SPD
보호계전기
RELAY
누전경보기
ELD=GF
영상변류기
ZCT
판넬메타
METER
계기용변류기
CT=VT
SHUNT=FA
선트팬

NOISE FILTER

N Series 3Ø 500V 고감쇄형 Multi-Stage Type



● Features

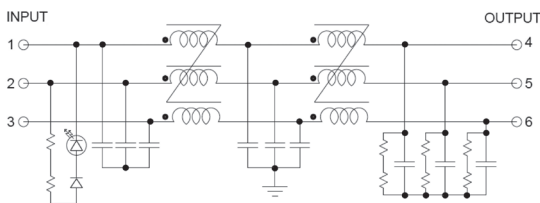
- Wide Band : High Attenuation
- Band Width : 150kHz~30MHz
- RoHS Compliant
- Inverter Output Type : Model Type"C"
(WYNFTH40T2C)

● Specifications

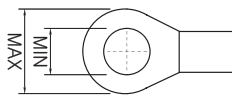
ITEM	MODEL	SYMBOL	WYNF	WYNF	WYNF	WYNF	WYNF	WYNF	WYNF	WYNF	WYNF
			TH40T2M	TH50T2M	TH60T2M	TH80T2M	TH100T2M	TH120T2M	TH150T2M	TH200T2M	TH250T2M
Rated Voltage		V	500Vac								
Rated Current		A	40A	50A	60A	80A	100A	120A	150A	200A	250A
Frequency		Hz	50/60								
Dielectric Withstand		V	1500Vac for one 1minute								
Insulation Resistance		MΩ	DC 100MΩ at the 500Vdc								
Leakage Current		mA	≤26mA at the 250Vac								
Operating Temperature		°C	-25°C ~ +100°C [Refer to Derating Curve TYPE-2]								
Operating Humidity		RH	35~85%RH								
Weight		kg	2,2			3,5			4,5		

※ Derating Curve of page 103

● Circuit Diagram

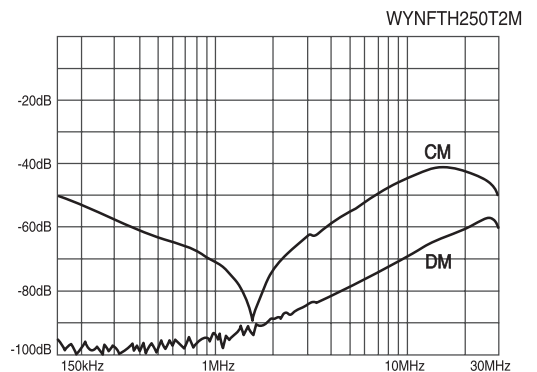
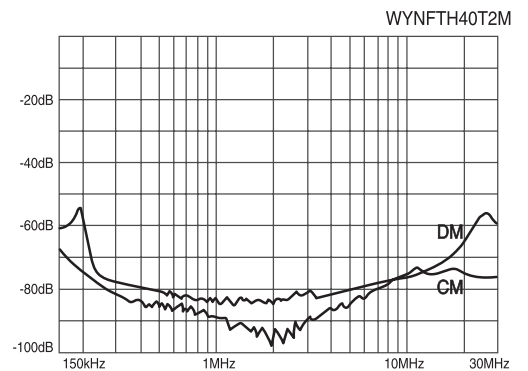


● Terminal

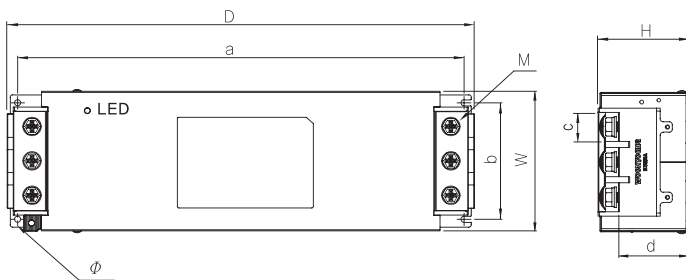


Max 16, Min 6 (40~50A)
Max 23, Min 8 (60~100A)
Max 28, Min 8 (120~250A)

● Characteristics



● Dimension



MODEL	W	H	D	a	b	c	d	M	∅
WYNFTH40~50T2M	91	57.2	295	284.5	74	17	42.3	6	5
WYNFTH60~100T2M	115	75	385.2	368	96	24	58	8	5
WYNFTH120~250T2M	170.8	151.6	446.5	416	140	28.5	120.1	8	6.5

NOISE FILTER

3Ø 500V 고감쇄형 Multi-Stage Type



● Features

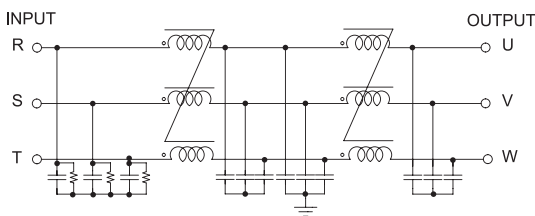
- High Attenuation
- High Voltage Pulse Noise
- 2 Stage Filter
- Band Width : 150KHz~30MHz
- RoHS Compliant
- Inverter Output Type : Model Type"C"
(WYFTH05T2C)

● Specifications

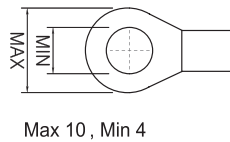
ITEM	MODEL	SYMBOL	WYFTH05T2M	WYFTH10T2M	WYFTH15T2M	WYFTH20T2M	WYFTH30T2M
Rated Voltage		V					500
Rated Current		A	5	10	15	20	30
Frequency		Hz					50/60
Dielectric Withstand		V					1500
Insulation Resistance		MΩ					500
Leakage Current		mA					54
Operating Temperature		℃					-25℃ ~ +100℃ [Refer to Derating Curve TYPE-2]
Operating Humidity		RH					35~85%RH
Weight		kg	0.8			1.7	

※ Derating Curve of page 103

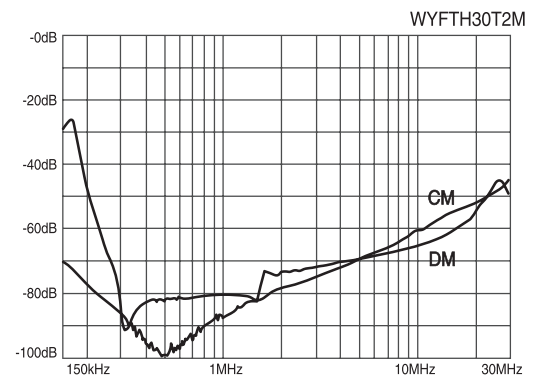
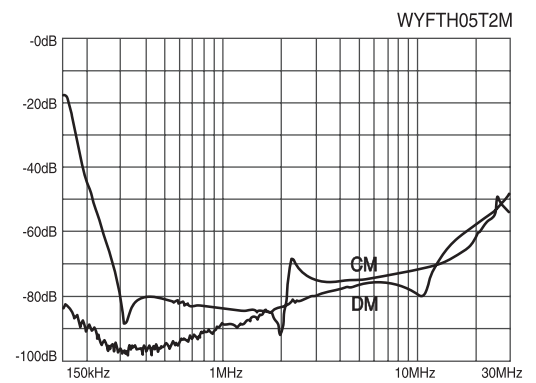
● Circuit Diagram



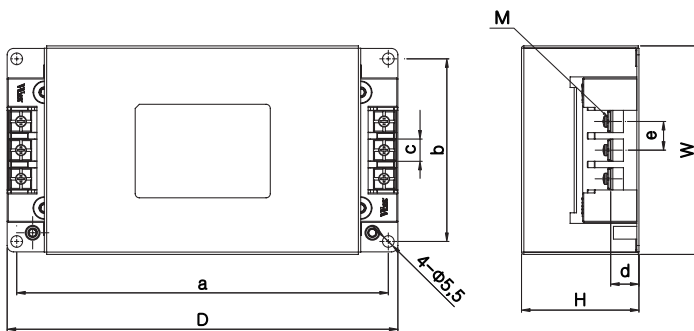
● Terminal



● Characteristics



● Dimension

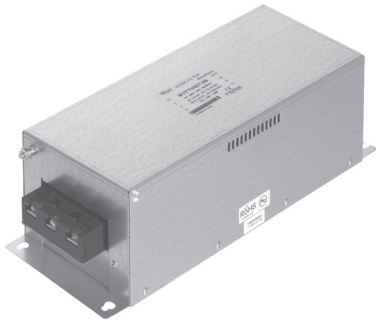


MODEL	W	H	D	a	b	c	d	e
WYFT05~15T2M	98	55	184	175	86	10.5	13	13.5
WYFT20~30T2M	116	75	234	219	98	10.5	14	13.5

트랜스포머
REACTOR
리액터
무정전압블레이
SSR
전력조정기
TPR
스위칭파워
SMP
노이즈 필터
H/F
하모닉 필터
SPD
서지보호기
RELAY
보통계전기
E/LD=GF
R
영상변류기
ZCT
METER
판넬메타
CT=VT
계기용변성기
SHUNT=FA
선트팬

NOISE FILTER

3Ø 500V 고감쇄형 Multi-Stage Type



● Features

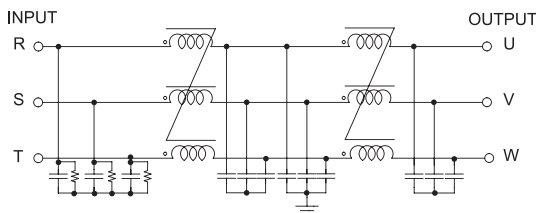
- High Attenuation
- High Voltage Pulse Noise
- 2 Stage Filter
- Band Width : 150KHz~30MH
- RoHS Compliantz
- Inverter Output Type : Model Type"C"
(WYFTH40T2C)

● Specifications

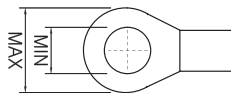
ITEM	MODEL	SYMBOL	WYF TH40T2M	WYF TH50T2M	WYF TH60T2M	WYF TH80T2M	WYF TH100T2M	WYF TH120T2M	WYF TH150T2M	WYF TH200T2M	WYF TH250T2M	
Rated Voltage	V		500									
Rated Current	A		40	50	60	80	100	120	150	200	250	
Frequency	Hz		50/60									
Dielectric Withstand	V		1500									
Insulation Resistance	MΩ		500									
Leakage Current	mA		54									
Operating Temperature	°C		-25°C ~ +100°C [Refer to Derating Curve TYPE-2]									
Operating Humidity	RH		35~85%RH									
Weight	kg		3.5			7.0			10.5			12.0

※ Derating Curve of page 103

● Circuit Diagram

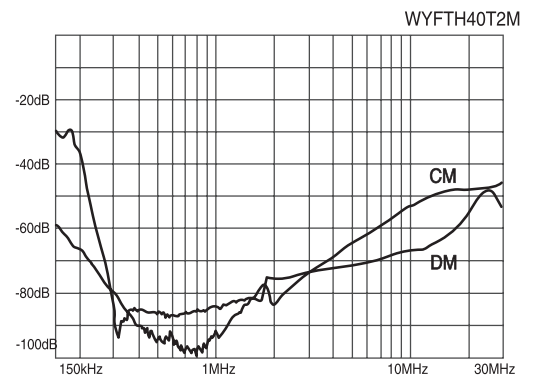


● Terminal

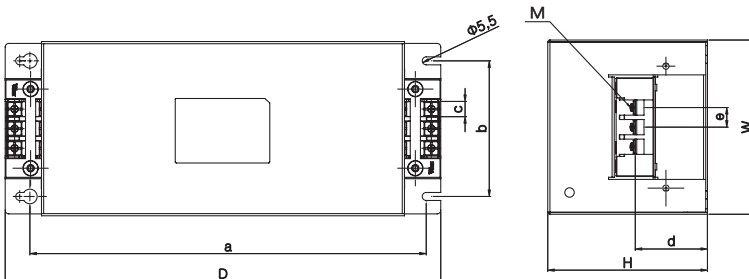


Max 10, Min 4(40~50A)
Max 14, Min 6(60~100A)
Max 22, Min 8(120~150A)
Max 24, Min 8(200~250A)

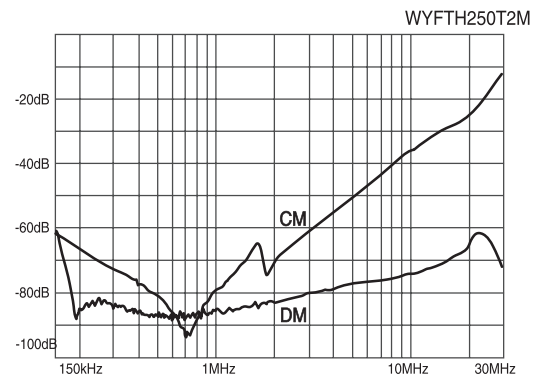
● Characteristics



● Dimension

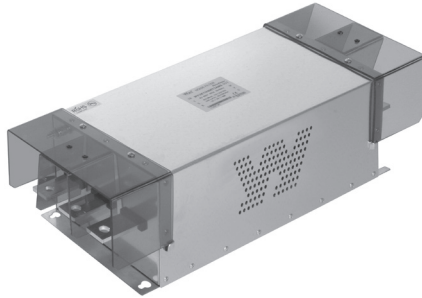


MODEL	W	H	D	a	b	c	d	e	M
WYFT40~50T2M	124	110	300	273	93	10.5	50	13.5	M4
WYFT60~100T2M	140	130	400	373	113	15	60	27.5	M6
WYFT120~150T2M	170	163	444	417	143	23	71	35	M8
WYFT200~250T2M	170	163	444	417	143	25	76	38.5	M8



NOISE FILTER

3Ø 500V 고감쇄형 Multi-Stage Type



● Features

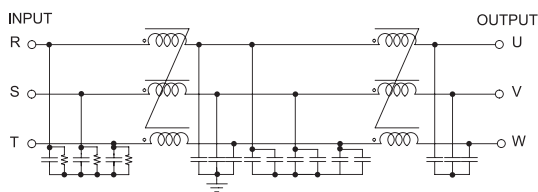
- High Attenuation
- High Voltage Pulse Noise
- 2 Stage Filter
- Band Width : 150KHz~30MHz
- RoHS Compliant
- Inverter Output Type : Model Type"C" (WYFTH300T2C)

● Specifications

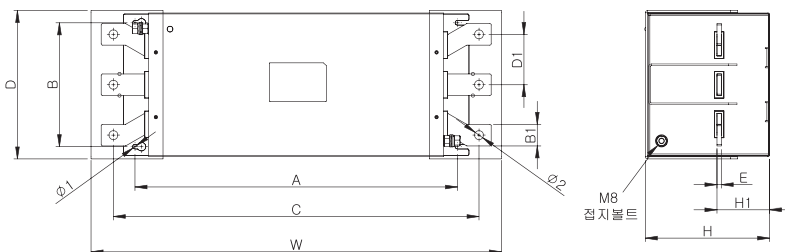
ITEM	MODEL	SYMBOL	WYFTH300T2M	WYFTH400T2M
Rated Voltage	V		500	
Rated Current	A		300	400
Frequency	Hz		50/60	
Dielectric Withstand	V		1500	
Insulation Resistance	MΩ		500	
Leakage Current	mA		54	
Operating Temperature	°C		-25°C ~ +100°C [Refer to Derating Curve TYPE-2]	
Operating Humidity	RH		35~85%RH	
Weight	kg		12,5	15,5

※ Derating Curve of page 103

● Circuit Diagram

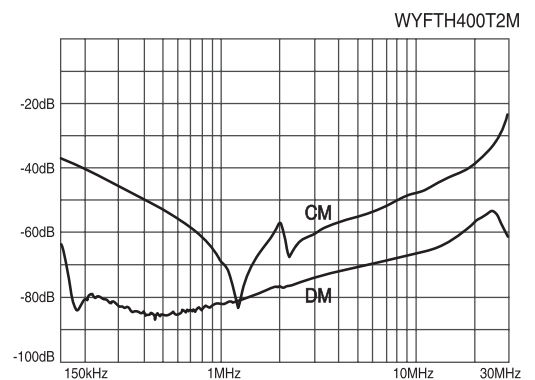
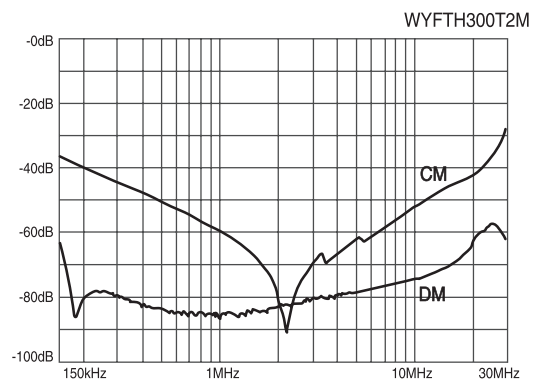


● Dimension



MODEL	W	H	D	A	B	C	B1	D1	H1	E	Ø1	Ø2
300A	528	173	206	448	172	466	30	55	67	6	6.4	12.5
400A	570	173	206	448	172	508	30	55	67	6	6.4	12.5

● Characteristics



T
R
A
N
S
=
N
C
T
트랜스포머

R
E
A
C
T
O
R
리액터

S
S
R
무정전압블레이

T
P
R
전력조정기

S
M
P
S
스위칭파워

N
/
F
노이즈필터

H
/
F
하모닉필터

S
P
D
서지보호기

R
E
L
A
Y
보통계전기

E
L
D
=
G
F
R
누전경보기

Z
C
T
영상변류기

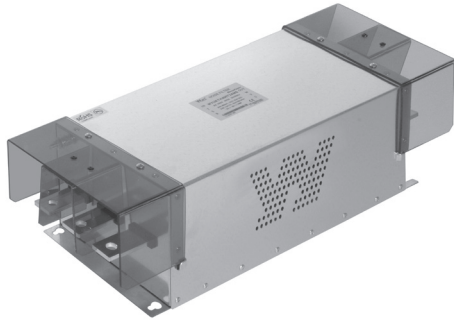
M
E
T
E
R
판넬메타

C
T
=
V
T
계기용변성기

S
H
U
N
T
=
F
A
N
선풍기팬

NOISE FILTER

3Ø 500V 고감쇄형 Multi-Stage Type



● Features

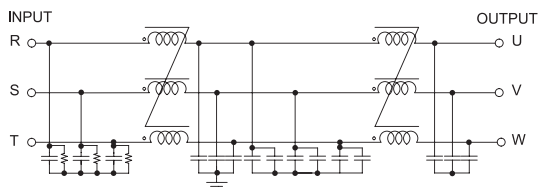
- High Attenuation
- High Voltage Pulse Noise
- 2 Stage Filter
- Band Width : 150KHz~30MHz
- RoHS Compliant
- Inverter Output Type : Model Type"C"
(WYFTH500T2C)

● Specifications

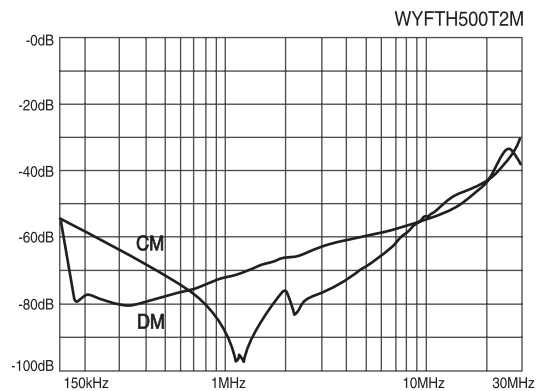
ITEM	MODEL	SYMBOL	WYFTH500T2M
Rated Voltage		V	500
Rated Current		A	500
Frequency		Hz	50/60
Dielectric Withstand		V	1500
Insulation Resistance		MΩ	500
Leakage Current		mA	54
Operating Temperature		°C	-25°C ~ +100°C [Refer to Derating Curve TYPE-2]
Operating Humidity		RH	35~85%RH
Weight		kg	16

※ Derating Curve of page 103

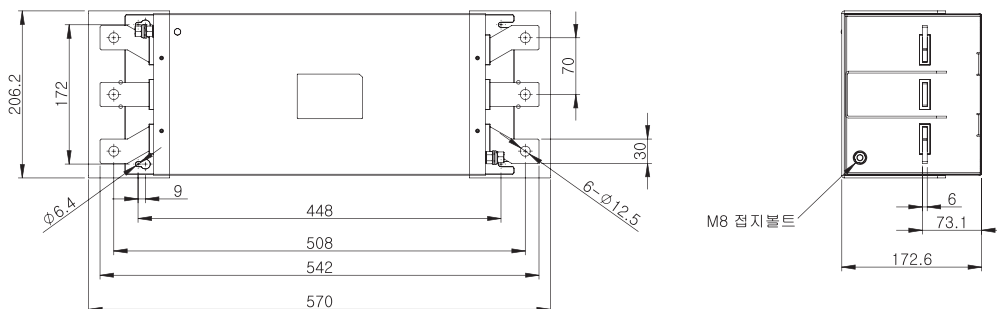
● Circuit Diagram



● Characteristics

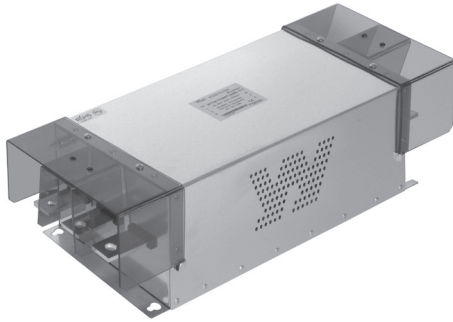


● Dimension



NOISE FILTER

3Ø 500V 고감쇄형 Multi-Stage Type



● Features

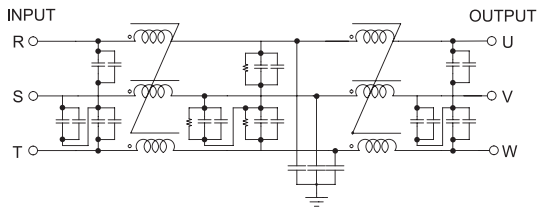
- High Attenuation
- High Voltage Pulse Noise
- 2 Stage Filter
- Band Width : 150KHz~30MHz
- RoHS Compliant
- Inverter Output Type : Model Type"C"
(WYFTH600T2C)

● Specifications

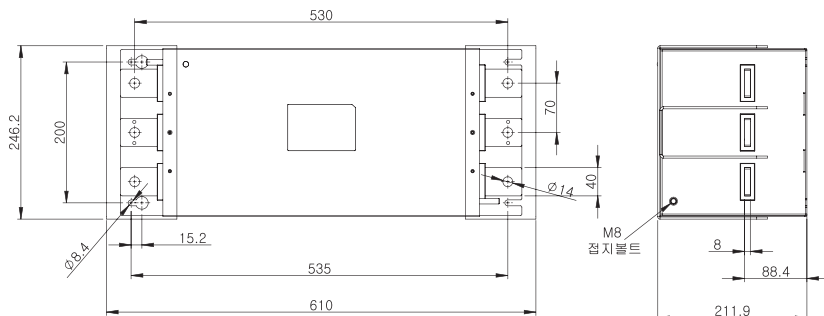
ITEM	MODEL	SYMBOL	WYFTH600T2M	WYFTH800T2M	WYFTH1000T2M	WYFTH1200T2M
Rated Voltage		V	500			
Rated Current		A	600	800	1000	1200
Frequency		Hz	50/60			
Dielectric Withstand		V	1500			
Insulation Resistance		MΩ	500			
Leakage Current		mA	54			
Operating Temperature		°C	-25°C ~ +100°C [Refer to Derating Curve TYPE-2]			
Operating Humidity		RH	35~85%RH			
Weight		kg	23			

※ Derating Curve of page 103

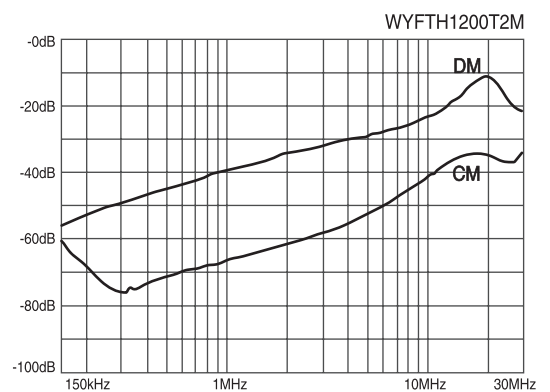
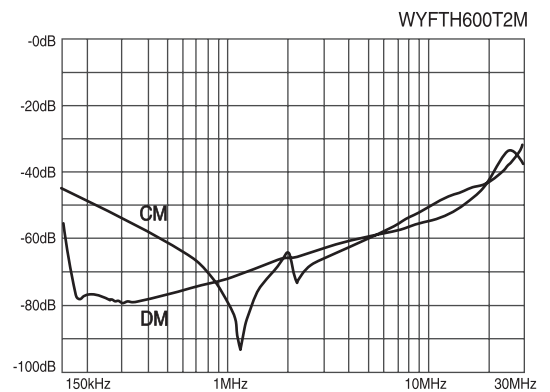
● Circuit Diagram



● Dimension

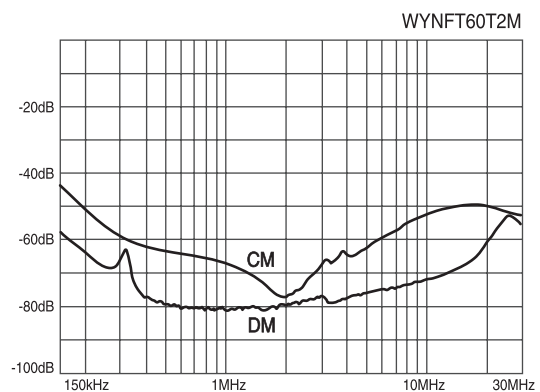
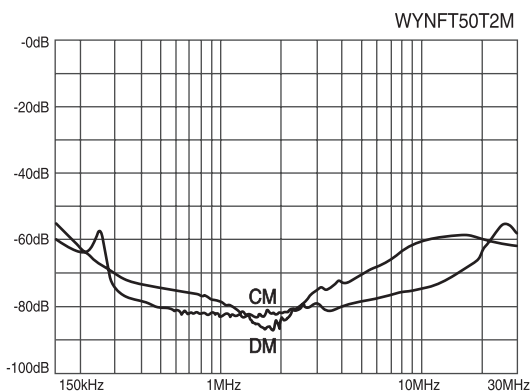
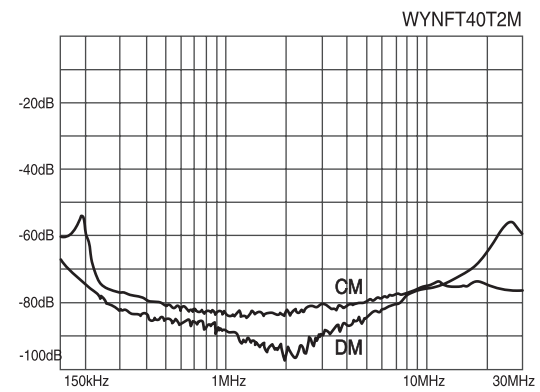
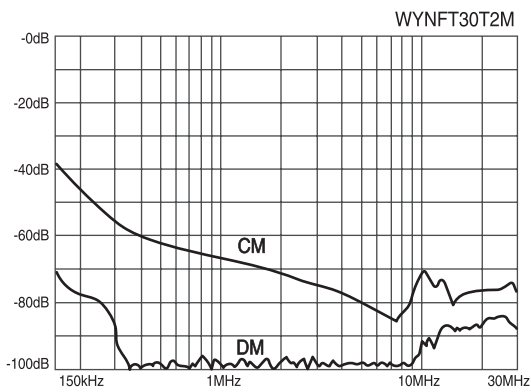
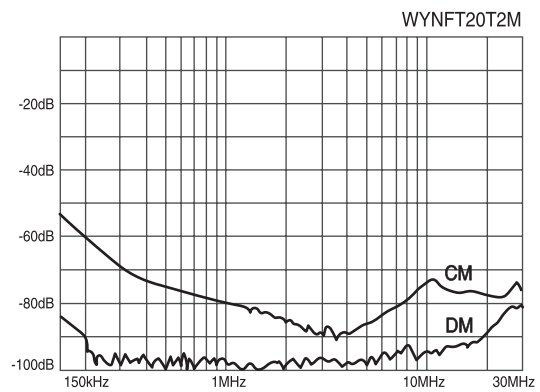
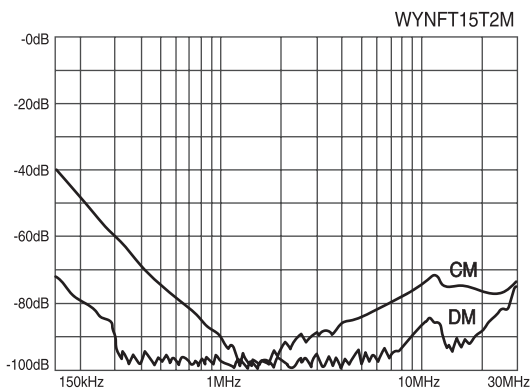
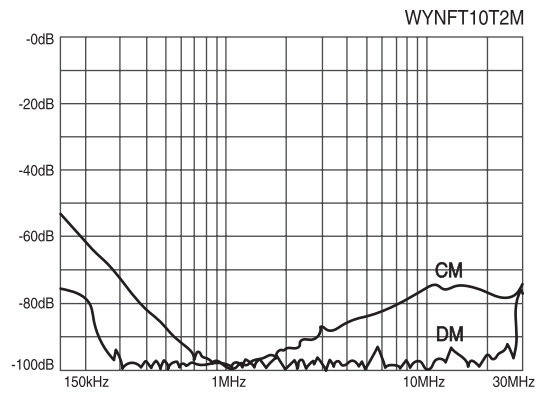
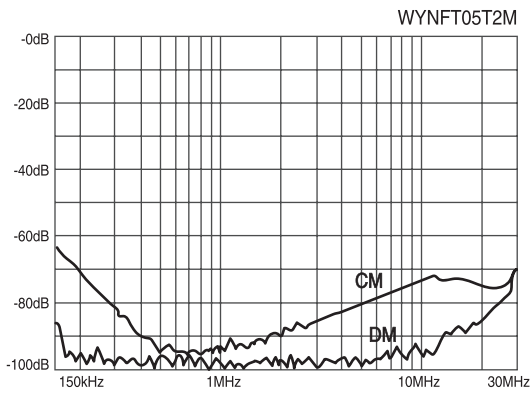


● Characteristics



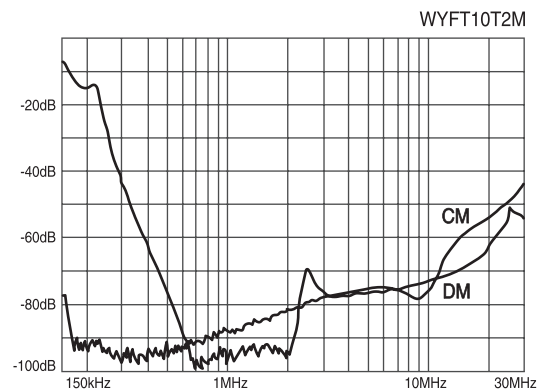
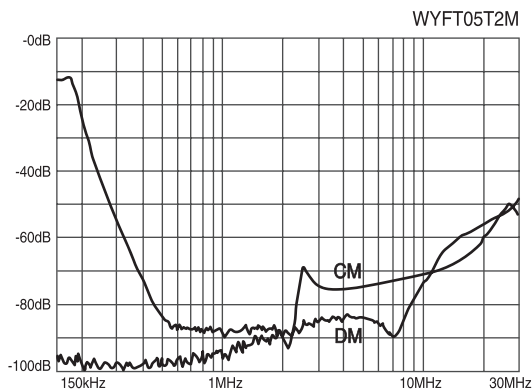
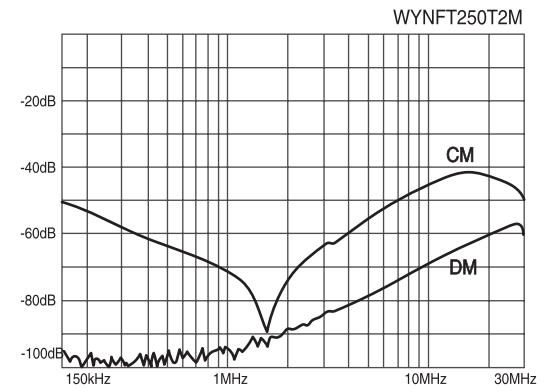
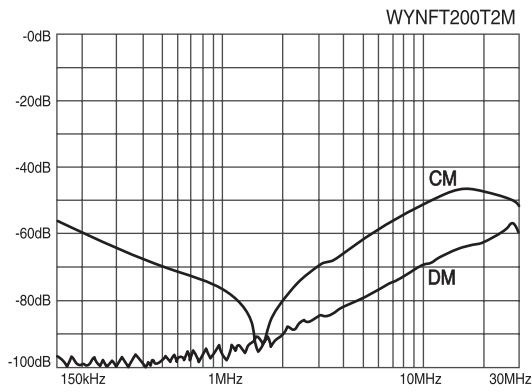
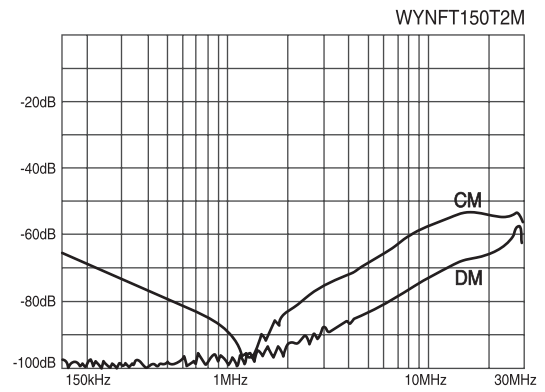
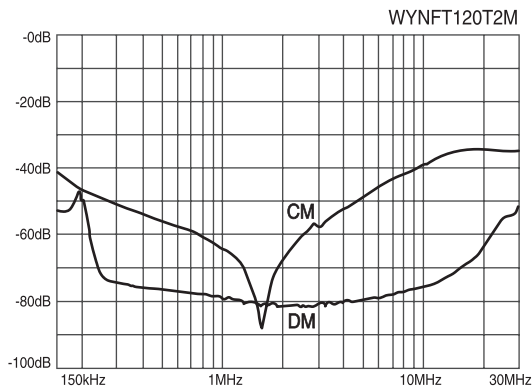
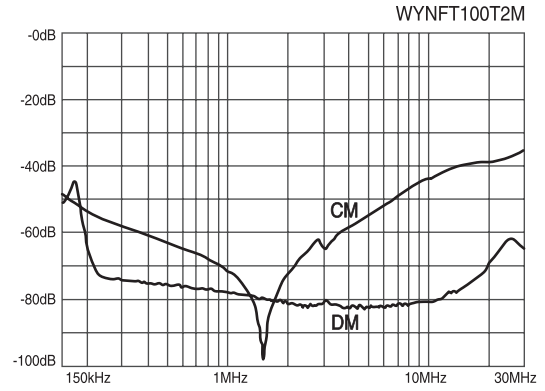
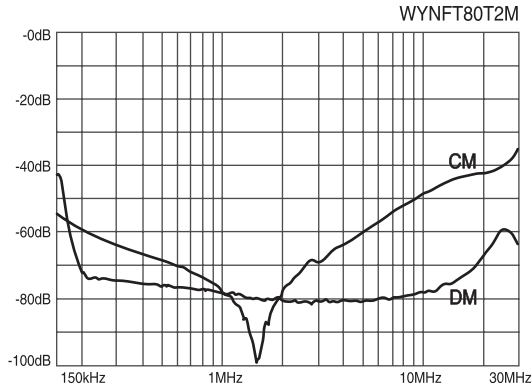
TRANS= NCT 트랜스포머
REACTOR 리액터
SSR 무접점릴레이
TPR 전력조정기
SMPs 스위칭파워
NF/F 노이즈필터
HF/F 하모닉필터
SPD 서지보호기
RELAY 보호계전기
ELD= GFR 누전경보기
ZCT 영상변류기
METER 판넬메타
CT= VT 계기용변성기
SHUNT= FAN 션트팬

● Characteristics



※ CM : Common mode, DM : Differential mode

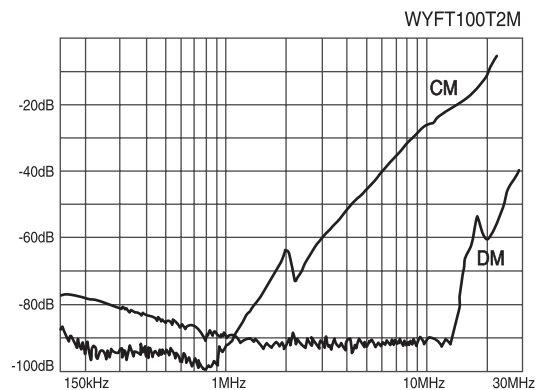
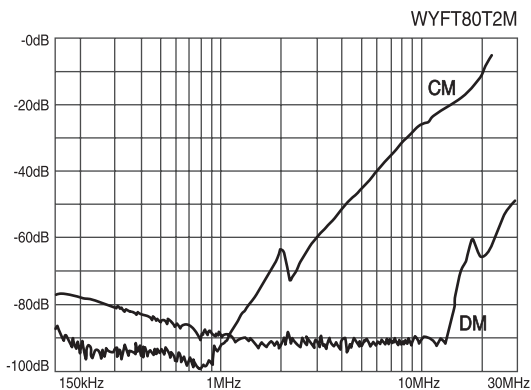
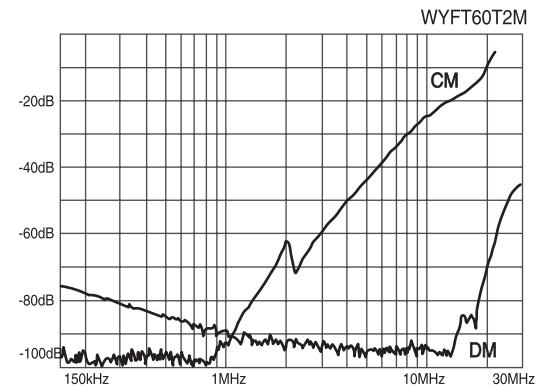
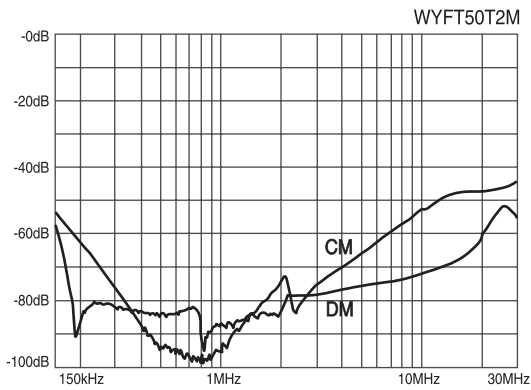
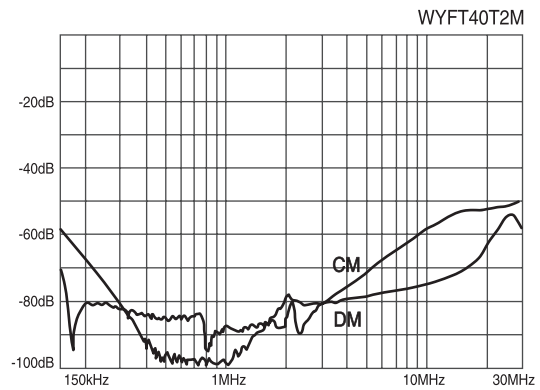
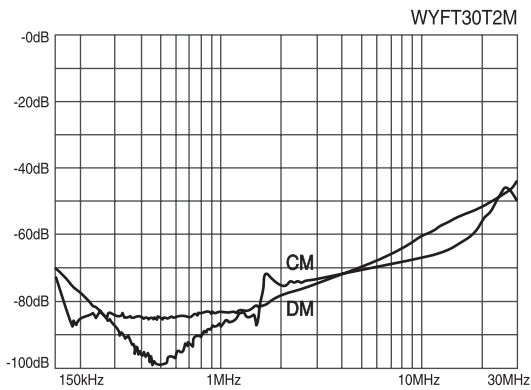
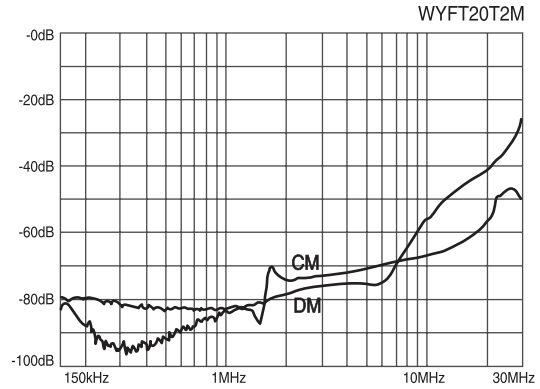
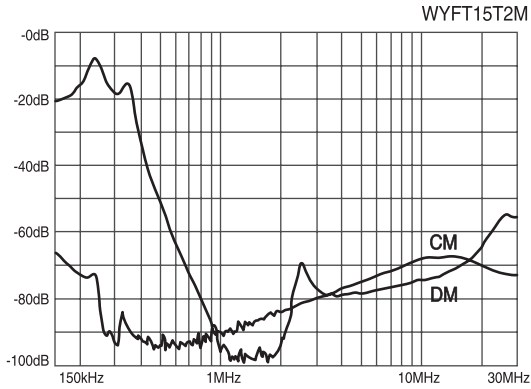
● Characteristics



※ CM : Common mode, DM : Differential mode

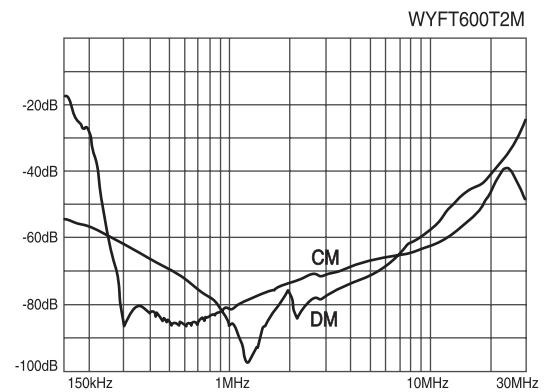
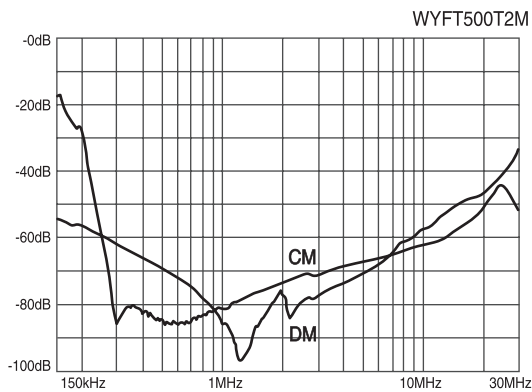
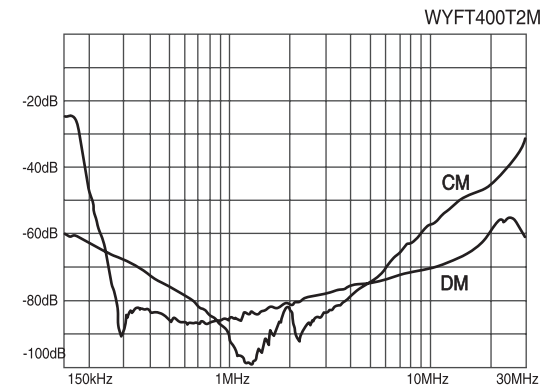
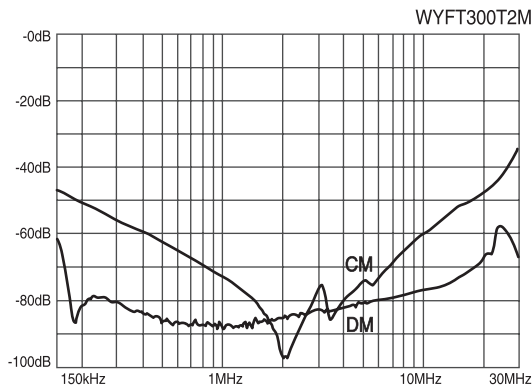
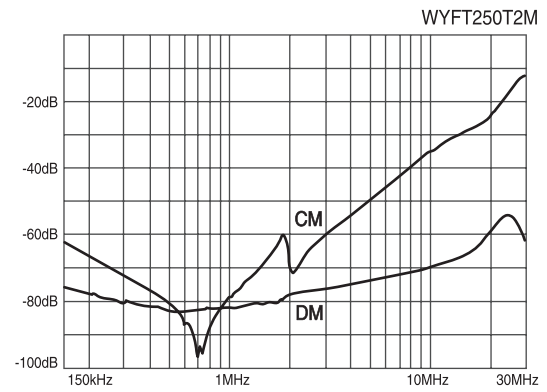
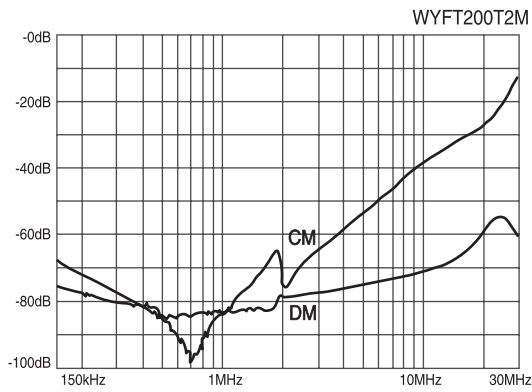
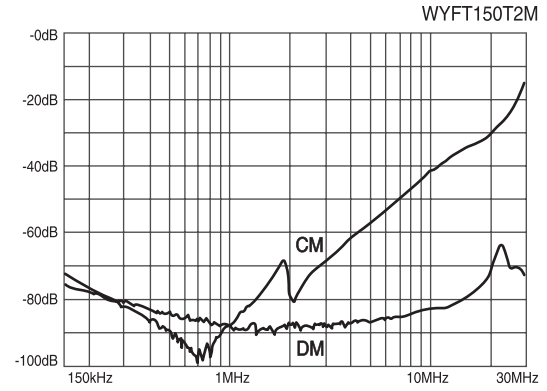
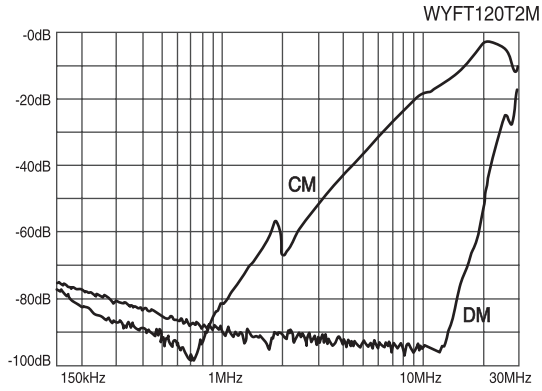
트랜스포머
REACTOR
리액터
무정전블레이
SSR
전력조정기
TPR
스위칭파워
SMP
노이즈 필터
N/F
하모닉 필터
H/F
서지보호기
SPD
보호계전기
RELAY
누전경보기
ELD=GF
R
영상변류기
ZCT
판넬메타
METER
계기용변성기
CT=VT
SHUNT=FA
선트팬

● Characteristics



※ CM : Common mode, DM : Differential mode

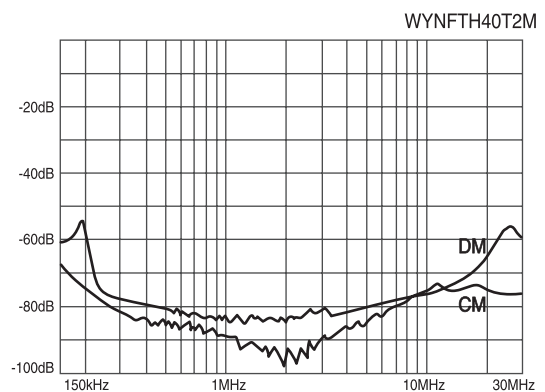
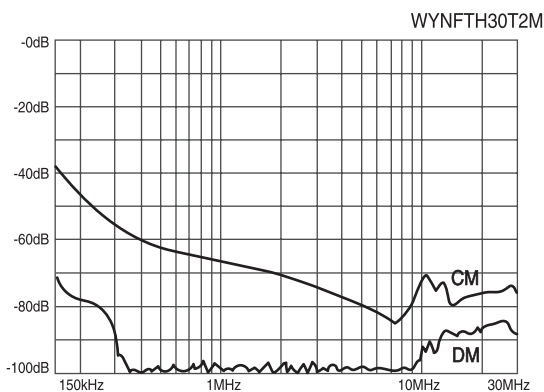
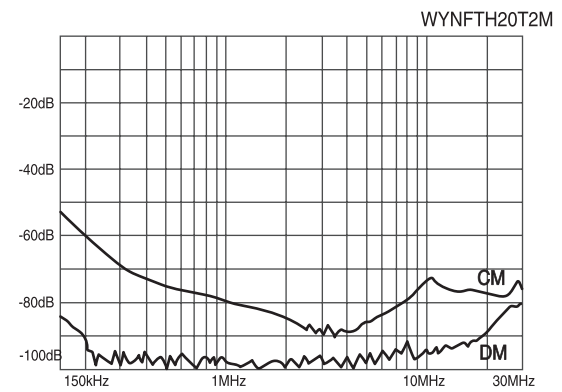
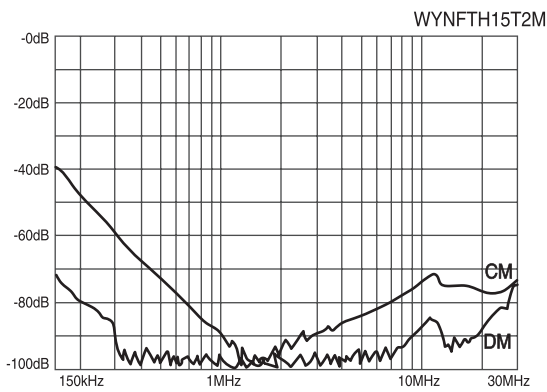
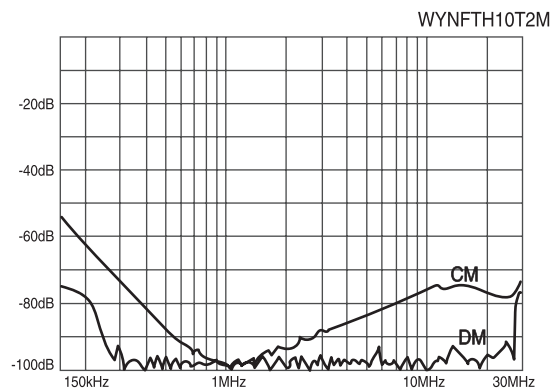
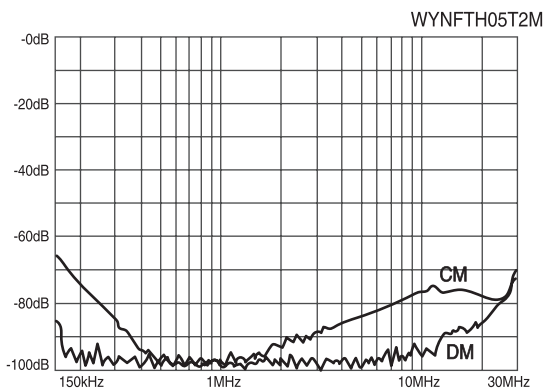
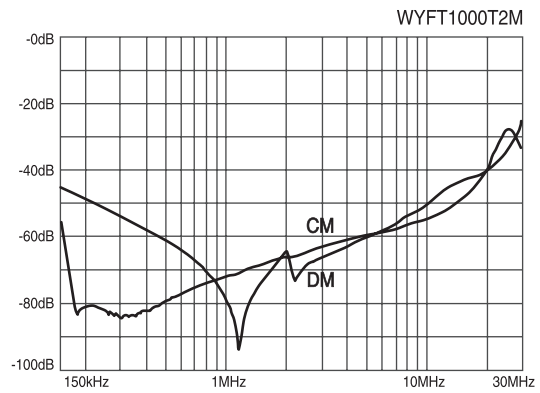
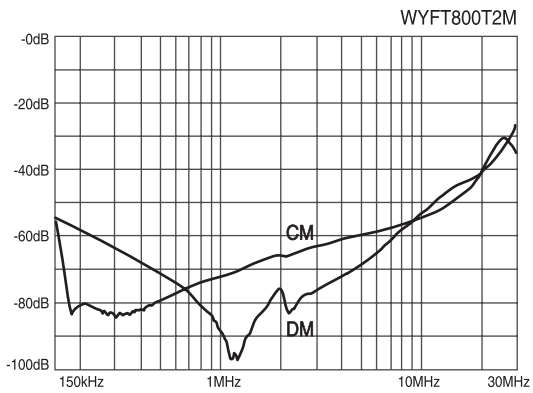
● Characteristics



※ CM : Common mode, DM : Differential mode

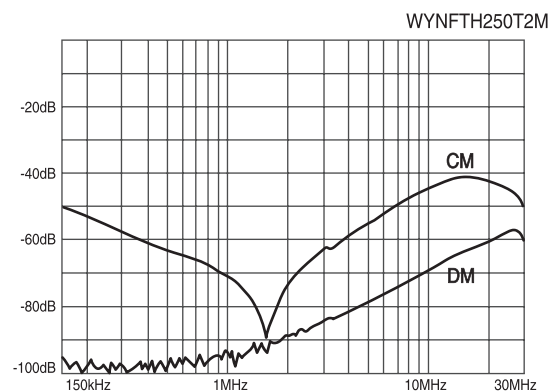
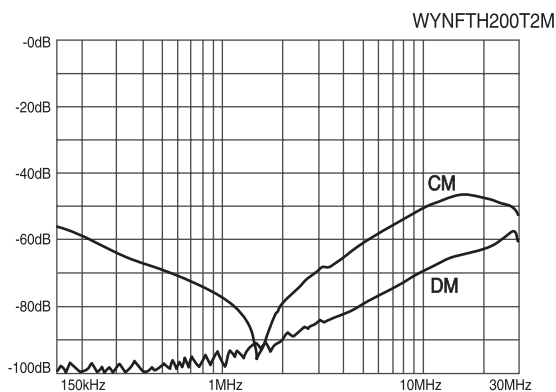
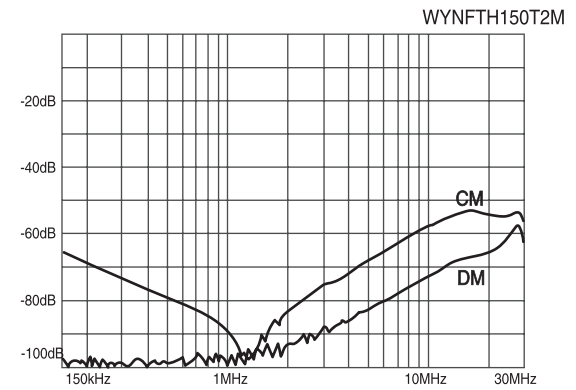
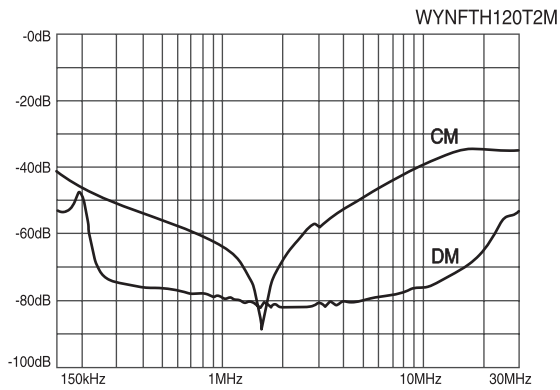
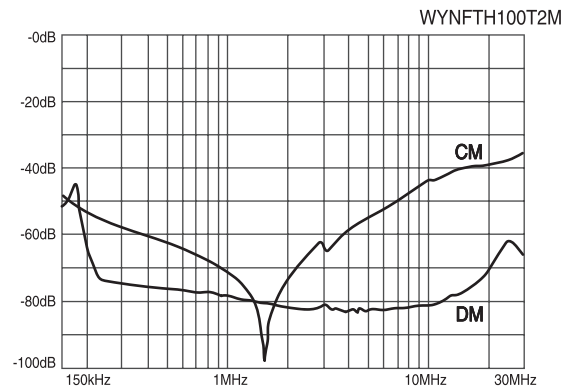
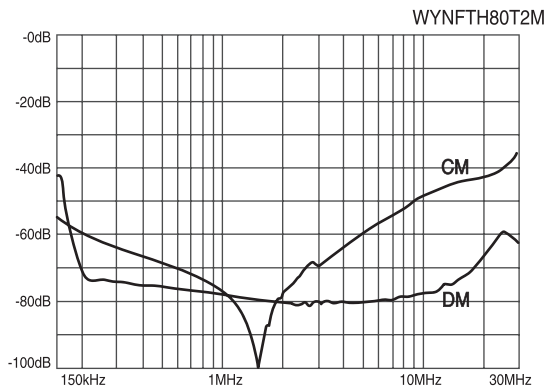
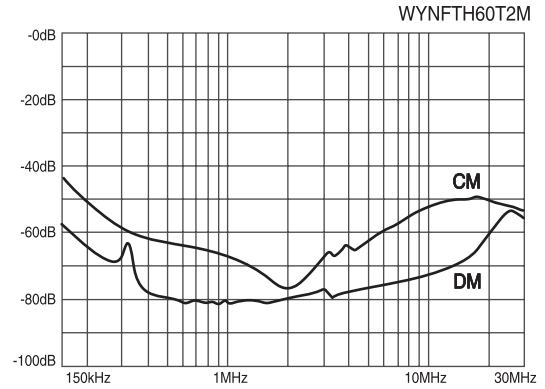
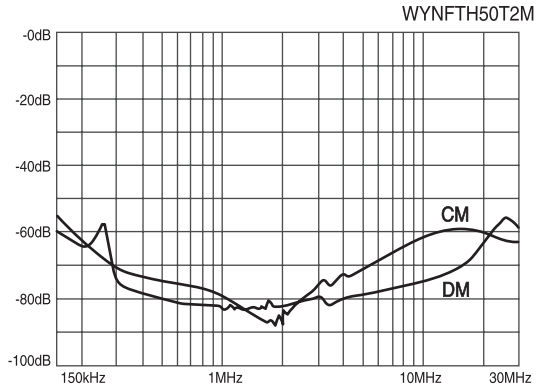
트랜스포머
REACTOR
리액터
무정전블레이
SSR
전력조정기
TPR
스입형파워
SMP
노이즈 필터
H/F
하모닉 필터
SPD
서지보호기
RELAY
보통계전기
E/LD=GF
R
영상변류기
ZCT
METER
판넬메타
CT=VT
계기용변성기
SHUNT=FA
N

● Characteristics



※ CM : Common mode, DM : Differential mode

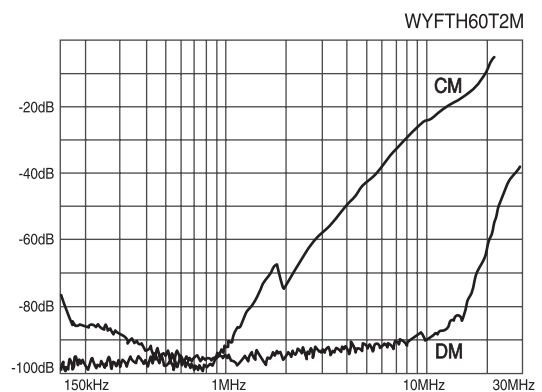
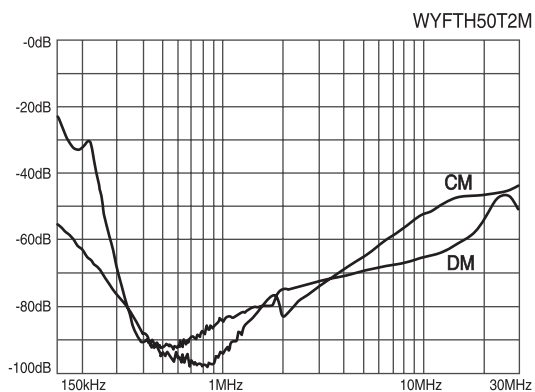
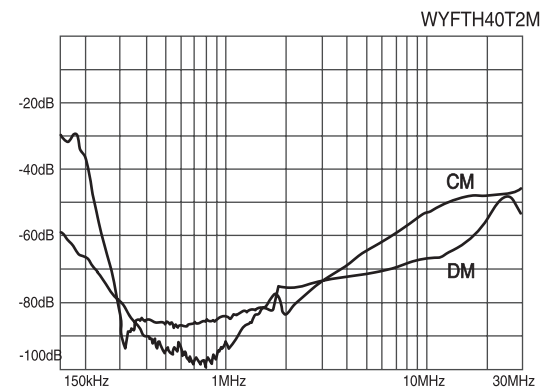
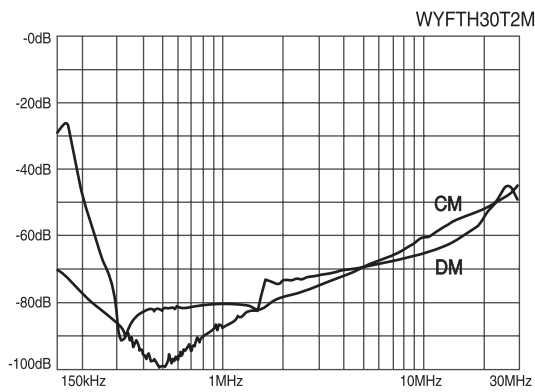
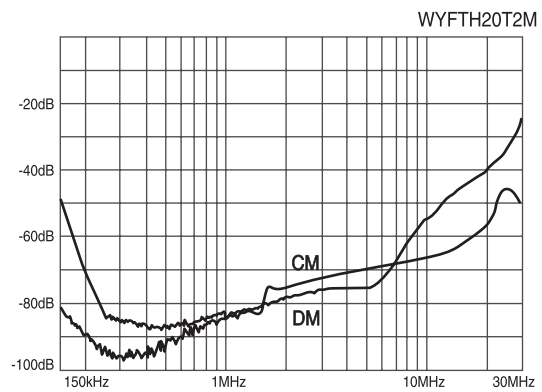
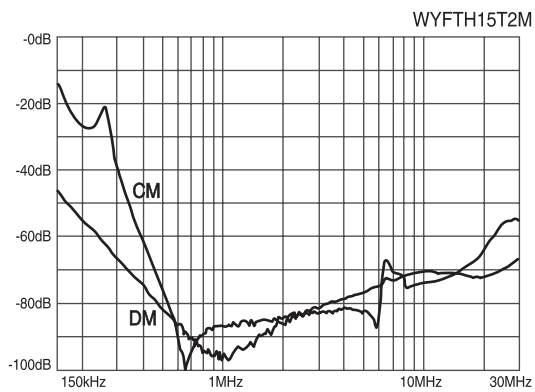
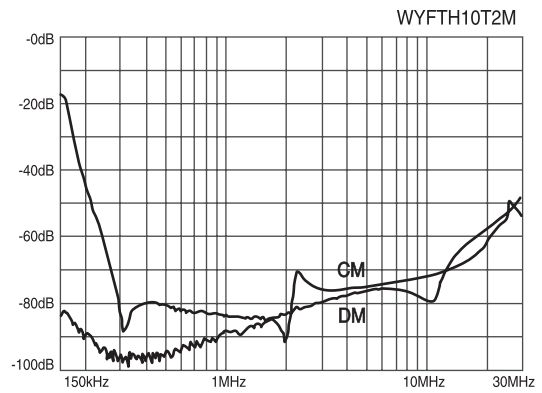
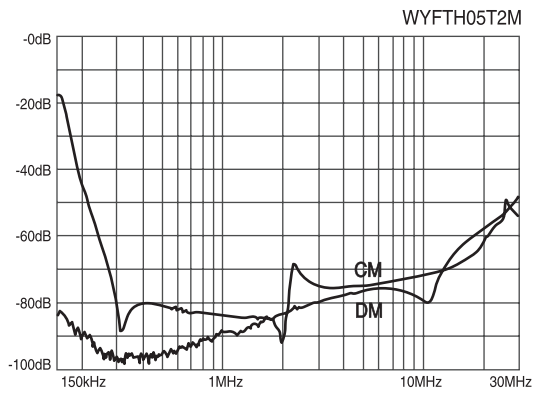
● Characteristics



※ CM : Common mode, DM : Differential mode

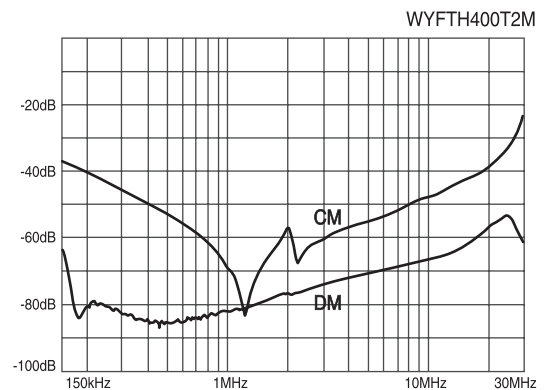
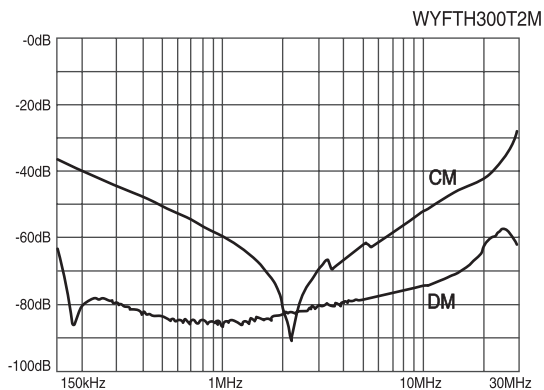
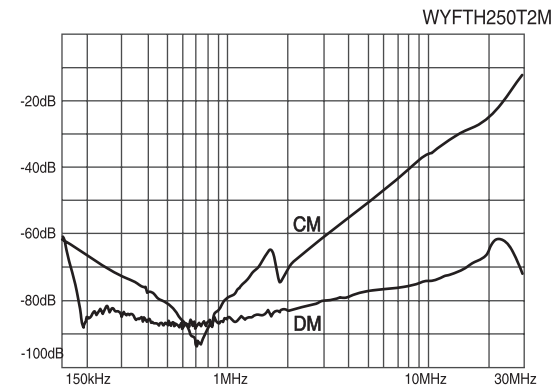
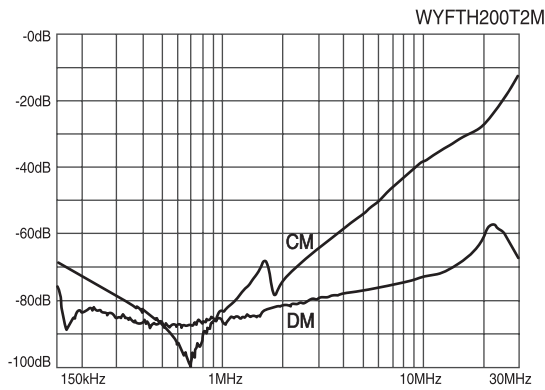
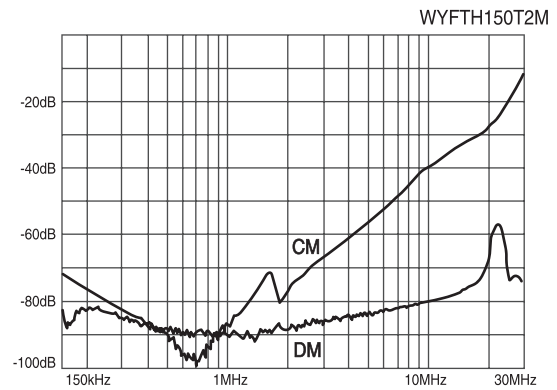
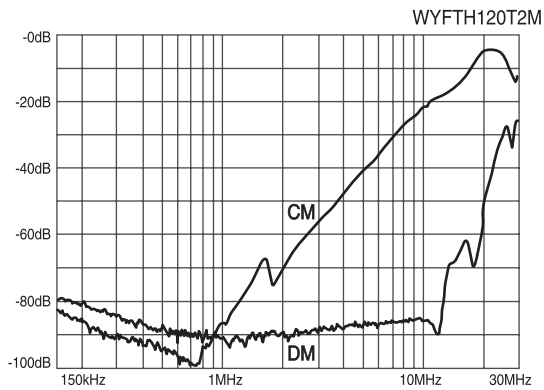
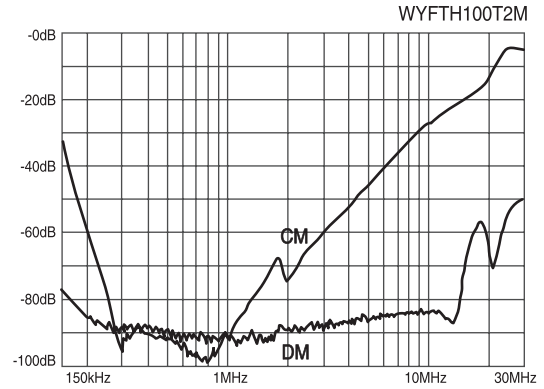
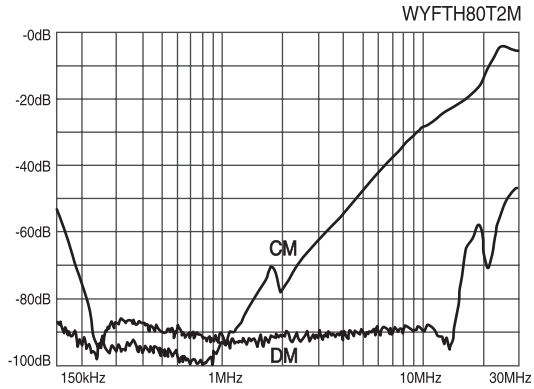
트랜스포머
REACTOR
리액터
무정전압 레이어
SSR
전력조정기
TPR
스위칭파워
SMP
S
노이즈 필터
N/F
하모닉 필터
H/F
서지보호기
SPD
보통계전기
RELAY
E
LD = G
F
R
영상변류기
ZCT
METER
판넬메타
계기용 변성기
CT = VT
SHUNT = FAN
선트팬

● Characteristics



※ CM : Common mode, DM : Differential mode

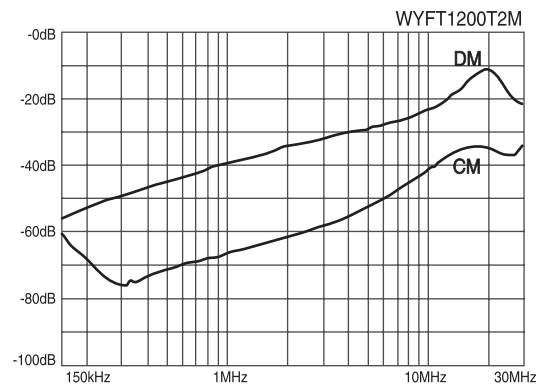
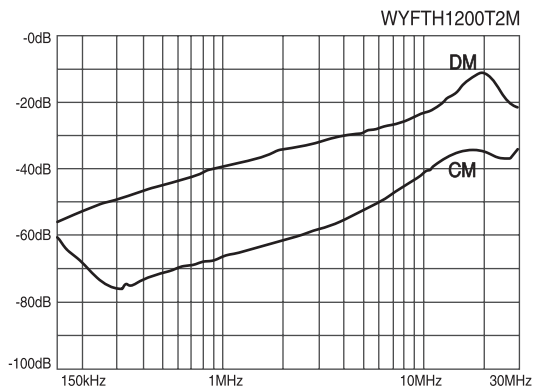
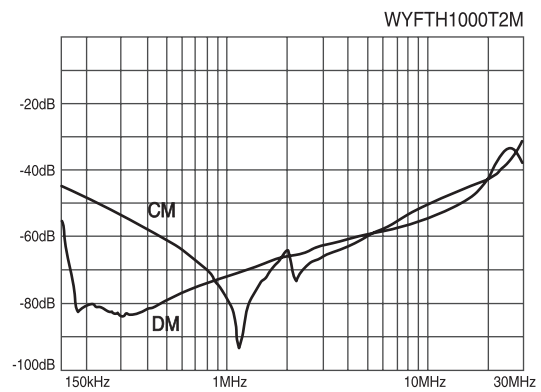
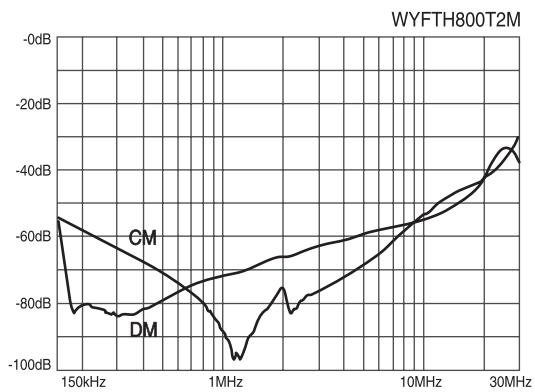
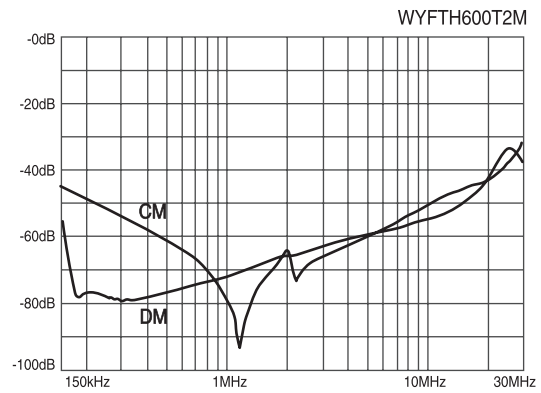
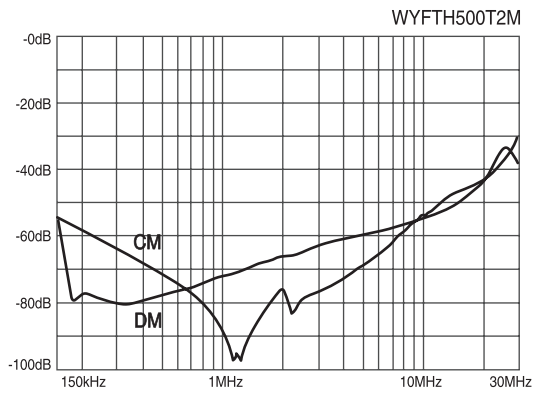
● Characteristics



※ CM : Common mode, DM : Differential mode

트랜스포머
REACTOR
리액터
무전선블레이
SSR
전력조정기
TPR
스위칭파워
SMP
노이즈 필터
N/F
하모닉 필터
H/F
서지보호기
SPD
보호계전기
RELAY
누전경보기
ELD=GF
R
영상변류기
ZCT
판넬메타
METER
계기용변성기
CT=VT
SHUNT=FAN
선트팬

● Characteristics



※ CM : Common mode, DM : Differential mode