

NOISE FILTER

1Ø DC 150V ~ 400V 보급형

DC
NOISE
FILTER



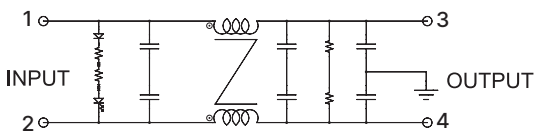
● Features

- 2 Mounting Option
 - WYF****D : Din Rail Mounting
 - WYF**** : Screw Mounting
- Wide Band : High Attenuation
- Band Width : 150KHz ~ 30MHz
- Low Leakage
- RoHS Compliant

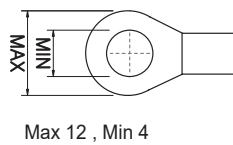
● Specifications

ITEM	MODEL	SYMBOL	WYFDU06T1A(D)	WYFDU10T1A(D)	WYFDU15T1A(D)	WYFDU20T1A(D)	WYFDU30T1A(D)
Rated Voltage	V		150VDC ~ 400VDC				
Rated Current	A		6	10	15	20	30
Dielectric Withstand	V		2500VAC or 2800VDC for 1 minute(Line-Case)				
Insulation Resistance	MΩ		DC 100MΩ at the 500Vdc				
Leakage Current	mA		≤0.8mA at the 250Vac				
Operating Temperature	°C		-25°C ~ +100°C [Refer to Derating Curve TYPE-1]				
Operating Humidity	RH		35 ~ 85%RH				
Weight	kg		0.3				

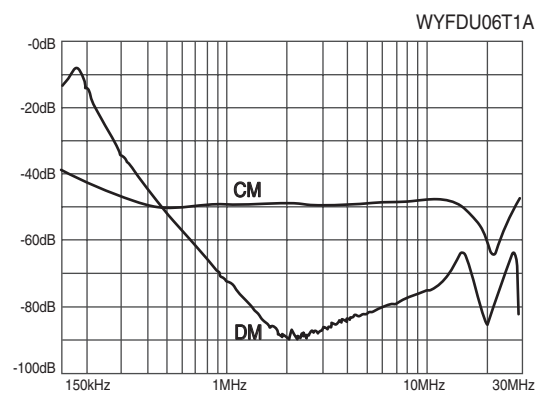
● Circuit Diagram



● Terminal



● Characteristics



● Dimension

