



● Features

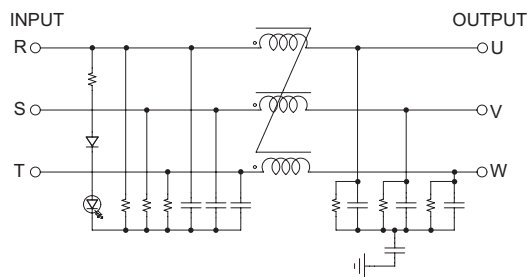
- Wide Band : High Attenuation
- Band Width : 150KHz ~ 30MHz
- Low Leakage
- RoHS Compliant
- Inverter Output Type : Model Type"C"
(WYFTH600T2C)
- WYFTH600T2A
: KC(HH03009-10001D) (Without "C" Type)

● Specifications

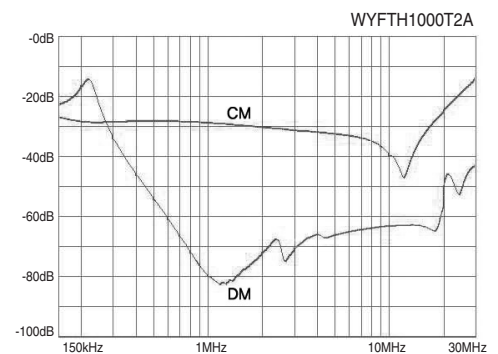
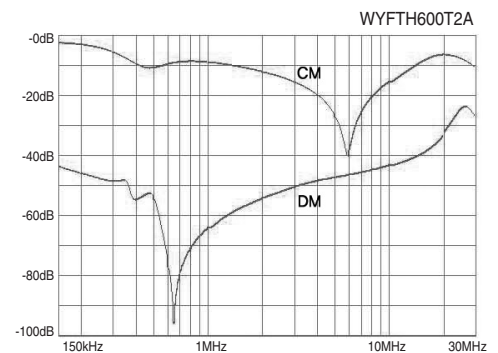
ITEM	MODEL	SYMBOL	WYFTH600T2A WYFTH600T2C	WYFTH800T2A WYFTH800T2C	WYFTH1000T2A WYFTH1000T2C	WYFTH1200T2A WYFTH1200T2C
Rated Voltage	V		500			
Rated Current	A		600	800	1000	1200
Frequency	Hz		50 / 60			
Dielectric Withstand	V		2500VAC or 2800VDC for 1 minute(Line-Case)			
Insulation Resistance	MΩ		500			
Leakage Current	mA		18			
Operating Temperature	°C		-25°C ~ +100°C [Refer to Derating Curve TYPE-2]			
Operating Humidity	RH		35 ~ 85%RH			
Weight	kg		12			

※ Derating Curve of page 519

● Circuit Diagram



● Characteristics



● Dimension

