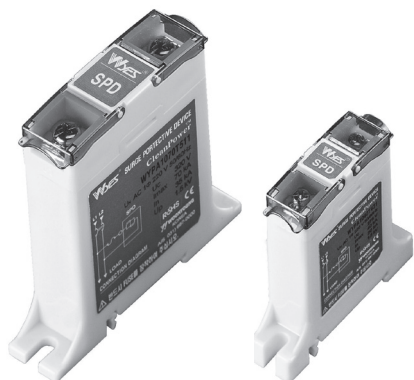
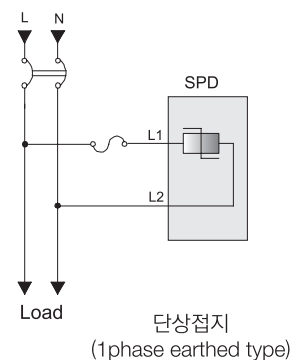


Surge Protective Device (SPD)

단상 일반형(1P2W) 110, 220, 380, 440V General type 2~70kA series



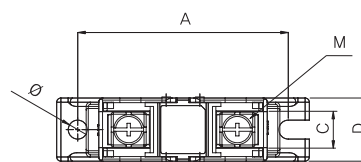
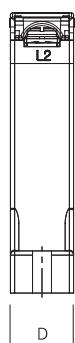
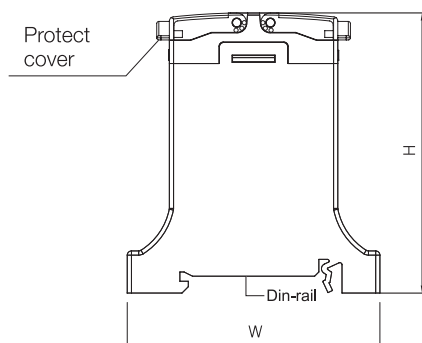
● Connection



● Specification

Model	Nominal voltage (Un)	Max. continuous operating voltage (Uc)	Max. discharge current (Imax)	Nominal discharge current (In)	Voltage protection level (Up)	Dimension	Weight (kg)
WYPA1002T012	DC12V	DC14V	2kA	1kA	<28V	A	0,04
WYPA1003T024	DC24V	DC45V	3kA	1,5kA	<64V		
WYPA1010T110	AC110V	AC130V	10kA	5kA	<1,5kV		
WYPA1010T220	AC220V	AC300V					
WYPA1010T380	AC380V	AC510V					
WYPA1010T440	AC440V	AC625V					
WYPA1015T110	AC110V	AC130V	15kA	7,5kA			
WYPA1015T220	AC220V	AC300V					
WYPA1015T380	AC380V	AC510V					
WYPA1015T440	AC440V	AC625V					
WYPA1025T110	AC110V	AC130V	25kA	12,5kA			
WYPA1025T220	AC220V	AC300V					
WYPA1025T380	AC380V	AC510V					
WYPA1025T440	AC440V	AC625V					
WYPA1040T110	AC110V	AC130V	40kA	20kA			
WYPA1040T220	AC220V	AC300V					
WYPA1040T380	AC380V	AC510V					
WYPA1040T440	AC440V	AC625V					
WYPA1070T110	AC110V	AC130V	70kA	35kA	B	0,07	
WYPA1070T220	AC220V	AC300V					
WYPA1070T380	AC380V	AC510V					
WYPA1070T440	AC440V	AC625V					

● Dimension



Type	W	D	H	A	C	M	Ø
A	60	15	66.5	50	8.5	M3.5	4.5
B	90	20	91.5	75	13	M5	5.5