

3-PHASE PHASE SEQUENCE DETECTOR

위상 판별기 Phase Sequence Detection



● 특징

이 제품은 500V까지 3상의 각상이 올바른지 위상을 감지하는 표시기로 3상 위상이 정상이면 녹색 (GREEN) LAMP (우측)가 점등되고 위상이 바뀌면 적색 (RED) LAMP (좌측)가 점등되어 정상 상태의 위상을 판별하는 표시기입니다.

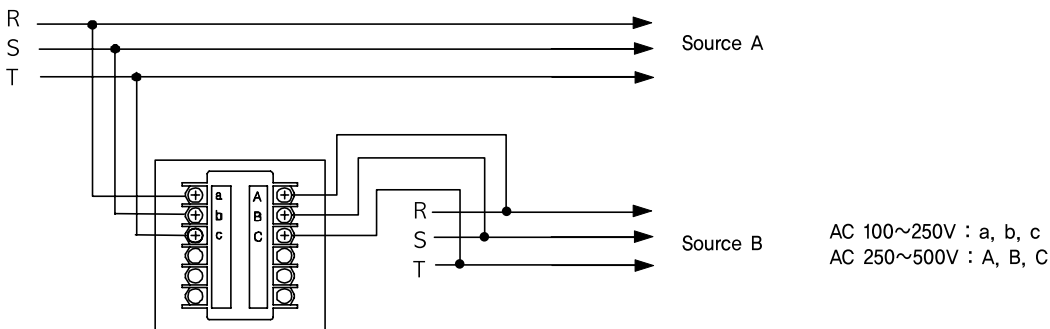
● Feature

This indicator is up to 500V three-phase sensing on each phase are correct. If phase sequence is correct, green lamp(right) will be lit, otherwise red lamp(left) glows. This indicator can display that phase sequence is correct or not.

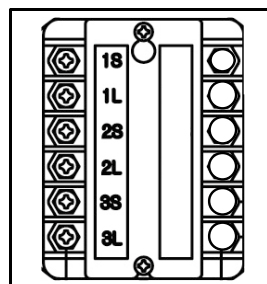
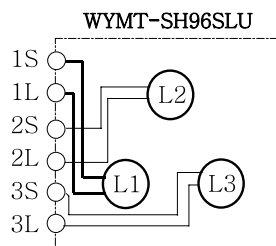
● Specifications

Part	3-Phase Sequence Detector
Type	WYMT-SH96PSD
Voltage	AC100~500V
Frequency	50/60Hz
Input Aux. Power	AC100~250V : a, b, c (Terminal) AC250 ~ 500V : A, B, C (Terminal) Burden : 3VA 10%
Normal	Green LED : R → S → T, S → T → R, T → R → S
Reverse	Red LED : S → R → T, T → S → R, R → T → S
Temperature	Operating Temperature -10 ~ 55°C RH < 95% Storage Temperature -20 ~ +70°C
Vibration Shock	Vibration Frequency : 16.7Hz , Double Amplitude : 0.4mm, Direction : Horizontal, Vertical, Transverse Shock Acceleration : 50G Shock Application Direction : Horizontal, Vertical, Transverse Shock Time : 3 Times
Weight	0,5kg

● Connection Diagram



상 동기 램프 표시기 Synchro Lamp Unit (WYMT-SH96SLU)



- Input Voltage : AC 220V
- Lamp : White (백색)



● Dimension

· WY-R Type Dimension

(Unit = mm)

Front view										
Rear view		Type	W	H	D	A	B	C	E	Ø
		WY-R08	80	80	36	15	34	30	64	65
		WY-R10	100	80	36	15	36	28	80	65

· WY-R Type Dimension

Front view										
Rear view		Type	W	H	D	A	B	C	E	Ø
		WY-R05	51	51	35	14	18	18	36	44
		WY-R06	60	60	35	14	24	24	48	54

· WY-S Type Dimension

(Unit = mm)

Front view										
Rear view		Type	W	H	D	A	B	C	X	Y
		WY-S47	48	48	44	5	44	12	44.5	44.5
		WY-S72	72	72	67	5	44	22	68	68
		WY-S96, SH96	96	96	91	5	44	22	92	92

· Mounting Introduction

WY-S47, WY-S96	WY-S72		WY-SH96	

TRANS

노이즈컷트렌스

무선접합릴레이

전력조정기

스마트파워

노이즈필터

고조파필터

서지보호기

보호계전기

누전경보기

지락계전기

영상변류기

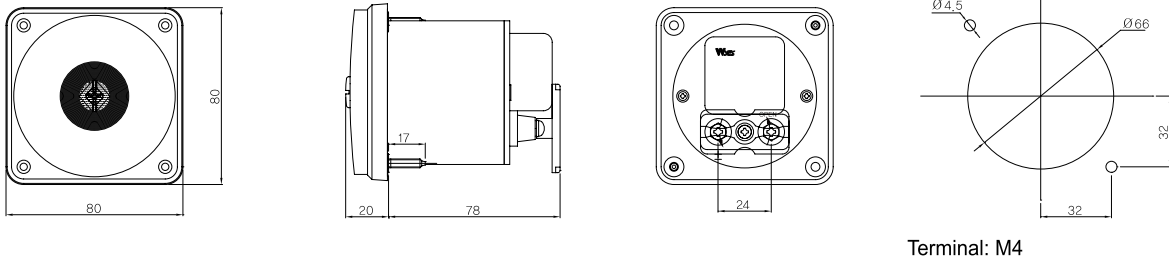
지시전기계기

계기용변성기

FAN

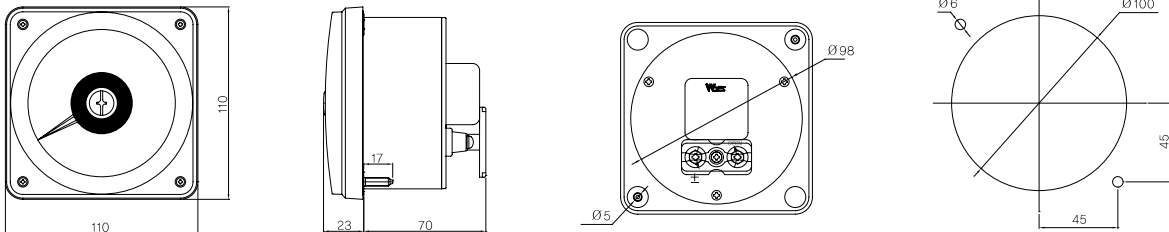
● Dimension

· WY-W08 Type Dimension



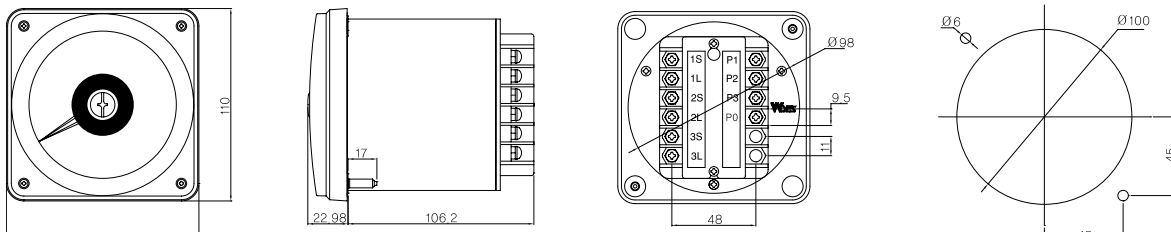
Terminal: M4

· WY-W11 A, V Type Dimension



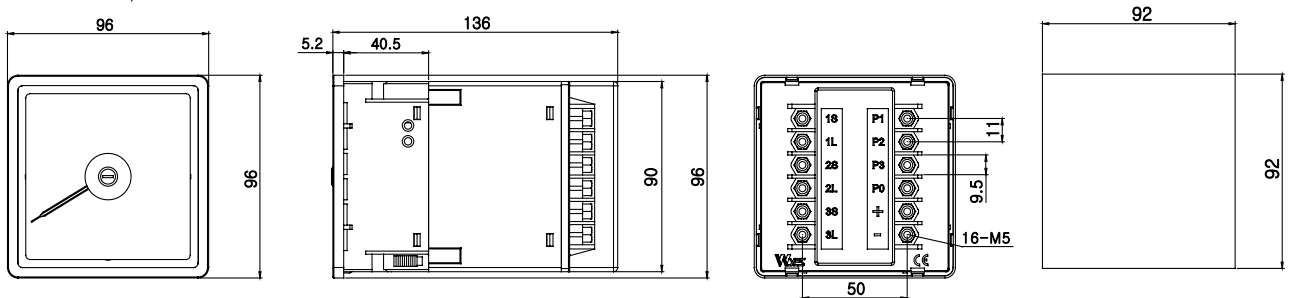
Terminal: M4

· WY-W11 KW, var, PF Type Dimension



Terminal: M4

· WY-SH96 KW, var PF Dimension



● 외부 변환기 사용

R, S, W08 타입의 Watt, var, Hz PF 계측기는 외부에 우측과 같은 변환기 (T/D) 를 사용합니다.

● External Transducers (For meter)

The Transducer for meter is used with the Watt, var and PF meter, etc., of the R type and S type or W08 type which is external transducer.

