

● Features

- 2 Mounting Option
 - WYF****D : Din Rail Mounting
 - WYF**** : Screw Mounting
- Wide Band : High Attenuation
- Band Width : 150KHz~30MHz
- Low Leakage
- RoHS Compliant

DIN RAIL 구조형

NSP TYPE

SP TYPE

2CH TYPE

3CH TYPE

BATTERY 충전기

MULTI ST. 고감쇄형

3P4W 전동

HIGH QUAL. 고품질

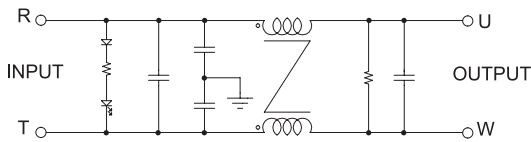
GENERAL 보급형

● Specifications

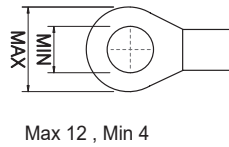
ITEM	MODEL	SYMBOL	WYFSH06T1A(D)	WYFSH10T1A(D)	WYFSH15T1A(D)	WYFSH20T1A(D)
Rated Voltage	V		500			
Rated Current	A		6	10	15	20
Frequency	Hz		50/60			
Dielectric Withstand	V		1500			
Insulation Resistance	MΩ		500			
Leakage Current	mA		1.6			
Operating Temperature	°C		-25°C ~ +100°C [Refer to Derating Curve TYPE-1]			
Operating Humidity	RH		35~85%RH			
Weight	kg		0.2			

※ "D" : DIN-Rail type of page 184 / Derating Curve of page 103

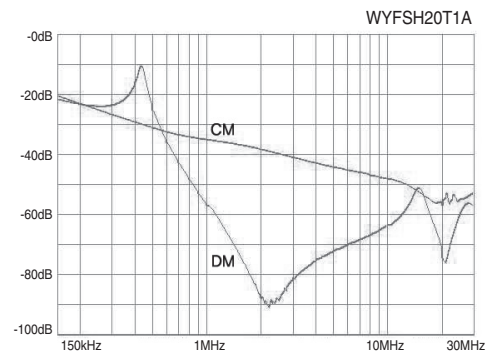
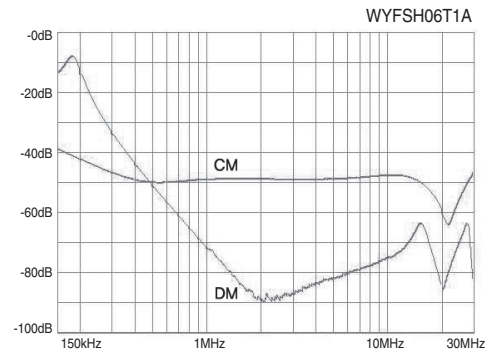
● Circuit Diagram



● Terminal



● Characteristics



● Dimension

