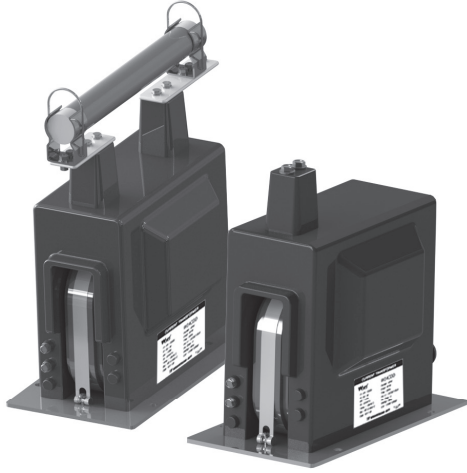


EARTHED TYPE (계기용변압기 / 접지형) VOLTAGE TRANSFORMER (EVT)

17.5~24(25.8)kV (0~200VA)

W24V1D(F) / W24V1D



EPOXY RESIN CASTING VOLTAGE TRANSFORMERS for highest voltage of equipment up to 24kV

W24V1D/W24V1D(F) 변압기는 최고회로전압 24kV급 절연성능으로 설계되어진 옥내용 에폭시몰드 제품으로 그 이하 전압(17.5kV) 제품에 대해서는 동일한 치수(DIMENSION)를 가진다. 안정적인 절연능력 및 전기적 특성을 갖으며, 기계적 안전성과 유지보수의 용이성이 우수한 제품이다. 또한 단일 또는 다중 탭을 갖는 제품으로 설계 가능합니다.

The W24V1D/W24V1D(F) voltage transformer is an indoor epoxy resin cast product designed in a maximum circuit voltage 24kV-class insulation performance, and has the same dimensions for the less voltage(17.5kV) product. This has a stable insulation capacity and electrical property, has excellent mechanical safety, and is easy to maintain. In addition, this can be designed in products with single of multiple taps.

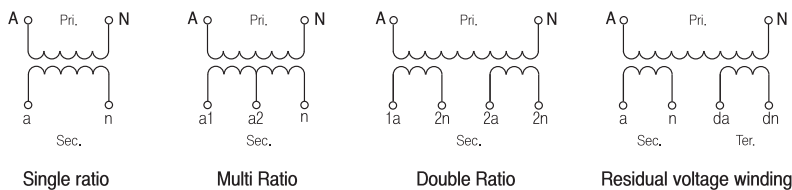
● Feature

규격 Standard	IEC - IEEE - KS - JEC etc.
설계 및 적용 Design and Application	계기 및 보호용 Designed for measuring and/or protection
사용조건 Service condition	옥내 Valid for indoor service
작업공정 Working process	- 자동진공주형방식 Automatic vacuum casting method - APG방식 Automatic Pressure Gelation method

● Electrical characteristic

ITEM	MODEL	
	W24V1D / W24V1D(F)	
Highest voltage for equipment (Um)	17.5kV	24(25.8)kV
Rated power-frequency withstand voltage (60sec)	38kV	50kV
Rated lighting Impulse withstand voltage (1.2/50μs)/full wave	95kV	125kV
Rated frequency	50Hz, 60Hz, others on request	
Rated Primary Voltage	13800/√3V, 22000/√3V, 22900/√3V	
Rated Secondary Voltage	110/√3V, 190/√3V, 380/√3V	
Rated Voltage factor	1.2Cont, 1.5/30s, 1.9/30s, 1.9/8h	
Thermal Limit Burden	800VA	
Insulation class (according to IEC 60085)	E	
Standard	According to customer requirements	
Temperature Category	According to customer requirements	
Weight (approx.)	30kg	

● Connection Diagram



EARTHED TYPE (계기용변압기 / 접지형) VOLTAGE TRANSFORMER (EVT)

17.5~24(25.8)kV (0~200VA)

● Specification

Highest voltage for equipment (Um)	Voltage Ratio (V)	IEC 61869-3			IEEE C57.13	
		Voltage Factor	Accuracy Class	Burden (VA)	Voltage Factor	Burden (VA)
17.5kV	$\frac{13800}{\sqrt{3}} / \frac{110}{\sqrt{3}} V$	1.2cont 1.9/8h	0.5, 1.0	50	0.3, 1.2	WX
			1.0	100		WY
24kV	$\frac{22000}{\sqrt{3}} / \frac{110}{\sqrt{3}} V$	1.2cont 1.9/8h	0.5, 1.0	50	0.3, 1.2	WX
			1.0	100		WY
25.8kV	$\frac{22900}{\sqrt{3}} / \frac{110}{\sqrt{3}} (-\frac{190}{\sqrt{3}}) V$	1.2cont 1.5/30sec	0.5, 1.0	50	0.3, 1.2	M
			1.0	100		
			1.0	200		
		1.2cont 1.9/30sec	0.5, 1.0	50	0.6, 1.2	Y
			1.0	100		
		1.2cont 1.9/8h	0.5, 1.0	50	1.2	Z
1.0	100					
17.5kV	$\frac{13800}{\sqrt{3}} / \frac{110}{\sqrt{3}} / \frac{190}{3} V$	1.2cont 1.9/8h	0.5/3P	100/200	-	-
			1.0/3P	200/200		
24kV	$\frac{22900}{\sqrt{3}} / \frac{110}{\sqrt{3}} / \frac{110}{3} V$	1.2cont 1.9/8h	1.0/3P	100/200	-	-
				200/200		
25.8kV	$\frac{22900}{\sqrt{3}} / \frac{110}{\sqrt{3}} (-\frac{190}{\sqrt{3}}) / \frac{110}{3} V$	1.2cont 1.5/30sec	1.0/3P	100/100	-	-
				100/200		
				50/100		
		1.2cont 1.9/30sec	1.0/3P	100/100		
				100/200		
		1.2cont 1.9/8h	1.0/3P	50/100		
100/100						

HV / C T
고압변류기

HV / VT : MOF
고압변압기

LV / C T
저압변류기

LV / VT
저압변압기

RELA Y
보통계전기

E L D
누전경보기

G F R
지락계전기

Z C T
영상변류기

M E T E R
지시전기계기

S H U N T
셔트

● Dimension

* FUSE

Rated Voltage : 24kV
Rated Current : 1A

