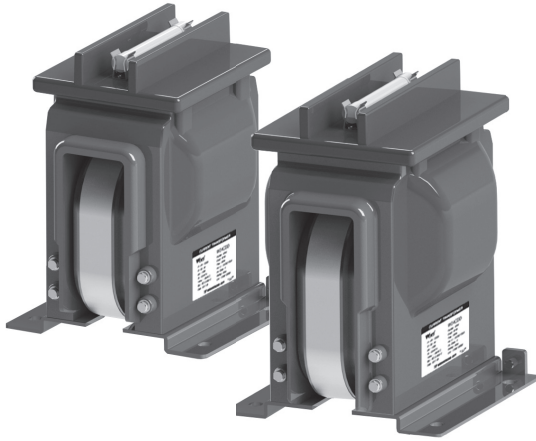


# EARTHED TYPE (계기용변압기 / 접지형) VOLTAGE TRANSFORMER (EVT)

3.6~12kV (0~200VA)

## W12V1A / W12V1B



### EPOXY RESIN CASTING VOLTAGE TRANSFORMERS for highest voltage of equipment up to 12kV

W12V1A, W12V1B 변압기는 최고회로전압 12kV급 절연성능으로 설계되어진 옥내용 에폭시몰드 제품으로 그 이하 전압(3.6, 7.2kV) 제품에 대해서는 동일한 치수 (DIMENSION)를 가진다. 안정적인 절연능력 및 전기적 특성을 갖으며, 기계적 안전성과 유지보수의 용이성이 우수한 제품이다. 또한 단일 또는 다중 탭을 갖는 제품으로 설계 가능합니다.

The W12V1A, W12V1B voltage transformer is an indoor epoxy resin cast product designed in a maximum circuit voltage 12kV-class insulation performance, and has the same dimensions for the less voltage(3.6, 7.2kV) product. This has a stable insulation capacity and electrical property, has excellent mechanical safety, and is easy to maintain.

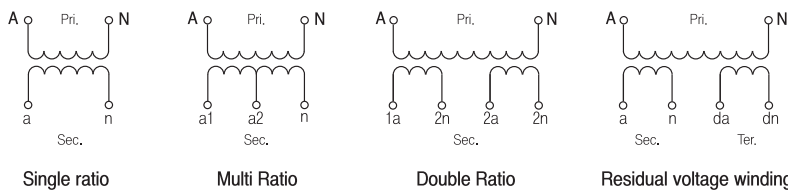
#### ● Feature

|                                   |  |
|-----------------------------------|--|
| 규격<br>Standard                    | IEC - IEEE - KS etc.   |
| 설계 및 적용<br>Design and Application | 계기 및 보호용<br>Designed for measuring and/or protection   |
| 사용조건<br>Service condition         | 옥내<br>Valid for indoor service   |
| 작업공정<br>Working process           | - 자동진공주형방식<br>Automatic vacuum casting method<br>- APG방식<br>Automatic Pressure Gelation method |

#### ● Electrical characteristic

| ITEM   | MODEL                              |       |      |
|--|------------------------------------|-------|------|
|  | W12V1A / W12V1B                    |       |      |
| Highest voltage for equipment (Um)                           | 3.6kV                              | 7.2kV | 12kV |
| Rated power-frequency withstand voltage (60sec)              | 10kV                               | 20kV  | 28kV |
| Rated lighting Impulse withstand voltage (1.2/50μs)full wave | 40kV                               | 60kV  | 75kV |
| Rated frequency  | 50Hz, 60Hz, others on request      |       |      |
| Rated Primary Voltage  | $11000/\sqrt{3} V$                 |       |      |
| Rated Secondary Voltage                                      | $110/\sqrt{3} V, 190/\sqrt{3} V$   |       |      |
| Rated Voltage factor   | 1.2Cont, 1.5/30s, 1.9/30s, 1.9/8h  |       |      |
| Thermal Limit Burden   | 700VA                              |       |      |
| Insulation class (according to IEC 60085)                    | E                                  |       |      |
| Standard   | According to customer requirements |       |      |
| Temperature Category   | According to customer requirements |       |      |
| Weight (approx.)   | 22kg                               |       |      |

#### ● Connection Diagram



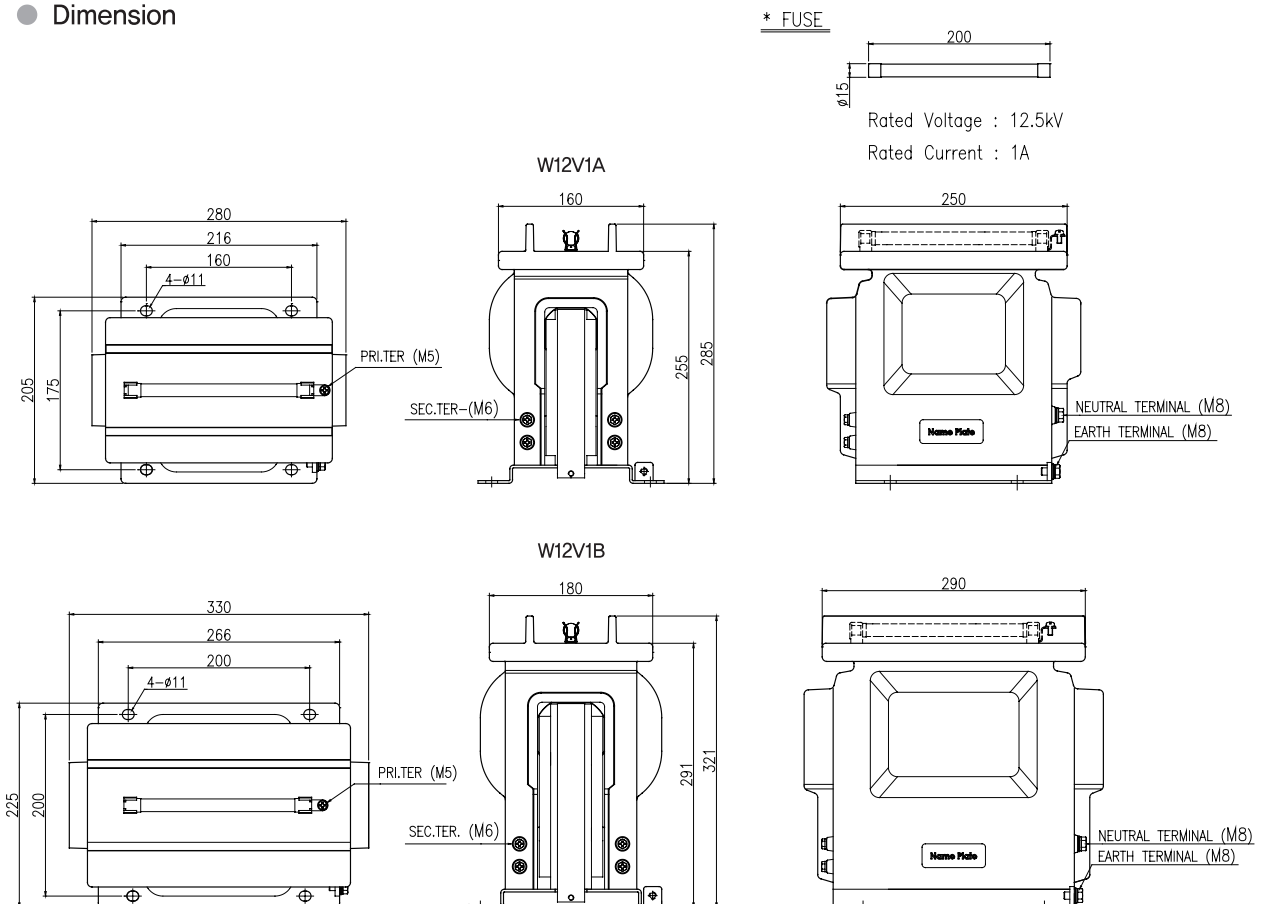
# EARTHED TYPE (계기용변압기 / 접지형) VOLTAGE TRANSFORMER (EVT)

3.6~12kV (0~200VA)

## ● Specification

| ITEM   | Highest voltage for equipment (Um)                              | Voltage Ratio (V)                               | IEC 61869-3    |   |                     | IEEE C57.13    |                    |                    |     |
|--------|---|---|----------------|---|---------------------|----------------|--------------------|--------------------|-----|
|        |   |   | Accuracy Class | Burden (VA)   | Voltage Factor      | Accuracy Class | Burden (VA)        |                    |     |
| W12V1A | 12kV  | $\frac{11000}{\sqrt{3}} / \frac{110}{\sqrt{3}}$ | 0.2            | 50  | 1.2Con't<br>1.5/30s | 0.3            | M                  |                    |     |
|        |   |   | 0.5            | 100   |                     |                |                    |                    |     |
|        |   |   | 1.0            | 200   |                     |                |                    |                    |     |
|        |   |   | 0.2            | 30  | 1.2Con't<br>1.9/8h  | 0.6            | Y                  |                    |     |
|        |   |   | 0.5            | 100   |                     |                |                    |                    |     |
|        |   |   | 1.0            | 200   |                     |                |                    |                    |     |
| 12kV   | $\frac{11000}{\sqrt{3}} / \frac{110}{\sqrt{3}} / \frac{190}{3}$ | 0.2/3P  | 30/100         | 1.2Con't<br>1.9/8h  | -                   | -              |                    |                    |     |
|        |   | 0.5/3P  | 100/100        |   |                     |                |                    |                    |     |
|        |   | 1.0/3P  | 200/100        |   |                     |                |                    |                    |     |
| W12V1B | 12kV  | $\frac{11000}{\sqrt{3}} / \frac{110}{\sqrt{3}}$ | 0.2            | 75  | 1.2Con't<br>1.5/30s | 0.3            | Y                  |                    |     |
|        |   |   | 0.5            | 200   |                     |                |                    |                    |     |
|        |   |   | 0.2            | 50  |                     |                |                    | 1.2Con't<br>1.9/8h | 0.6 |
|        |   |   | 0.5            | 200   |                     |                |                    |                    |     |
|        |   |   | 12kV           | $\frac{11000}{\sqrt{3}} / \frac{110}{\sqrt{3}} / \frac{190}{3}$ | 0.2/3P              | 50/200         | 1.2Con't<br>1.9/8h |                    |     |
|        |   |   |                |   | 0.5/3P              | 200/200        |                    |                    |     |

## ● Dimension



HV / C T  
고압변류기

HV / VT : MO F  
고압변압기

LV / C T  
저압변류기

LV / VT  
저압변압기

RELA Y  
보통계전기

E L D  
누전경보기

G F R  
지락계전기

Z C T  
영상변류기

M E T E R  
지시전기계기

S H U N T  
선틀