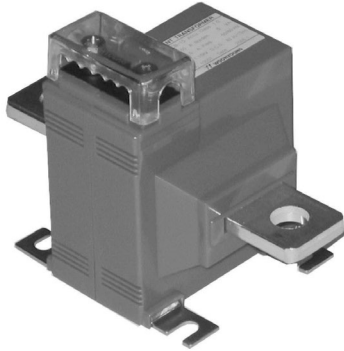


WINDING TYPE (권선형) CURRENT TRANSFORMER

0.72~1.2kV (5~500A)



- Standard :KS C 1706, IEC 61869-2, JEC 1201, IEEE C 57.13



● Specifications

- busbar type
- Maximum voltage : 0.72~1.2kV
- Over current strength : 40In/1sec.
- Frequency : 50Hz or 60Hz
- Case : Poly carbonate (PC)

● Features

- Protect cover
- Easy to install panel mounting kit

● Single Ratio Type

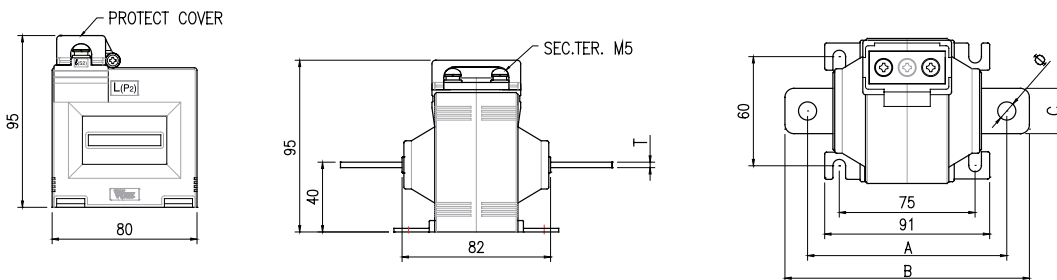
MODEL	Primary (A)	Secondary (A)	Burden (VA)	Class (%)	Weight (kg)
WYCB-151	5~150	5 or 1	5~15	1.0	≒0.5
WYCB-152	200~300				≒0.6
WYCB-153	400~500				≒0.7

● Double Ratio Type

MODEL	Primary (A)	Secondary (A)	Burden (VA)	Class (%)	Weight (kg)
WYCB-151D	10~150 (5~75)	5 or 1	5~15	1.0	≒0.5
WYCB-152D	200~300 (100~150)				≒0.6
WYCB-153D	400~500 (200~250)				≒0.7

※ Apply rated current burden to 1 tap

● Illustration & Drawing



● Dimension

MODEL	A	B	C	T	Ø
WYCB-151/151D	110	135	25	3	10
WYCB-152/152D	115	145	30	6	13
WYCB-153/153D	120	150	40	8	13

● Connection Diagram

