

# POST BUSBAR TYPE (부스바 관통형) CURRENT TRANSFORMER

7.2~12kV (400~4000A / 100In)

## W12CPA



### EPOXY RESIN CASTING CURRENT TRANSFORMERS for highest voltage of equipment up to 12kV

W12CPA 변류기는 최고 회로전압 12kV급 절연성능으로 설계되어진 옥내용 에폭시물드 제품으로 그 이하 전압(7.2kV) 제품에 대해서는 동일한 치수(DIMENSION)를 가진다. 본 제품은 설치공간이 협소한 고압배전반에 매우 적합한 제품이다. 또한 1core 및 2 core의 단일 비 또는 다중 비 형태의 제품으로 설계 및 제작이 가능합니다.

The W12CPA current transformer is an indoor epoxy resin cast product designed in a maximum circuit voltage 12kV-class insulation performance, and the less voltage(7.2kV) product has the same dimensions. This product is very suitable for standard switchboards installed in a narrow space. In addition, this can be designed and fabricated in a single or multiple ratio type such as 1 core and 2 cores.

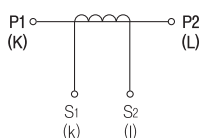
#### ● Feature

|                                   |  |
|-----------------------------------|--|
| 규격<br>Standard                    | IEC - IEEE - KS  |
| 설계 및 적용<br>Design and Application | 계기 및 보호용<br>Designed for measuring and/or protection   |
| 사용조건<br>Service condition         | 옥내<br>Valid for indoor service   |
| 작업공정<br>Working process           | - 자동진공주형방식<br>Automatic vacuum casting method<br>- APG방식<br>Automatic Pressure Gelation method |

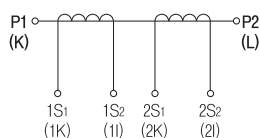
#### ● Electrical characteristic

| ITEM   | MODEL                              |      |
|--|------------------------------------|------|
|  | W12CPA                             |      |
| Highest voltage for equipment (Um)                           | 7.2kV                              | 12kV |
| Rated power-frequency withstand voltage (60sec)              | 20kV                               | 28kV |
| Rated lighting impulse withstand voltage (1.2/50μs)full wave | 60kV                               | 75kV |
| Rated frequency  | 50 / 60Hz                          |      |
| Rated primary current(Ipr)                                   | 400 to 4000A                       |      |
| Rated secondary current(Isr)                                 | 5 or 1A                            |      |
| Rated continuous thermal current                             | 120%                               |      |
| Rated short-time thermal current Ith (1sec)                  | 100In                              |      |
| Rated dynamic current Idyn (2.5×Ith)                         | 100kA                              |      |
| Insulation class (according to 60085)                        | E                                  |      |
| Standard   | According to customer requirements |      |
| Weight (approx.)   | 24kg                               |      |

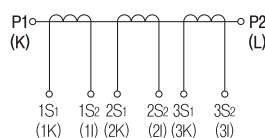
#### ● Connection Diagram



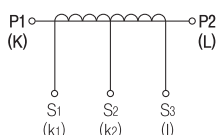
1 - Core Single ratio



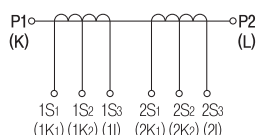
2 - Core Single ratio



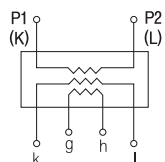
3 - Core Single ratio



1 - Core Double ratio



2 - Core Double ratio



1 - Core 3rd winding

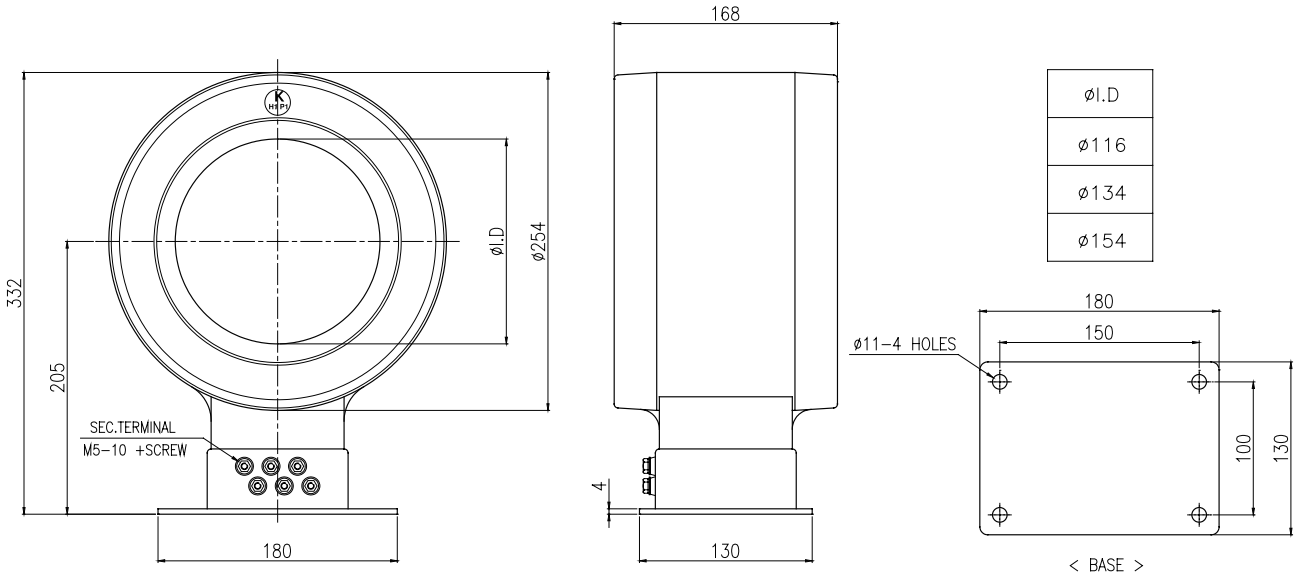
# POST BUSBAR TYPE (부스바 관통형) CURRENT TRANSFORMER

7.2~12kV (400~4000A / 100In)

## ● Specification

| ITEM                                   | Rated short time current | Current Ratio                         | Service                     | IEC 61869-2 |                |                     | IEEE C57.13    |                |                     | KSC 1706           |                |                     |
|--|--------------------------|---------------------------------------|-----------------------------|-------------|----------------|---------------------|----------------|----------------|---------------------|--------------------|----------------|---------------------|
|  |                          |                                       |                             | Burden      | Accuracy Class | Over Current Factor | Burden         | Accuracy Class | Over Current Factor | Burden             | Accuracy Class | Over Current Factor |
| 12C-PA<br>1-Core<br>Single<br>Ratio CT | 100In                    | 400/5A~1500/5A                        | Metering                    | 15VA        | 1.0            | FS10                | 12.5VA (B-0.5) | 1.2            | -                   | 15VA               | 1.0            | -                   |
|  |                          |                                       |                             | 30VA        | 1.0            | FS10                | 22.5VA (B-0.9) | 1.2            | -                   | 25VA               | 0.5,1.0        | -                   |
|  |                          | 1600/5A~2000/5A                       | Protection                  | 15VA        | 5P10           | 30                  | 45VA (B-1.8)   | 1.2            | -                   | 40VA               | 1.0            | -                   |
| 2500/5A~4000/5A                        | 30VA                     | 5P10                                  |                             | 20          | 25VA (B-1)     | C-100               | -              | 15VA           | 1P                  | n)30               |                |                     |
| 12C-PA<br>1-Core<br>Double<br>Ratio CT | 100In                    | 700-350/5A~1600-800/5A                | Metering                    | 15VA        | 1.0            | FS10                | 12.5VA (B-0.5) | 1.2            | -                   | 15VA               | 1.0            | -                   |
|  |                          |                                       |                             | 30VA        | 1.0            | FS10                | 22.5VA (B-0.9) | 1.2            | -                   | 25VA               | 1.0            | -                   |
|  |                          | 2000-1000/5A                          | Protection                  | 15VA        | 5P, 10P        | 30                  | 45VA (B-1.8)   | 1.2            | -                   | 40VA               | 1.0            | -                   |
| 2500-1250/5A~4000-2500/5A              | 30VA                     | 5P, 10P                               |                             | 20          | 25VA (B-1)     | C-100               | -              | 15VA           | 1P                  | n)30               |                |                     |
| 12C-PA<br>2-Core<br>Single<br>Ratio CT | 100In                    | 1000/5-5A~3000/5-5A                   | Metering<br>(1st core)      | 15VA        | 1.0            | FS10                | 12.5VA (B-0.5) | 1.2            | -                   | 15VA               | 1.0            | -                   |
|  |                          |                                       |                             | 30VA        | 1.0            | FS10                | 22.5VA (B-0.9) | 1.2            | -                   | 25VA               | 1.0            | -                   |
|  |                          |                                       | Protection<br>(2nd core)    | 15VA        | 5P, 10P        | 20                  | 25VA (B-1)     | C-100          | -                   | 15VA               | 1P             | n)30                |
| 30VA                                   | 5P, 10P                  | 20                                    |                             | 50VA (B-2)  | C-200          | -                   | 25VA           | 1P             | n)20                |                    |                |                     |
| 12C-PA<br>3rd<br>Winding<br>CT         | 100In                    | 1000/5A 100/5A<br>~<br>4000/5A 100/5A | Protection<br>(3rd Winding) | -           | -              | -                   | -              | -              | -                   | 15/15VA<br>40/15VA | 1P/5G          | n)30<br>n)20        |

## ● Dimension



H  
V  
/  
C  
T  
고압변류기

H  
V  
/  
V  
T  
·  
M  
O  
F  
고압변압기

L  
V  
/  
C  
T  
저압변류기

L  
V  
/  
V  
T  
저압변압기

R  
E  
L  
A  
Y  
보통계전기

E  
L  
D  
누전경보기

G  
F  
R  
지락계전기

Z  
C  
T  
영상변류기

M  
E  
T  
E  
R  
지시전기계기

S  
H  
U  
N  
T  
선티