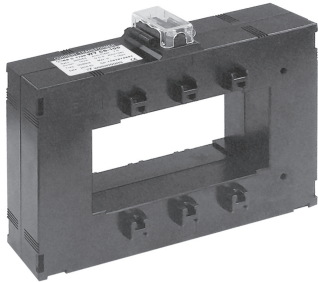


METERING TYPE (부스바 관통형 / 계기용) CURRENT TRANSFORMER

0.72~1.2kV (1200~6000A)



- Standard :KS C 1706, IEC 61869-2, JEC 1201, IEEE C 57.13



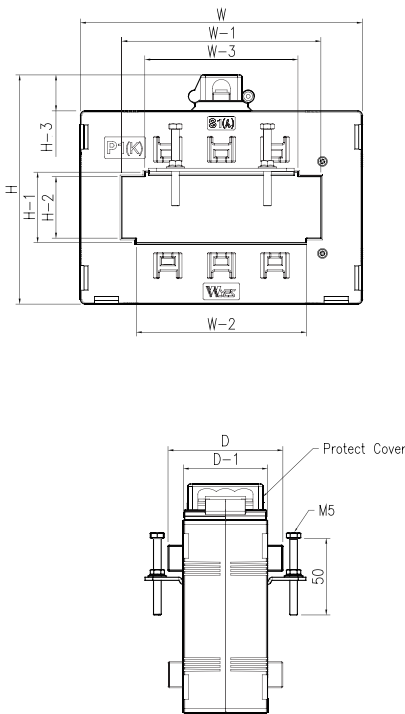
● Specifications

- Square type C,T(Busbar installing type)
- Maximum voltage : 0.72~1.2KV
- Over current strength : 40In/1sec.
- Frequency : 50Hz or 60Hz
- Case : Poly carbonate (PC)

● Features

- Protect cover
- Easy to install panel mounting kit

● Illustration & Drawing



● Single Ratio Type

Model	Primary (A)	Secondary (A)	Burden (VA)	Class (%)	Weight (kg)
WYCS-125	1200	5 or 1	15, 40	0.5 or 1	≒3.0
	1500				
	2000				
WYCS-135	2500				
	3000				
	3200				
	3500				
	4000				
WYCS-165	2500				
	3000				
	3200				
	3500				
	4000				
	5000				
6000					
					≒3.8
					≒4.1

● Dimension

(mm)

Model	W	W-1	W-2	W-3	H	H-1	H-2	H-3	D	D-1
WYCS-125	184	130	111	100	149.5	46	40	23.5	74.8	54.8
WYCS-135	185.4	134.6	109.6	98.6	177.2	59.6	53.6	23.5	75	55
WYCS-165	256.4	158.6	134.6	108.6	199.2	80.6	74.6	23.8	74.5	54.5

• Connection Diagram

