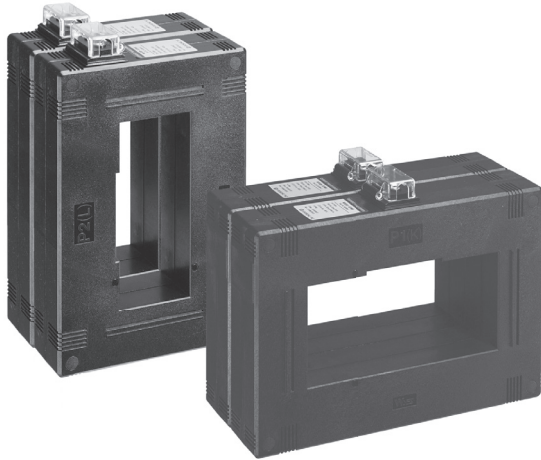


# PROTECTION RELAY TYPE (부스바관통형/계기용및 전기용) CURRENT TRANSFORMER

0.72~1.2kV (150~6000A)



- Standard :KS C 1706, IEC 61869-2, JEC 1201, IEEE C 57.13



## ● Specifications

- Square type C,T(Busbar installing type)
- Maximum voltage : 0.72~1.2kV
- Over current strength : 40In/1sec.
- Frequency : 60Hz (Option 50Hz)
- Case : Poly carbonate (PC)

## ● Features

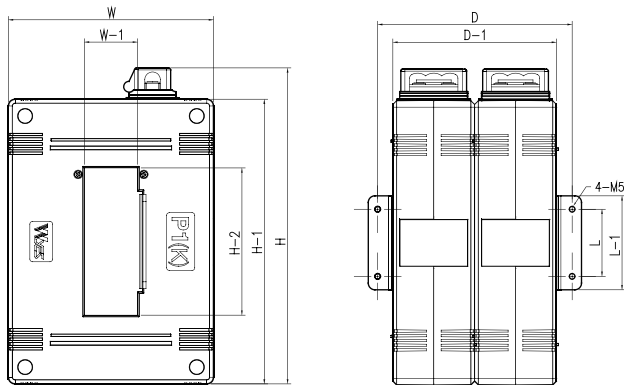
- Protect cover
- Easy to install panel mounting kit

## ● 2-Core Single Ratio Type

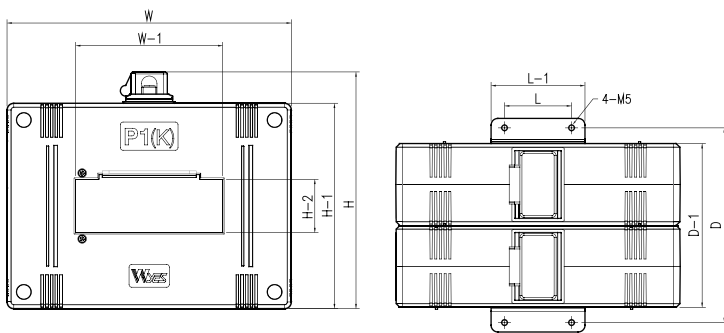
Model	Primary (A)	Secondary (A)	Burden (VA)	Class	weight (kg)	
WYCS-066WV WYCS-066WH	150~630	5 or 1	5/5VA	1,0/5P10	10	
	400~630			1,0/5P20	10	
	500~630		15/15VA	1,0/5P10	10	
WYCS-105WV WYCS-105WH	300~2000		5/5VA	1,0/5P10	1,0/5P20	10
	500~2000				1,0/5P10	10
	500~2000			15/15VA	1,0/5P20	10
	1500~2000			15/15VA	1,0/5P10	10
WYCS-107WV WYCS-107WH	150~1200		5/5VA	1,0/5P10	1,0/5P20	14
	200~1200				1,0/5P10	14
	300~1200			15/15VA	1,0/5P20	14
	630~1200			15/15VA	1,0/5P10	14
	750~1200			40/40VA	1,0/5P10	14
WYCS-116WV WYCS-116WH	200~3000	5/5VA	1,0/5P10	1,0/5P20	14	
	400~3000			1,0/5P10	14	
	600~3000		15/15VA	1,0/5P20	14	
	1200~3000		15/15VA	1,0/5P10	14	
	1500~3000		40/40VA	1,0/5P10	14	
WYCS-166WV WYCS-166WH	3000~5000	5/5VA	1,0/5P10	1,0/5P20	16	
	3000~5000			1,0/5P10	16	
	3000~5000		15/15VA	1,0/5P20	16	
	3000~5000		15/15VA	1,0/5P10	16	
WYCS-196WV WYCS-196WH	4000~6000	5/5VA	1,0/5P10	1,0/5P20	18	
	4000~6000			1,0/5P10	18	
	4000~6000		15/15VA	1,0/5P20	18	
	4000~6000		15/15VA	1,0/5P10	18	
	4000~6000		40/40VA	1,0/5P10	18	

\* Please inquire us in advance for the customized-specification ( PX/PX , Relay/Relay)

## ● Illustration & Drawing

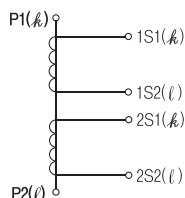


WV Type (Vertical Type)



WH Type (Horizontal Type)

## ● Connection Diagram



2 - Core Single ratio

## ● Dimension

Model	W	W-1	H	H-1	H-2	D	D-1	L	L-1
WYCS-066WV	117	15	179,5	156	61	145	122	20	45
WYCS-066WH	156	61	140,5	117	15	145	122	20	45
WYCS-105WV	148	34,7	227,3	204	101,7	133	110	50	70
WYCS-105WH	204	101,7	171,3	148	34,7	133	110	50	70
WYCS-107WV	148	35	227,5	204	102	171	148	50	70
WYCS-107WH	204	102	171,5	148	35	171	148	50	70
WYCS-116WV	153	40	235,5	212	110	145	122	50	70
WYCS-116WH	212	110	176,5	153	40	145	122	50	70
WYCS-166WV	176	65	283,5	260	160	145	122	50	70
WYCS-166WH	260	160	199,5	176	65	145	122	50	70
WYCS-196WV	199	90	311,5	288	190	145	122	50	70
WYCS-196WH	288	190	222,5	199	90	145	122	50	70

(mm)