

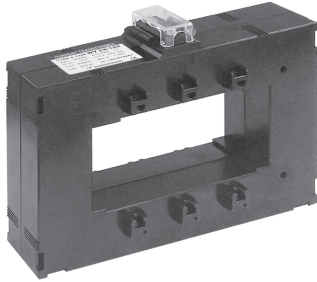
# PROTECTION RELAY TYPE (부스바관통형/보호계전기용) CURRENT TRANSFORMER

**WYES**  
계기용변성기

0.72~1.2kV (1200~6000A)



- Standard :KS C 1706, IEC 61869-2, JEC 1201, IEEE C 57.13



### ● Specifications

- Square type C,T(Busbar installing type)
- Maximum voltage : 0,72~1,2kV
- Over current strength : 40In/1sec.
- Frequency : 60Hz (Option 50Hz)
- Case : Poly carbonate (PC)

### ● Features

- Protect cover
- Easy to install panel mounting kit

HV/CT  
고압변류기

HV/VT-MOF  
고압변압기

LV/CT  
저압변류기

LV/VT  
저압변압기

RELAY  
보호계전기

ELD  
누전경보기

GFR  
지락계전기

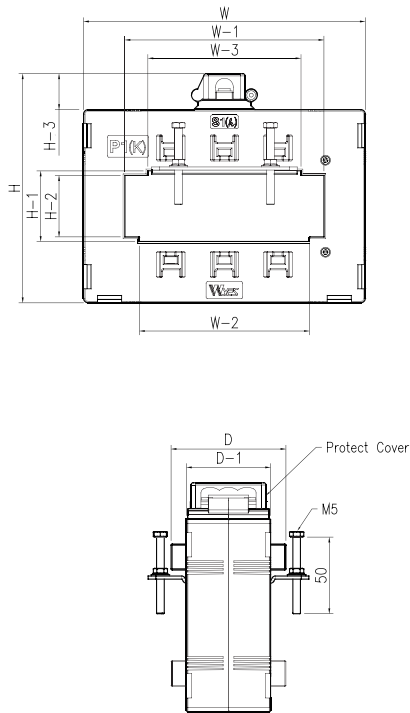
ZCT  
영성변류기

METER  
지시전기계기

SPD  
서지보호기

SPD  
서지보호기

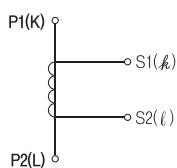
### ● Illustration & Drawing



### ● Single Ratio Type

| Model     | Primary (A) | Secondary (A) | Burden (VA) | Class (%) | Weight (kg) |                   |      |      |      |
|-----------|-------------|---------------|-------------|-----------|-------------|-------------------|------|------|------|
| WYCS-125R | 1200        | 5 or 1        | 15          | 5P10      | ≈3,2        |                   |      |      |      |
|           | 1500        |               |             |           |             |                   |      |      |      |
|           | 2000        |               |             |           |             |                   |      |      |      |
| WYCS-135R | 2500        |               |             |           |             | 10                | 5P10 |      |      |
|           | 3000        |               |             |           |             |                   |      |      |      |
|           | 3200        |               |             |           |             |                   |      |      |      |
| WYCS-137R | 3500        |               | 15          | 5P10      |             |                   |      | ≈3,6 |      |
|           | 4000        |               |             |           |             |                   |      |      |      |
|           | 2500        |               |             |           |             |                   |      |      |      |
|           | 3000        |               |             |           |             |                   |      |      |      |
| WYCS-165R | 3200        |               |             |           |             | 10                | 5P10 |      | ≈3,8 |
|           | 3500        |               |             |           |             |                   |      |      |      |
|           | 4000        |               |             |           |             |                   |      |      |      |
|           | 5000        | ≈4,1          |             |           |             |                   |      |      |      |
|           | 6000        |               |             |           |             |                   |      |      |      |
|           | 2500        |               | 15          | 5P10      | ≈4,0        |                   |      |      |      |
| 3000      |             |               |             |           |             |                   |      |      |      |
| 3200      |             |               |             |           |             |                   |      |      |      |
| WYCS-167R | 3500        | 15 (40)       |             |           |             | 5P10, 5P20 (5P10) | ≈4,5 |      |      |
|           | 4000        |               |             |           |             |                   |      |      |      |
|           | 5000        |               |             |           |             |                   |      |      |      |

### ● Connection Diagram



### ● Dimension

| Model     | W     | W-1   | W-2   | W-3   | H     | H-1  | H-2  | H-3  | D    | D-1  |
|-----------|-------|-------|-------|-------|-------|------|------|------|------|------|
| WYCS-125R | 184   | 130   | 111   | 100   | 149,5 | 46   | 40   | 23,5 | 74,8 | 54,8 |
| WYCS-135R | 185,4 | 134,6 | 109,6 | 98,6  | 177,2 | 59,6 | 53,6 | 23,5 | 75   | 55   |
| WYCS-137R | 185,4 | 134,6 | 109,6 | 98,6  | 177,2 | 59,6 | 53,6 | 22,8 | 94,4 | 74,4 |
| WYCS-165R | 256,4 | 158,6 | 134,6 | 108,6 | 199,2 | 80,6 | 74,6 | 23,8 | 74,5 | 54,5 |
| WYCS-167R | 256,4 | 158,6 | 134,6 | 108,6 | 199,2 | 80,6 | 74,6 | 23,8 | 94,4 | 74,4 |