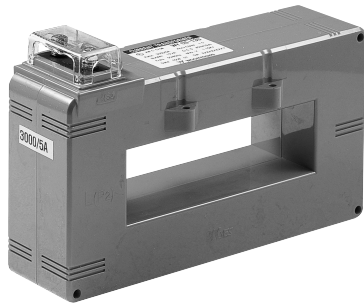


# METERING TYPE (부스바 관통형 / 계기용) CURRENT TRANSFORMER

0.72~1.2kV (100~5000A)



- Standard :KS C 1706, IEC 61869-2, JEC 1201, IEEE C 57.13



### ● Specifications

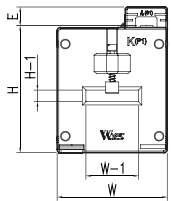
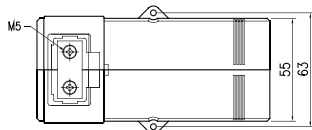
- Square type C,T(Busbar installing type)
- Maximum voltage : 0.72~1.2kV
- Over current strength : 40In/1sec.
- Frequency : 50Hz or 60Hz
- Case : Poly carbonate (PC)

### ● Features

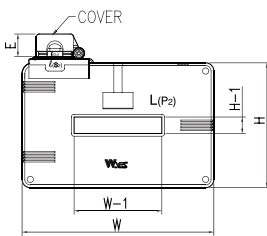
- Protect cover
- Easy to install panel mounting kit

### ● Illustration & Drawing

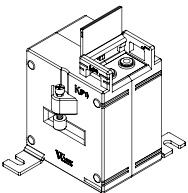
Protect Cover



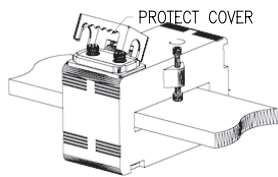
TYPE "A"



TYPE "B"



TYPE "A"



TYPE "B"

### ● Single Ratio Type

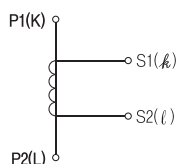
Model	Primary (A)	Secondary (A)	Burden (VA)	Class (%)	Weight (kg)
WYCS-32	100~300	5 or 1	5	1.0	≒0.5
	200~300		15		
WYCS-42	200~400		5		≒0.5
	400		15		
WYCS-45	200~750		5		≒0.5
	400~750		15		
WYCS-44	100~300		5		≒0.9
	200~300		15		
WYCS-65	250~600		5		≒0.7
	400~600		15		
	500~600		40		
WYCS-64	100~600		5		≒2.2
	150~600	15			
	200~600	40			
WYCS-85	500~1200	15	≒0.8		
	600~1200	40			
WYCS-104	800~2500	15 or 40	≒1.8		
WYCS-130	1200~3000	15 or 40	≒2.0		
WYCS-160	1200~5000	15 or 40	≒3.6		

### ● Dimension

Model	H-1	H	W-1	W	E	TYPE
WYCS-32	7	77	32	67	11	A
WYCS-42	7	77	42	67	11	A
WYCS-45	10	77	45	67	11	A
WYCS-44	11	60	44	97	18	B
WYCS-65	11	65	65	124	18	B
WYCS-64	12	91	64	140	21	B
WYCS-85	13	65	85	124	18	B
WYCS-104	30	102	104	170	21	B
WYCS-130	40	112	130	208	21	B
WYCS-160	65	153	160	246	21	B

(mm)

### ● Connection Diagram



Protect Cover