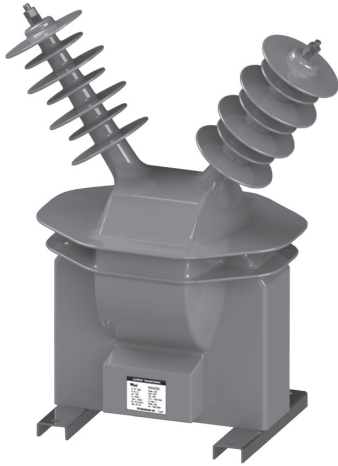


36kV (0~500VA)

## W36V2G



### EPOXY RESIN CAST VOLTAGE TRANSFORMERS for highest voltage of equipment up to 36kV

W36V2G 변압기는 최고회로전압 36kV급 절연성능으로 설계되어진 옥외용 에폭시물드 제품으로 그 이하 전압(24kV) 제품에 대해서는 동일한 치수(DIMENSION)를 가진다. 안정적인 절연능력 및 전기적 특성을 갖으며, 기계적 안전성과 유지보수의 용이성이 우수한 제품이다. 또한 단일 또는 다중 탭을 갖는 제품으로 설계 가능하다.

The W36V2G voltage transformer is an outdoor epoxy resin cast product designed in a maximum circuit voltage 36kV-class insulation performance, and has the same dimensions for the less voltage (24kV) product. This has a stable insulation capacity and electrical property, has excellent mechanical safety, and is easy to maintain. It is also possible to design products with single or multiple taps.

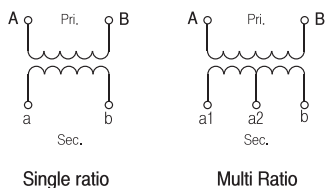
#### ● Feature

규격 Standard	IEC - IEEE - KS etc.
설계 및 적용 Design and Application	계기 및 보호용 Designed for measuring and/or protection
사용조건 Service condition	옥외 Valid for outdoor service
작업공정 Working process	진공주형방식 vacuum casting method

#### ● Electrical characteristic

ITEM	MODEL	W36V2G
Highest voltage for equipment (Um)		36kV
Rated power-frequency withstand voltage (60sec)		70(80)kV
Rated lightning impulse withstand voltage (1,2/50μs)full wave		170(200)kV
Rated frequency		50Hz, 60Hz, others on request
Rated Primary Voltage		33000v
Rated Secondary Voltage		110V, 220V
Rated Voltage factor		1,2Vn cont.
Insulation class (according to IEC 60085)		E
Standard		According to customer requirements
Temperature Category		According to customer requirements
Weight (approx.)		55kg

#### ● Connection Diagram

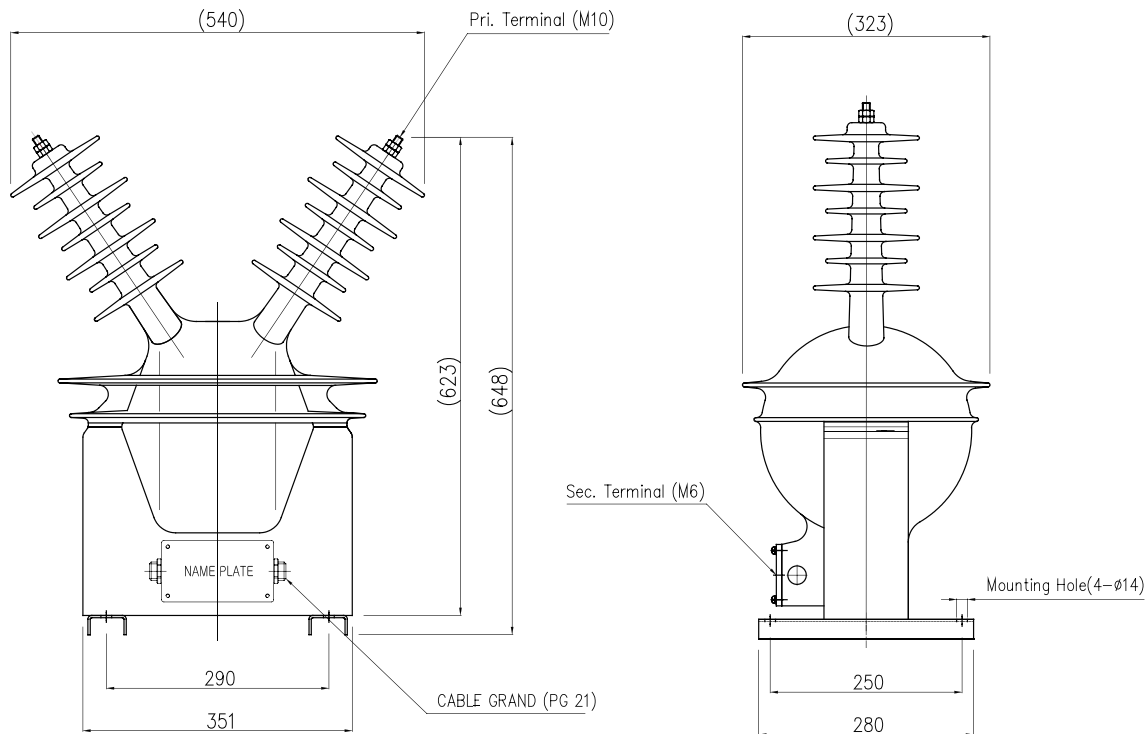


36kV (0~500VA)

● Specification

ITEM	Highest voltage for equipment (Um)	Voltage Ratio (V)	IEC 61869-3		
			Accuracy Class	Burden (VA)	Voltage Factor
W36V2G	36kV	33000/110V	1.0	200	1.2 Cont
		33000/220V	3.0	300 500	

● Dimension



- \* Creepage distance (Line to Line) : 1730mm
- \* Creepage distance (Line to Ground) : 1387mm

HV / CT 고압변류기

HV / VT : MOF 고압변압기

LV / CT 저압변류기

LV / VT 저압변압기

RELA Y 보호계전기

ELD 누전경보기

GF R 지락계전기

ZCT 영상변류기

METER 지시전계기

SPD 서지보호기

SHUNT 셉트