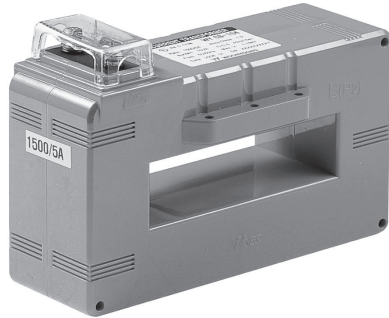


PROTECTION RELAY TYPE (부스바관통형/ 보호계전기용) CURRENT TRANSFORMER

0.72~1.2kV (150~5000A)



- Standard :KS C 1706, IEC 61869-2, JEC 1201, IEEE C 57.13



● Specifications

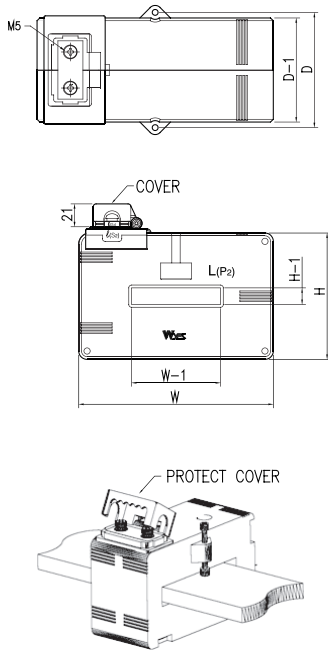
- Square type C,T(Panel installing type)
- Maximum voltage : 0.72~1.2kV
- Over current strength : 40In/1sec.
- Frequency : 60Hz (Option 50Hz)
- Case : Poly carbonate (PC)

● Features

- Protect cover
- Easy to install panel mounting kit

● Illustration & Drawing

Protect Cover



● Single Ratio Type

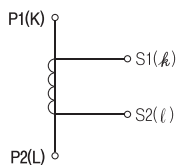
Model	Primary (A)	Secondary (A)	Class (%)	Burden (VA)	n >	Weight (kg)
WYCS-64R	150~800	5 or 1	5P(IEC)	5	10	≒2.5
	400~800			5	20	≒2.2
	400~800			15	10	≒2.2
WYCS-104R	150~2000			5	10	≒3.3
	400~2000			5	20	≒3.3
	400~2000			15	10	≒3.3
WYCS-130R	400~3000			5	10	≒2.3
	1200~3000			5	20	≒2.3
	1000~3000			15	10	≒2.3
WYCS-160R	200~5000	5	10	≒3.6		
	1000~5000	5	20	≒3.6		
	600~5000	15	10	≒3.6		
	2000~5000	15	20	≒3.6		

● Dimension

Model	H-1	H	W-1	W	D-1	D
WYCS-64R	12	91	64	140	75	83
WYCS-104R	25	97	104	170	75	83
WYCS-130R	40	112	130	208	55	63
WYCS-160R	65	153	160	246	55	63

(mm)

● Connection Diagram



HV / CT
고압변류기

HV / VT · MOF
고압변압기

LV / CT
저압변류기

LV / VT
저압변압기

RELA Y
보호계전기

ELD
누전경보기

GFR
지락계전기

ZCT
영상변류기

METER
지시전기계기

SPD
서지보호기

SHUNT
선타